

APP CRS	Rwy Idg	<b>7100</b>
<b>239°</b>	TDZE	<b>2552</b>
	Apt Elev	<b>2567</b>

# RNAV (GPS) Y RWY 23

PULLMAN/MOSCOW RGNL (PUW)

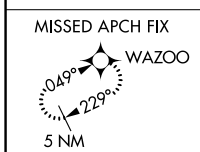
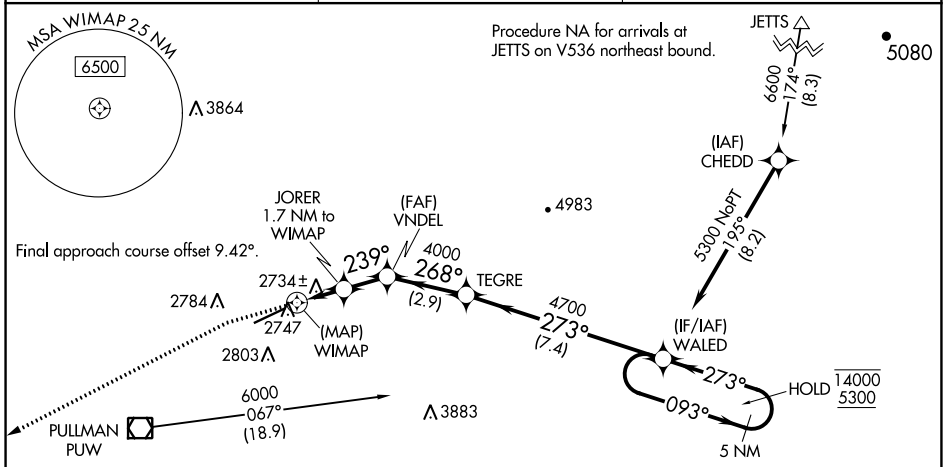
RNP APCH-GPS.

**▼** Rwy 23 helicopter visibility reduction below 1 SM NA. Straight-in

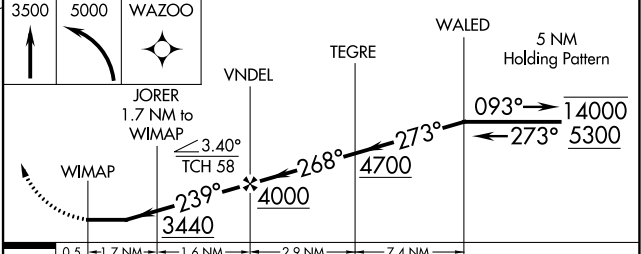
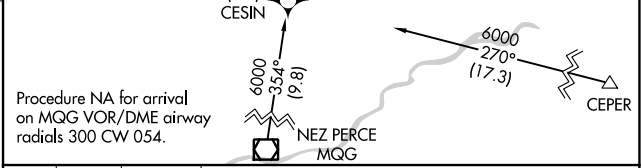
**▲** Rwy 23 at night, operational VGSI required, remain on or above VGSI glidepath until threshold.

MISSED APPROACH: Climb to 3500 then climbing left turn to 5000 direct WAZOO and hold.

ASOS <b>135.675</b>	SEATTLE CENTER <b>123.95 290.55</b>	UNICOM <b>122.8 (CTAF) 0</b>
------------------------	--	---------------------------------



ELEV 2567	<b>D</b>	TDZE 2552
-----------	----------	-----------



REIL Rwy 23 <b>0</b>				
HIRL Rwy 5-23 <b>0</b>				
CATEGORY	A	B	C	D
LNAV MDA	3000-1	448 (500-1)	3000-1½	448 (500-1½)

NW-1, 05 SEP 2024 to 03 OCT 2024

NW-1, 05 SEP 2024 to 03 OCT 2024