

LOC I-GGG	APP CRS	Rwy Idg	<b>9200</b>
<b>109.5</b>	<b>131°</b>	TDZE	<b>358</b>
		Apt Elev	<b>366</b>

# ILS or LOC RWY 13

EAST TEXAS RGNL (GGG)

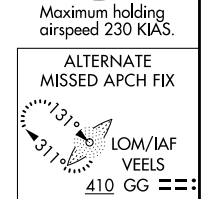
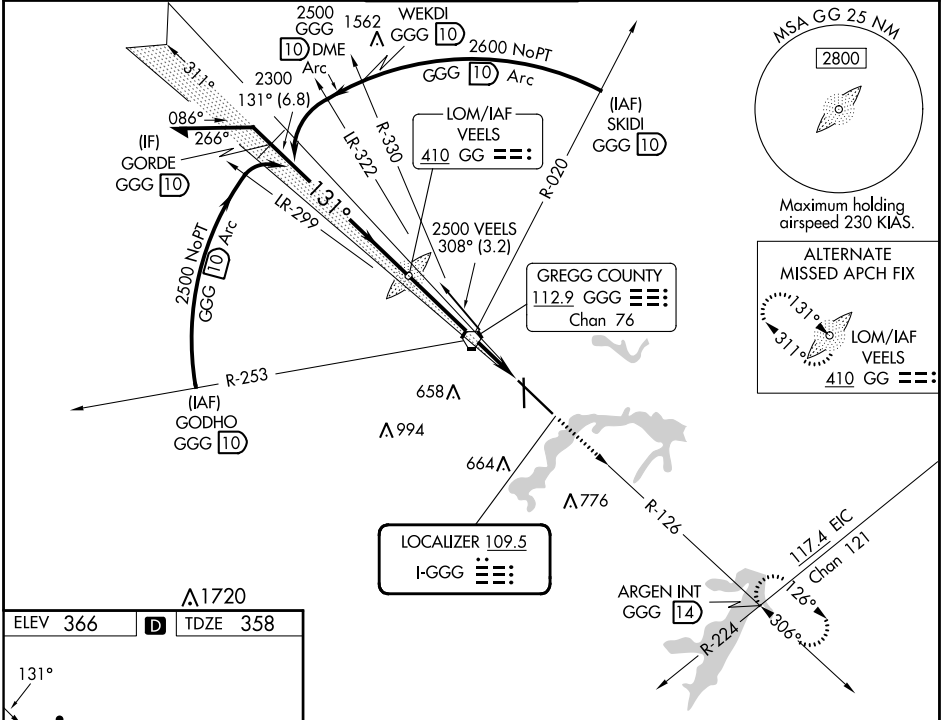
ADF or DME required for procedure entry.

▼ For inop ALS, increase S-ILS 13 Cat E visibility to RVR 4000, S-LOC 13 Cat C/D/E visibility to 1 3/8 SM. When local altimeter setting not received use Gilmer altimeter setting and ▲ increase DA 59 feet, all MDA 60 feet, increase LOC and Circling Cat C/D/E visibility 1/4 SM. For inop ALS when using Gilmer altimeter setting increase S-ILS 13 all Cats to RVR 4500, S-LOC 13 Cat C/D/E visibility to 1 3/8 SM. \* RVR 1800 authorized with the use of FD or AP or HUD to DA (NA when using Gilmer altimeter setting).

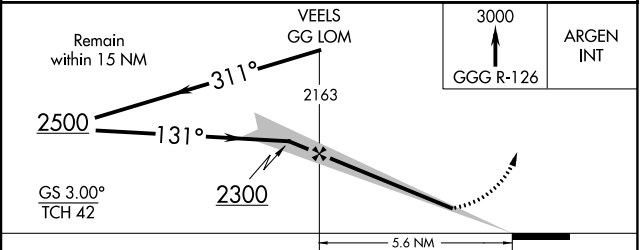
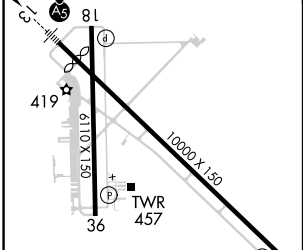


MISSED APPROACH:  
Climb to 3000 via GGG VORTAC R-126 to ARGEN Int/GGG 14 DME and hold.

ATIS <b>119.65</b>	LONGVIEW APP CON * <b>124.675 257.975</b>	EASTEX TOWER * <b>119.2 (CTAF) 0377.05</b>	GND CON <b>121.6</b>	UNICOM <b>122.95</b>
-----------------------	--	---	-------------------------	-------------------------



ELEV 366	D	TDZE 358
----------	---	----------



CATEGORY	A	B	C	D	E
S-ILS 13	*558/24				558/24 200 (200-1/2)
S-LOC 13	860/24	502 (500-1/2)	860/50	502 (500-1)	860/60 502 (500-1/4)
CIRCLING	860-1	494 (500-1)	980-1 3/4 614 (700-1 3/4)	1080-2 1/4 714 (800-2 1/4)	1080-2 1/2 714 (800-2 1/2)

SC-2, 05 SEP 2024 to 03 OCT 2024

SC-2, 05 SEP 2024 to 03 OCT 2024