

WAAS CH <b>86527</b> <b>W14A</b>	APP CRS <b>140°</b>	Rwy Idg TDZE Apt Elev	<b>4000</b> <b>996</b> <b>1001</b>
--	------------------------	-----------------------------	--

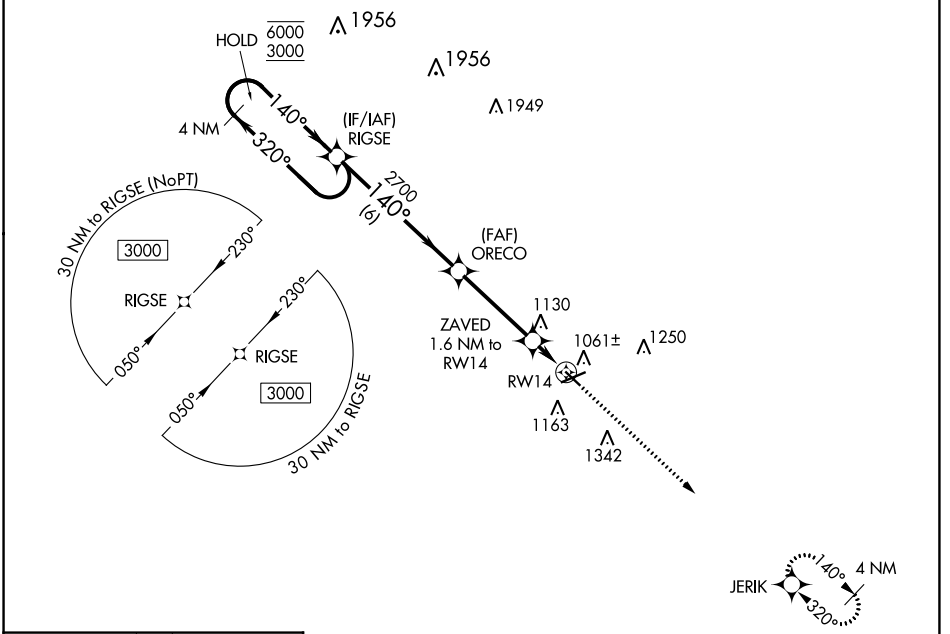
**RNAV (GPS) RWY 14**  
JACKSON COUNTY/REYNOLDS FLD (JXN)

RNP APCH - GPS.

**▼** Rwy 14 helicopter visibility reduction below 3/4 SM NA. For uncompensated Baro-VNAV systems, LNAV/VNAV NA below -23°C or above 54°C.

MISSED APPROACH: Climb to 3000 direct JERIK and hold.

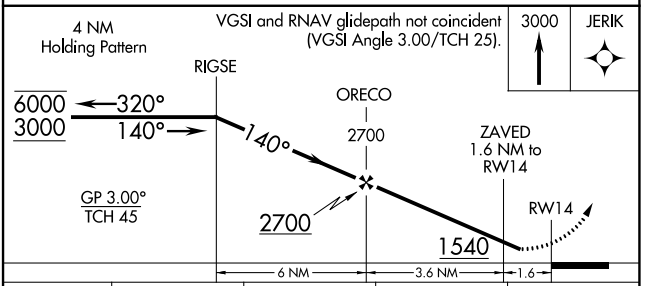
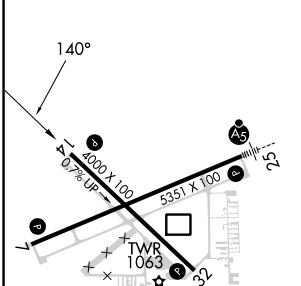
ATIS <b>125.725</b>	GREAT LAKES APP CON * <b>127.3 335.575</b>	JACKSON TOWER * <b>128.475(CTAF) 257.8</b>	GND CON <b>121.9</b>	CLNC DEL <b>121.9</b>	UNICOM <b>122.95</b>
------------------------	---	---	-------------------------	--------------------------	-------------------------



EC-1, 05 SEP 2024 to 03 OCT 2024

EC-1, 05 SEP 2024 to 03 OCT 2024

ELEV 1001	TDZE 996
-----------	----------



CATEGORY	A	B	C	D
LPV DA	1345-1 349 (400-1)			
LNAV/VNAV DA	1463-1 3/8 467 (500-1 3/8)			
LNAV MDA	1380-1 384 (400-1)	1380-1 3/8 384 (400-1 3/8)		
<input checked="" type="checkbox"/> CIRCLING	1480-1 479 (500-1)	1660-1 3/4 659 (700-1 3/4)	1660-2 659 (700-2)	

HIRL Rwy 7-25 **1**  
MIRL Rwy 14-32 **1**  
REL Rwy 7 and 32 **1**