

WAAS CH 65708 W02A	APP CRS 018°	Rwy Idg TDZE 488 Apt Elev 488	6201
--	------------------------	---	-------------


RNAV (GPS) RWY 2

DILLANT/HOPKINS (EEN)

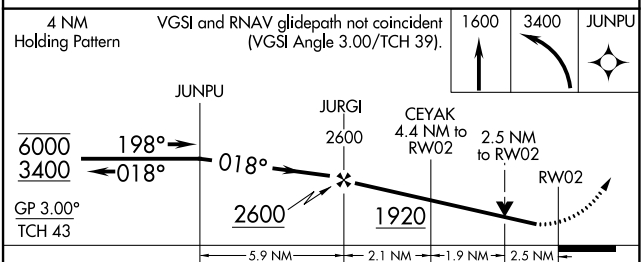
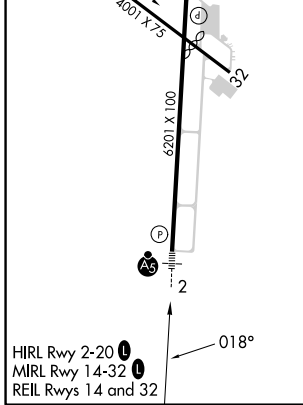
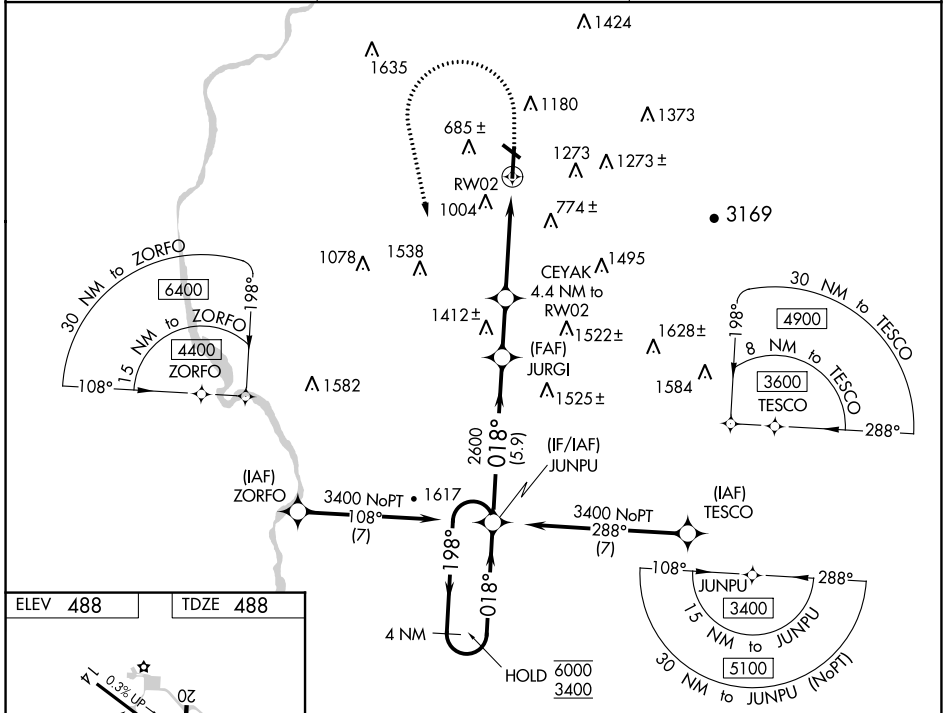
RNP APCH - GPS.

⚠ Circling Rwy 32 NA at night. Rwy 2 helicopter visibility reduction below 3/4 SM NA. Inop table does not apply to LPV all Cats and LNAV Cat A. For inop ALS, increase LNAV Cat B visibility to 1 1/4 SM.

⚠ -21°C

MALSR  MISSED APPROACH: Climb to 1600 then climbing left turn to 3400 direct JUNPU and hold.

AWOS-3PT 119.025	BOSTON CENTER 123.75 338.2	UNICOM 123.0 (CTAF) 0
----------------------------	--------------------------------------	---------------------------------



CATEGORY	A	B	C	D
LPV DA	843-1 355 (400-1)			
LNAV MDA	1340-1	852 (900-1)	1340-2	852 (900-2)
C CIRCLING	1380-1 1/4 892 (900-1 1/4)	1480-1 1/2 992 (1000-1 1/2)	1760-3 1272 (1300-3)	1980-3 1492 (1500-3)

NE-1, 05 SEP 2024 to 03 OCT 2024

NE-1, 05 SEP 2024 to 03 OCT 2024