

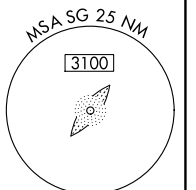
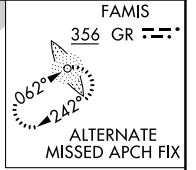
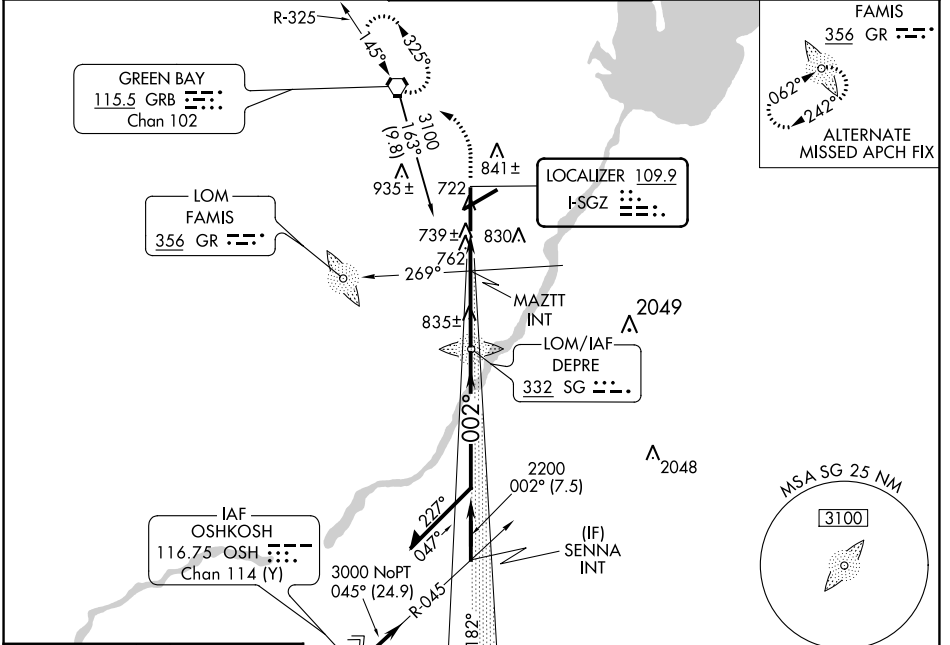
LOC I-SGZ 109.9	APP CRS 002°	Rwy Idg 8201	TDZE 684
		Apt Elev 695	

ILS or LOC RWY 36

GREEN BAY/AUSTIN STRAUBEL INTL (GRB)

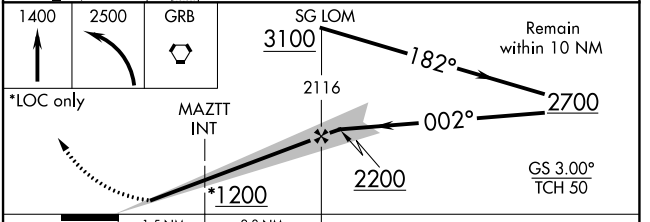
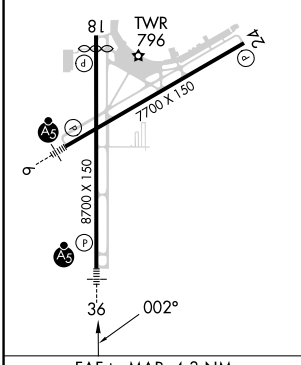
For inop ALS, increase S-LOC 36 Cats C/D visibility to 1 3/8 SM. **RVR 1800 authorized with the use of FD or AP or HUD to DA.	MISSED APPROACH: Climb to 1400 then climbing left turn to 2500 direct GRB VORTAC and hold.
--	--

ATIS 124.1	GREEN BAY APP CON * 119.4 338.2	GREEN BAY TOWER * 118.7 (CTAF) 257.8	GND CON 121.9	CLNC DEL 121.75
----------------------	---	--	-------------------------	---------------------------



ELEV 695	D TDZE 684
----------	-------------------

REIL Rwy 18
HIRL Rwys 6-24 and 18-36



CATEGORY	A	B	C	D
S-ILS 36	**884/24 200 (200-1/2)			
S-LOC 36	1200/24	516 (600-1/2)	1200/55	516 (600-1)
C CIRCLING	1200-1	505 (600-1)	1300-1 3/4 605 (700-1 3/4)	1300-2 605 (700-2)
MAZTT FIX MINIMUMS				
S-LOC 36	1020/24	336 (400-1/2)	1020/26	336 (400-1/2)
C CIRCLING	1200-1	505 (600-1)	1200-1 1/2 505 (600-1 1/2)	1260-2 565 (600-2)

FAF to MAP 4.3 NM					
Knots	60	90	120	150	180
Min:Sec	4:18	2:52	2:09	1:43	1:26

EC-3, 05 SEP 2024 to 03 OCT 2024

EC-3, 05 SEP 2024 to 03 OCT 2024