

WAAS CH <b>99515</b> <b>W24A</b>	APP CRS <b>242°</b>	Rwy Idg TDZE Apt Elev	<b>7699</b> <b>681</b> <b>695</b>
--	------------------------	-----------------------------	---

# RNAV (GPS) RWY 24

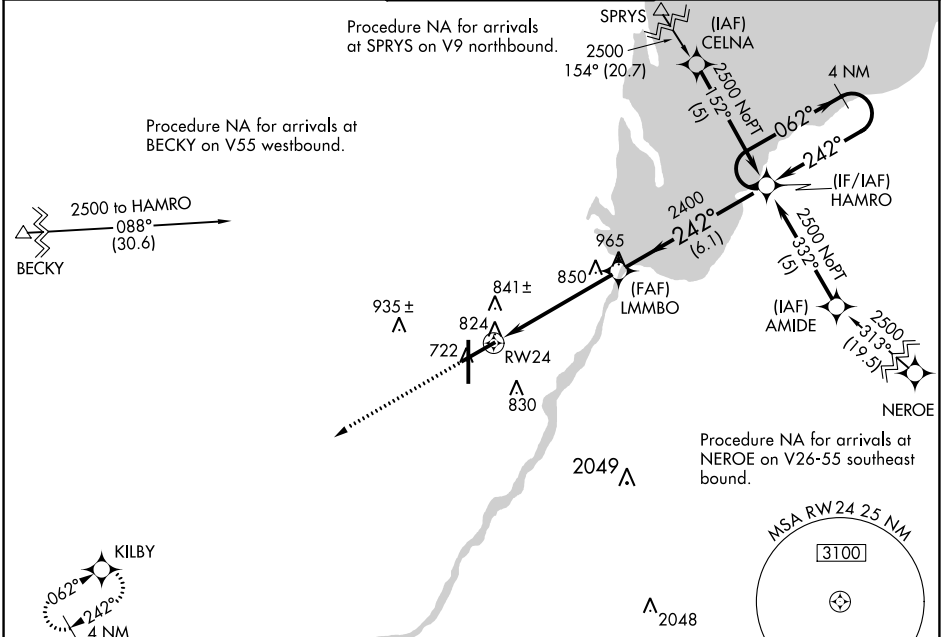
GREEN BAY/AUSTIN STRAUBEL INTL (G.R.B)

RNP APCH-GPS.

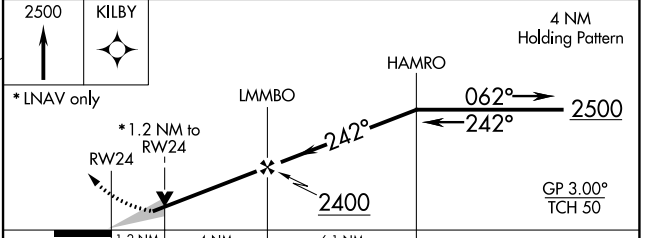
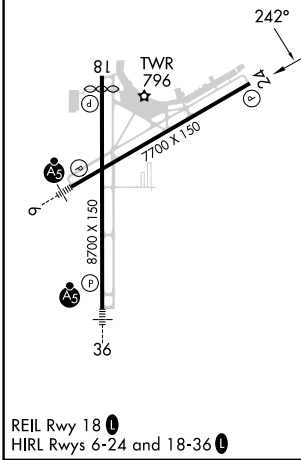
ASR For uncompensated Baro-VNAV systems, LNAV/VNAV NA below -16° C or above 54°C.

MISSED APPROACH: Climb to 2500 direct KILBY and hold.

ATIS <b>124.1</b>	GREEN BAY APP CON * <b>119.4 338.2</b>	GREEN BAY TOWER * <b>118.7 (CTAF) 257.8</b>	GND CON <b>121.9</b>	CLNC DEL <b>121.75</b>
----------------------	---	--	-------------------------	---------------------------



ELEV 695	<b>D</b>	TDZE 681
----------	----------	----------



CATEGORY	A	B	C	D
LPV DA	970-1		289 (300-1)	
LNAV/VNAV DA	1143-1½		462 (500-1½)	
LNAV MDA	1100-1	419 (500-1)	1100-1¼	419 (500-1¼)
<b>C</b> CIRCLING	1200-1	505 (600-1)	1300-1¾ 605 (700-1¾)	1300-2 605 (700-2)

EC-3, 05 SEP 2024 to 03 OCT 2024

EC-3, 05 SEP 2024 to 03 OCT 2024