

LOC/DME I-HOT <b>111.5</b> Chan <b>52</b>	APP CRS <b>053°</b>	Rwy Idg <b>6595</b> TDZE <b>516</b> Apt Elev <b>540</b>
---	------------------------	---

# ILS or LOC RWY 5

MEML FLD (HOT)

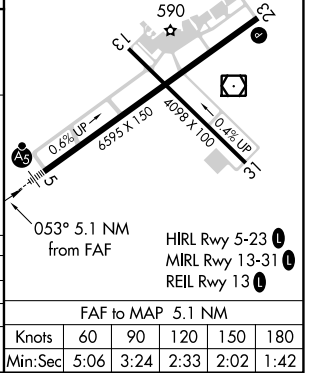
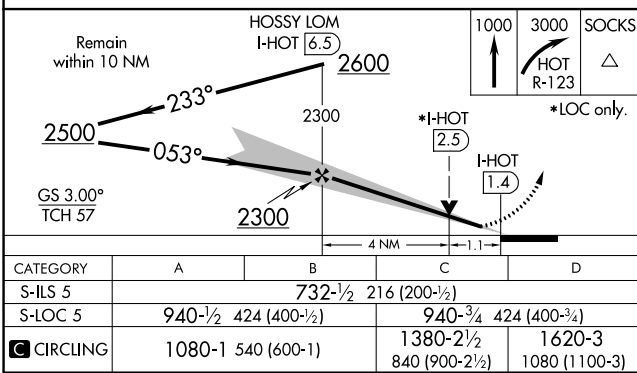
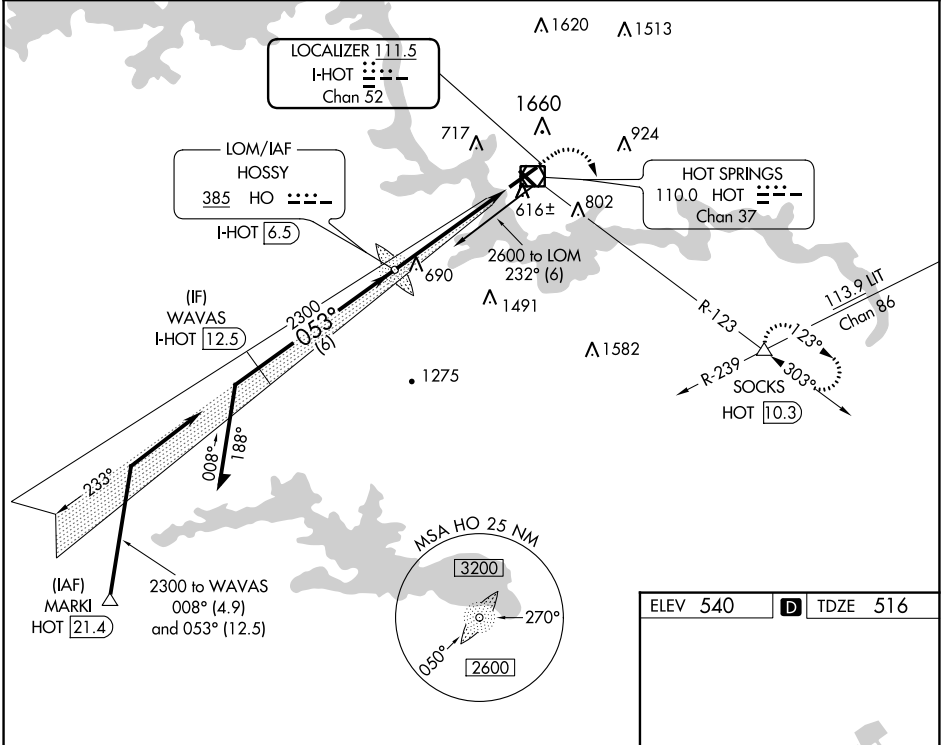
ADF or DME required.

**NA** Circling NA northwest of Rwy 5-23.  
Use I-HOT DME when on localizer course.

MALS R

MISSED APPROACH: Climb to 1000 then climbing right turn to 3000 on HOT VOR/DME R-123 to SOCKS INT/HOT 10.3 DME and hold.

ASOS <b>119.925</b>	MEMPHIS CENTER <b>128.475 377.15</b>	UNICOM <b>123.0 (CTAF)</b>
------------------------	---	-------------------------------



CATEGORY	A	B	C	D
	732-1/2		216 (200-1/2)	
S-ILS 5				
S-LOC 5	940-1/2	424 (400-1/2)	940-3/4	424 (400-3/4)
CIRCLING	1080-1 540 (600-1)		1380-2 1/2	1620-3
			840 (900-2 1/2)	1080 (1100-3)

ELEV 540	TDZE 516				
FAF to MAP 5.1 NM					
Knots	60	90	120	150	180
Min:Sec	5:06	3:24	2:33	2:02	1:42

SC-1, 05 SEP 2024 to 03 OCT 2024

SC-1, 05 SEP 2024 to 03 OCT 2024