

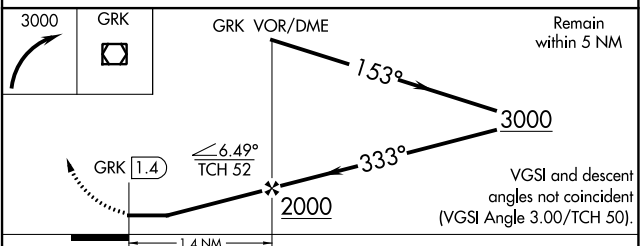
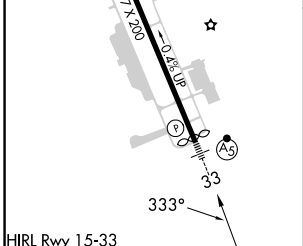
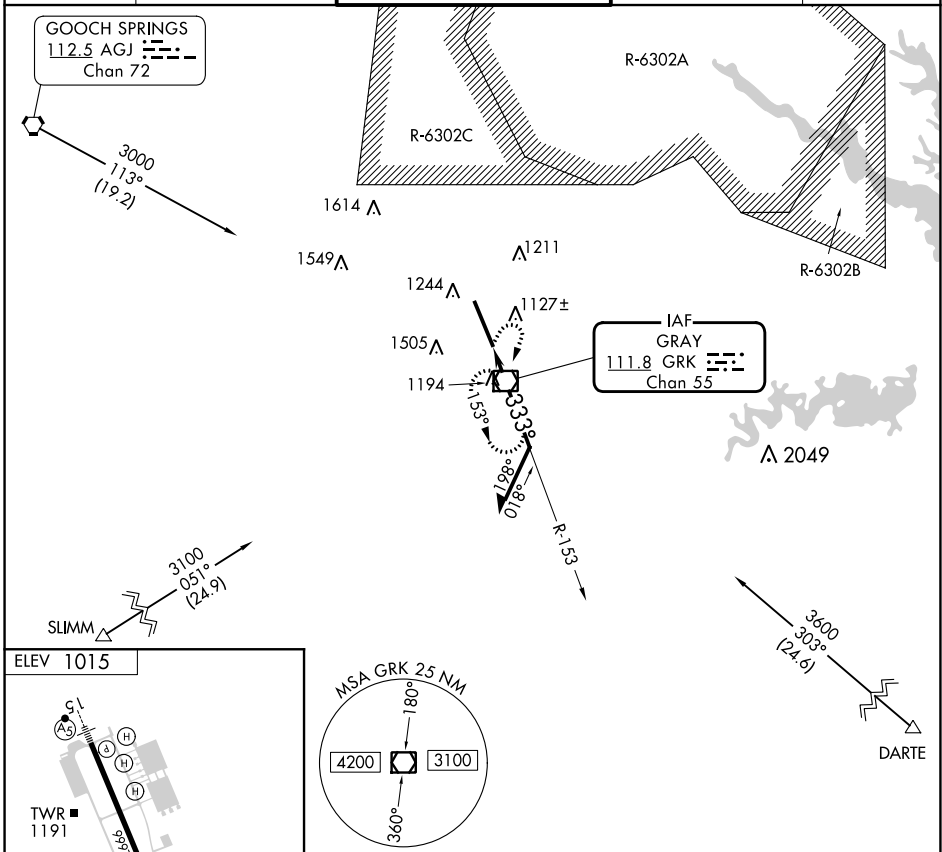
VOR/DME GRK <b>111.8</b> Chan <b>55</b>	APP CRS <b>333°</b>	Rwy Idg TDZE Apt Elev	<b>9803</b> <b>N/A</b> <b>1015</b>
---	------------------------	-----------------------------	--

# COPTER VOR RWY 33

ROBERT GRAY AAF (GRK)

		MISSED APPROACH: Climbing right turn to 3000 direct GRK VOR/DME and hold.
--	--	---

ATIS <b>124.9</b>	GRAY APP CON <b>120.075 323.15</b>	GRAY TOWER <b>120.75 (CTAF) 285.5</b>	GND CON <b>121.8 279.5</b>	CLNC DEL <b>126.2 251.1</b>
----------------------	---------------------------------------	--	-------------------------------	--------------------------------



FAF to MAP 1.4 NM					CATEGORY	COPTER	
Knots	45	60	75	90	H-33	1460-¼ 465 (500-¼)	
Min:Sec	1:52	1:24	1:07	0:56			

SC-3, 05 SEP 2024 to 03 OCT 2024

SC-3, 05 SEP 2024 to 03 OCT 2024