

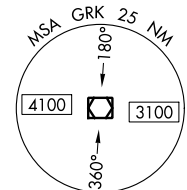
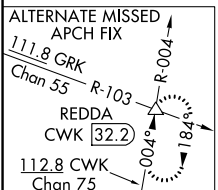
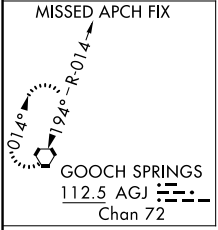
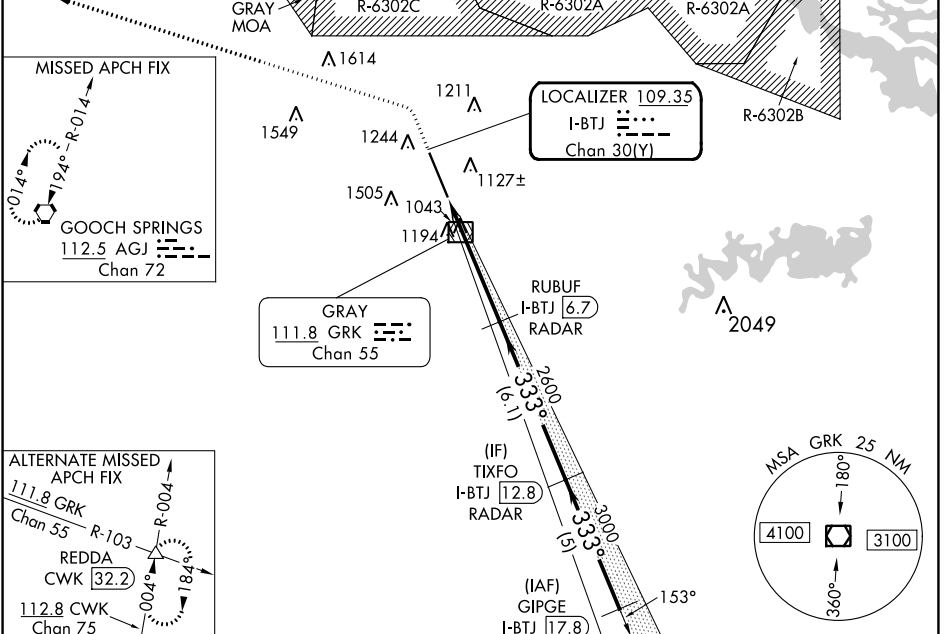
LOC/DME I-BTJ 109.35 Chan 30 (Y)	APP CRS 333°	Rwy Idg TDZE Apt Elev 9803 995 1015
---	------------------------	---

ILS or LOC RWY 33

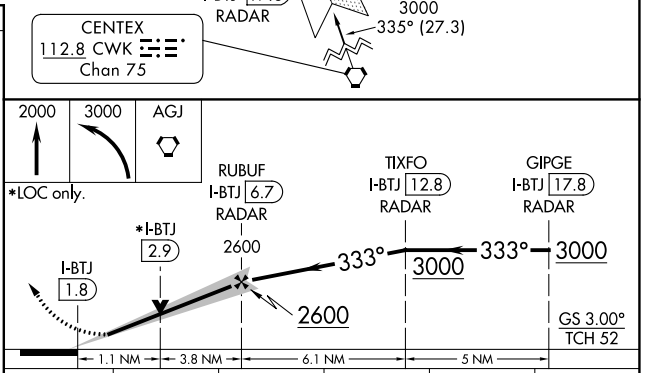
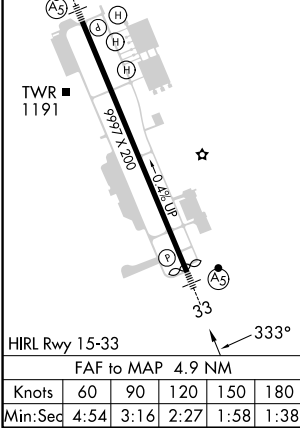
ROBERT GRAY AAF (GRK)

DME or RADAR required.	MALSR 	MISSED APPROACH: Climb to 2000 then climbing left turn to 3000 direct AGJ VORTAC and hold.
ASR/PAR 	Circling NA west of Rwy 15-33. For inop ALS, increase S-ILS 33 Cat E visibility to 3/4 SM and S-LOC 33 Cat C/D/E visibility to 1 SM.	

ATIS 124.9	GRAY APP CON 120.075 323.15	GRAY TOWER 120.75 (CTAF) 285.5	GND CON 121.8 279.5	CLNC DEL 126.2 251.1
----------------------	---------------------------------------	--	-------------------------------	--------------------------------



ELEV 1015	TDZE 995
-----------	----------



CATEGORY	A	B	C	D	E
S-ILS 33	1195-1/2 200 (200-1/2)				
S-LOC 33	1360-1/2	365 (400-1/2)	1360-3/4	365 (400-3/4)	
CIRCLING	1540-1	525 (600-1)	1560-1/2 545 (600-1/2)	1620-2 605 (700-2)	1740-2-1/2 725 (800-2-1/2)

SC-3, 05 SEP 2024 to 03 OCT 2024

SC-3, 05 SEP 2024 to 03 OCT 2024