

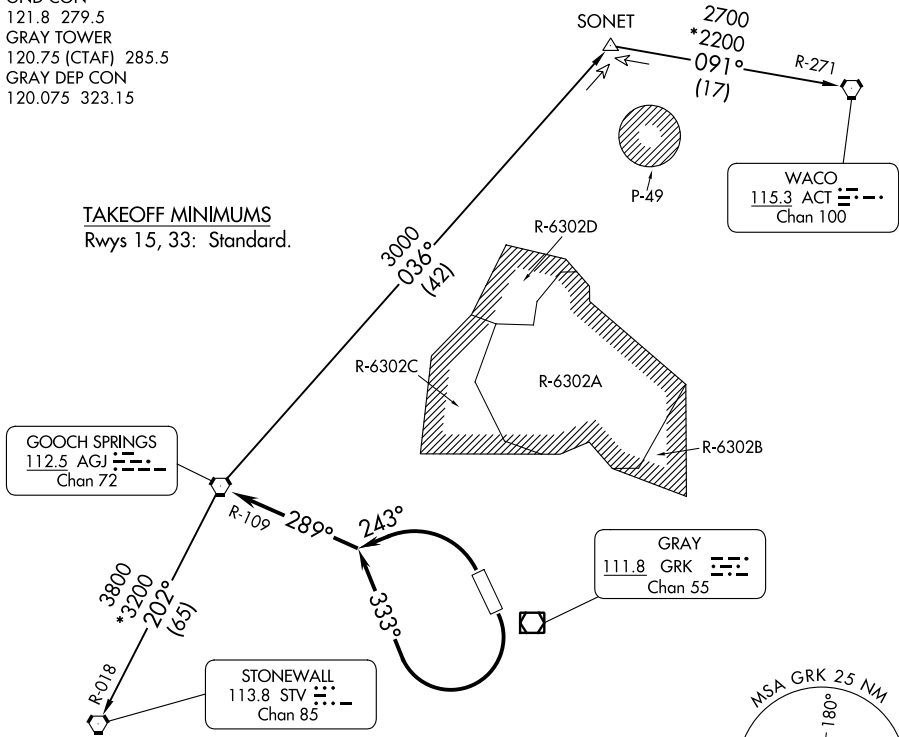
LAMPS EIGHT DEPARTURE

ATIS
124.9
CLNC DEL
126.2 251.1
GND CON
121.8 279.5
GRAY TOWER
120.75 (CTAF) 285.5
GRAY DEP CON
120.075 323.15

RADAR required.

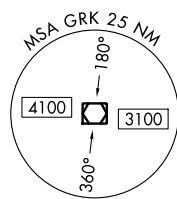
**TOP ALTITUDE:
ASSIGNED BY ATC**

TAKEOFF MINIMUMS
Rwys 15, 33: Standard.



NOTE: WACO TRANSITION for aircraft inbound to terminal area airports.

NOTE: Chart not to scale.



DEPARTURE ROUTE DESCRIPTION

TAKEOFF RUNWAY 15: Climbing right turn heading 333° (to assigned altitude) to intercept and proceed on AGJ R-109. Thence . . .

TAKEOFF RUNWAY 33: Climbing left turn heading 243° (to assigned altitude) to intercept and proceed on AGJ R-109. Thence . . .

. . . on (transition) or (assigned route). Maintain ATC assigned altitude.

STONEWALL TRANSITION (LAMPS8.STV): From over AGJ VORTAC on AGJ R-202 and STV R-018 to STV VORTAC.

WACO TRANSITION (LAMPS8.ACT): From over AGJ VORTAC on AGJ R-036 to SONET INT, then on ACT R-271 to ACT VORTAC.

LAMPS EIGHT DEPARTURE

(LAMPS8.AGJ) 30NOV23

FORT CAVAZOS (KILLEEN), TEXAS
ROBERT GRAY AAF (GRK)

SC-3, 05 SEP 2024 to 03 OCT 2024

SC-3, 05 SEP 2024 to 03 OCT 2024