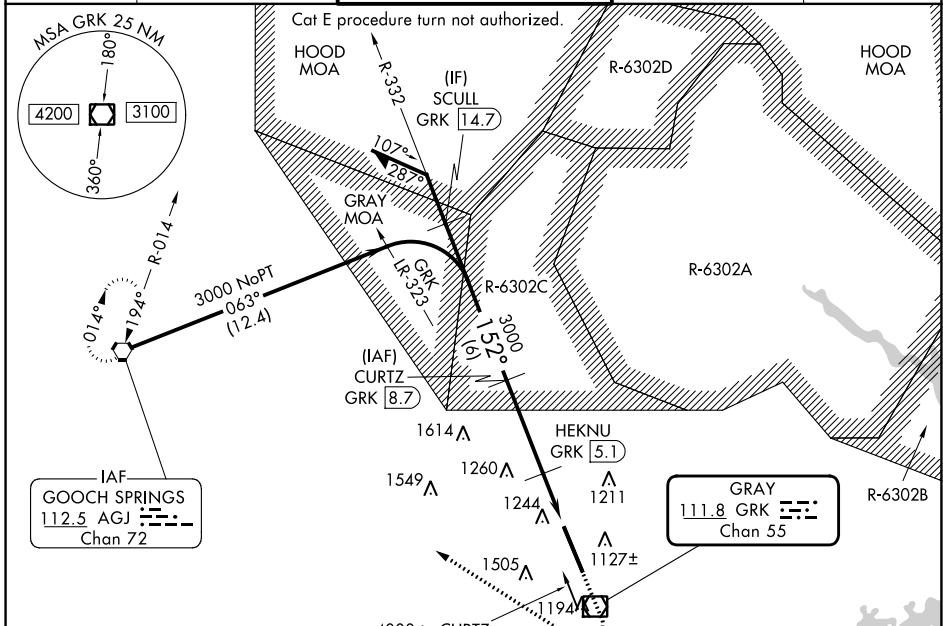


VOR/DME GRK <b>111.8</b> Chan <b>55</b>	APP CRS <b>152°</b>	Rwy Idg <b>9997</b> TDZE <b>1015</b> Apt Elev <b>1015</b>
---	------------------------	---

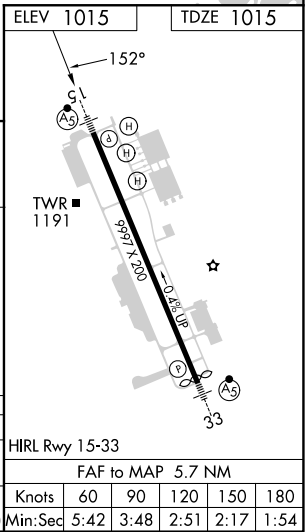
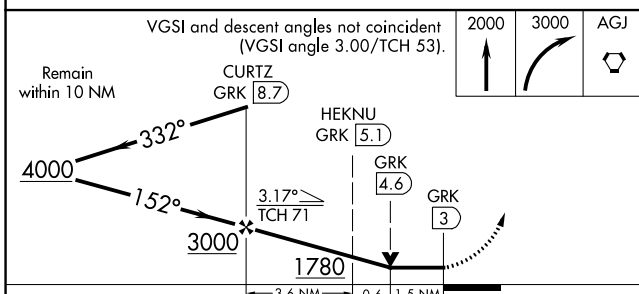
# VOR RWY 15

ROBERT GRAY AAF (GRK)

DME required.		MALSR 	MISSED APPROACH: Climb to 2000 then climbing right turn to 3000 direct AGJ VORTAC and hold.			
NA ASR/PAR Circling NA west of Rws 15 and 33. For inop ALS, increase S-15 Cat E visibility to 1% SM.		ATIS <b>124.9</b>	GRAY APP CON <b>120.075 323.15</b>	GRAY TOWER <b>120.75(CTAF) 285.5</b>	GND CON <b>121.8 279.5</b>	CLNC DEL <b>126.2 251.1</b>



A1616 $\pm$



CATEGORY	A	B	C	D	E
S-15	1560/24	545 (600-1/2)	1560/60	545 (600-1 1/4)	
CIRCLING	1560-1	545 (600-1)	1560-1 5/8 545 (600-1 5/8)	1620-2 605 (700-2)	1740-2 1/2 725 (800-2 1/2)

SC-3, 05 SEP 2024 to 03 OCT 2024

SC-3, 05 SEP 2024 to 03 OCT 2024