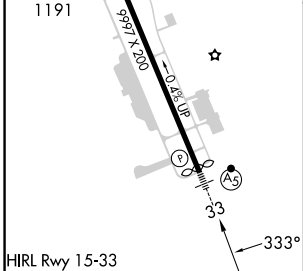
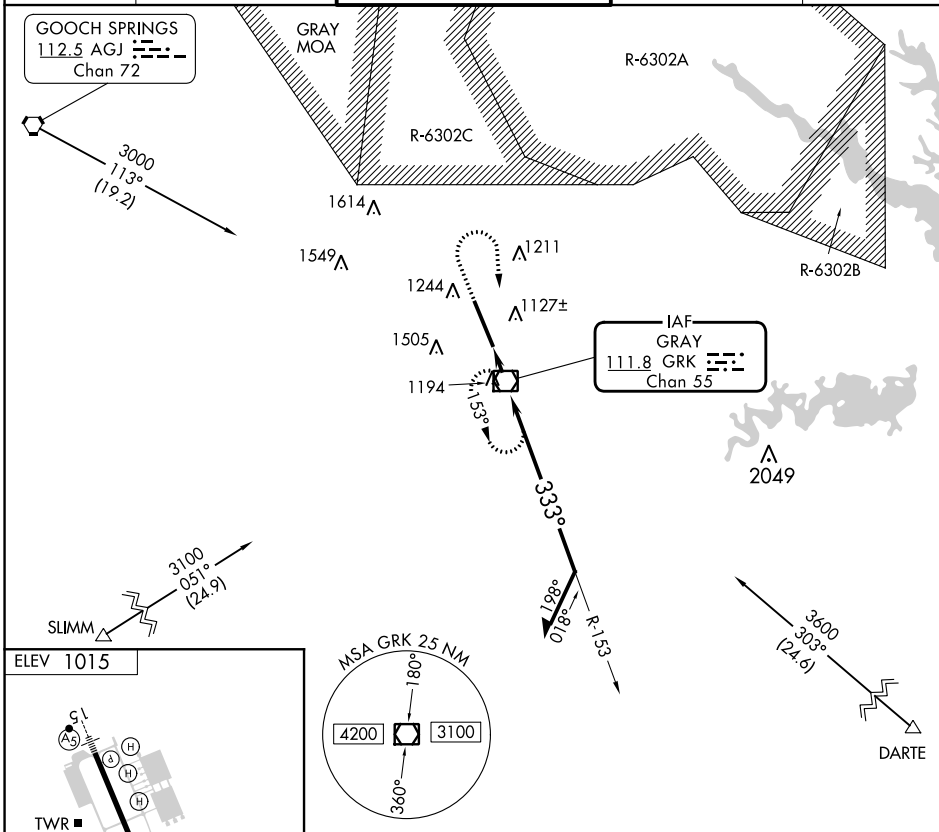


VOR/DME GRK 111.8 Chan 55	APP CRS 333°	Rwy Idg TDZE Apt Elev	N/A N/A 1015
---	------------------------	-----------------------------	---

VOR-A
ROBERT GRAY AAF (GRK)

NA Circling NA W of Rwy 15-33.
ASR/PAR MISSED APPROACH: Climb to 2000 then climbing right turn to 3000 direct GRK VOR/DME and hold.

ATIS 124.9	GRAY APP CON 120.075 323.15	GRAY TOWER 120.75(CTAF) 285.5	GND CON 121.8 279.5	CLNC DEL 126.2 251.1
----------------------	---------------------------------------	---	-------------------------------	--------------------------------



2000	3000	GRK	GRK VOR/DME	Remain within 10 NM
↑	↷	☐		
GRK 1.4			153°	3000
2100			333°	
1.4 NM				

FAF to MAP 1.4 NM				
Category	A	B	C	D
<input checked="" type="checkbox"/> CIRCLING	1540-1	525 (600-1)	1560-1½ 545 (600-1½)	1620-2 605 (700-2)

SC-3, 05 SEP 2024 to 03 OCT 2024

SC-3, 05 SEP 2024 to 03 OCT 2024