

WAAS CH 42836 W31A	APP CRS 309°	Rwy Idg TDZE Apt Elev	6005 464 474
--	------------------------	-----------------------------	---

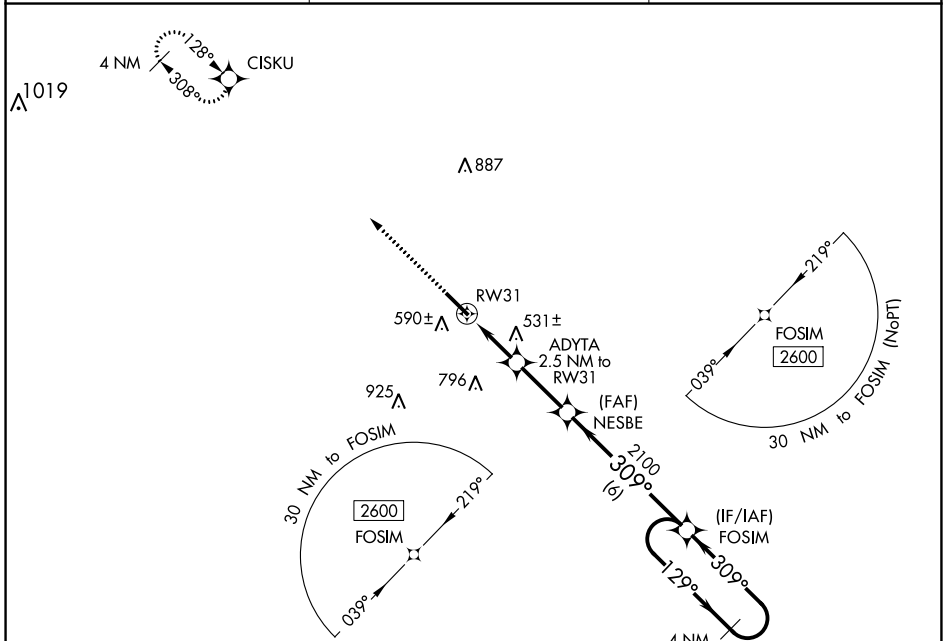
RNAV (GPS) RWY 31

COTULLA-LA SALLE COUNTY (COT)

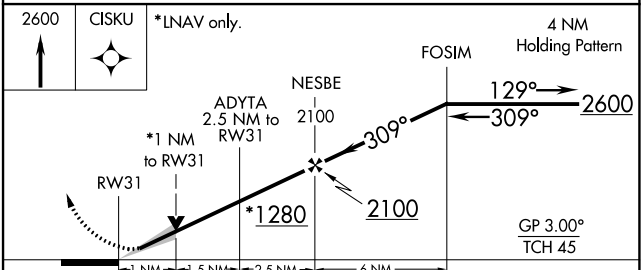
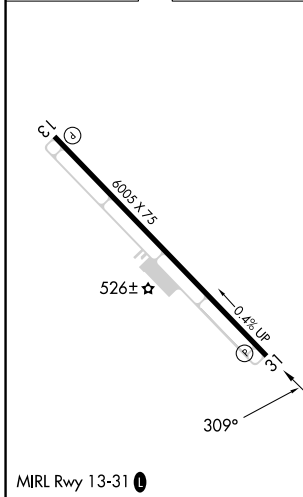
▽ For uncompensated Baro-VNAV systems, LNAV/VNAV NA below -5°C (23°F) or above 54°C (130°F). DME/DME RNP-0.3 NA.

MISSED APPROACH: Climb to 2600 direct CISKU and hold.

ASOS 118.325	HOUSTON CENTER 134.6 322.5	UNICOM 122.7 (CTAF) 0
------------------------	--------------------------------------	---------------------------------



ELEV 474	TDZE 464
-----------------	-----------------



CATEGORY	A	B	C	D
LPV DA		714-3/4	250 (300-3/4)	NA
LNAV/VNAV DA		714-3/4	250 (300-3/4)	NA
LNAV MDA		800-1	336 (400-1)	NA
C CIRCLING	920-1 446 (500-1)	940-1 466 (500-1)	1120-1 3/4 646 (700-1 3/4)	NA