

APP CRS	Rwy Idg	<b>7345</b>
<b>144°</b>	TDZE	<b>119</b>
	Apt Elev	<b>153</b>

# RNAV (GPS) RWY 14

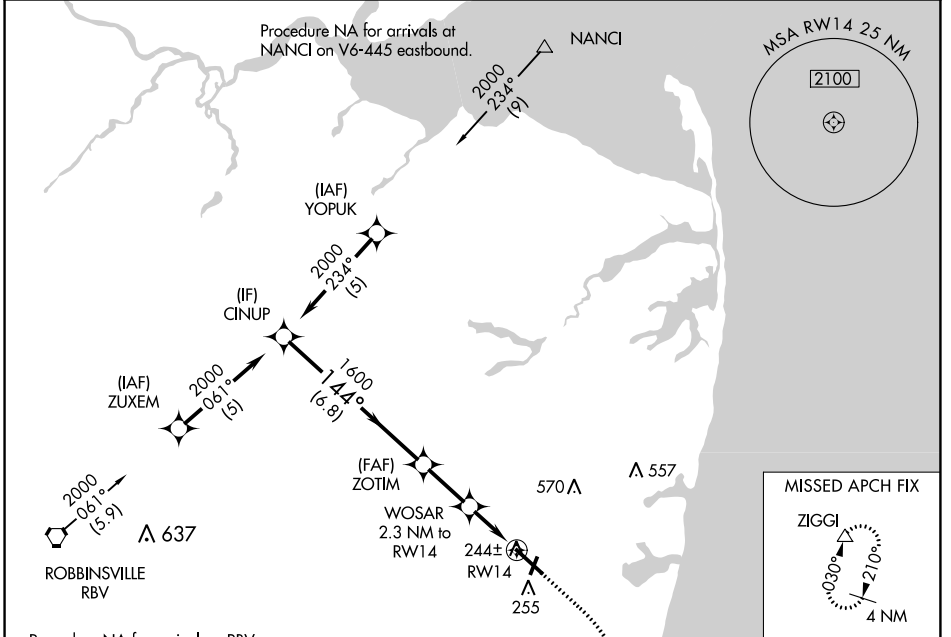
MONMOUTH EXEC (BLM)

**RNP APCH.**

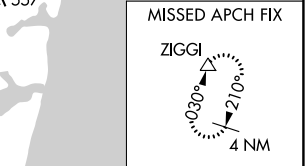
⚠ Circling Rwy 3, 21 NA at night. Rwy 14 helicopter visibility reduction below 3/4 SM NA. VDP NA when using Lakehurst altimeter setting. When local altimeter setting not received, use Lakehurst altimeter setting: increase all MDA 40 feet and LNAV Cats C/D visibility 1/8 SM and Circling Cat C/D visibility 1/4 SM.

MISSED APPROACH: Climb to 600 then climbing right turn to 2000 direct ZIGGI and hold.

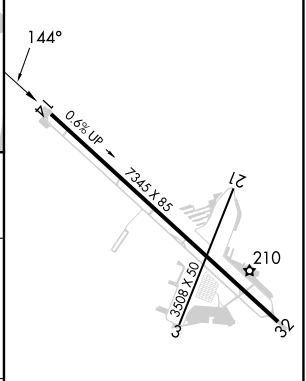
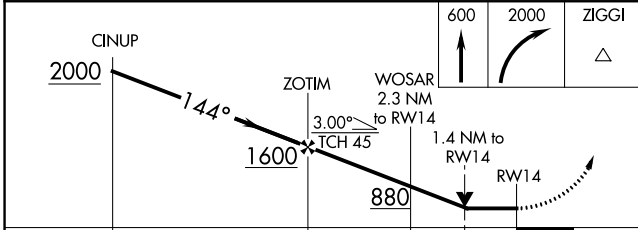
AWOS-3PT <b>121.625</b>	MC GUIRE APP CON <b>126.475 363.8</b>	CLNC DEL <b>126.15</b>	UNICOM <b>123.0</b> (CTAF)
----------------------------	--	---------------------------	-------------------------------



Procedure NA for arrival on RBV  
VORTAC airway radials 001 CW 122.



ELEV 153	TDZE 119
----------	----------



	6.8 NM		2.2 NM		0.9		1.4	
CATEGORY	A		B		C		D	
LNAV MDA	500-1		381 (400-1)		500-1 1/8		381 (400-1 1/8)	
CIRCLING	560-1		620-1		880-2		880-2 1/4	
	407 (500-1)		467 (500-1)		727 (800-2)		727 (800-2 1/4)	

MIRL Rwy 14-32  
REIL Rwy 14

NE-2, 05 SEP 2024 to 03 OCT 2024

NE-2, 05 SEP 2024 to 03 OCT 2024