

WAAS CH <b>43569</b> <b>W14A</b>	APP CRS <b>144°</b>	Rwy Idg <b>7345</b> TDZE <b>119</b> Apt Elev <b>153</b>
--	------------------------	---

# RNAV (GPS) Z RWY 14

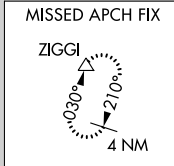
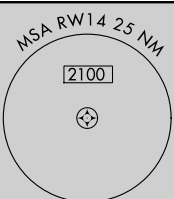
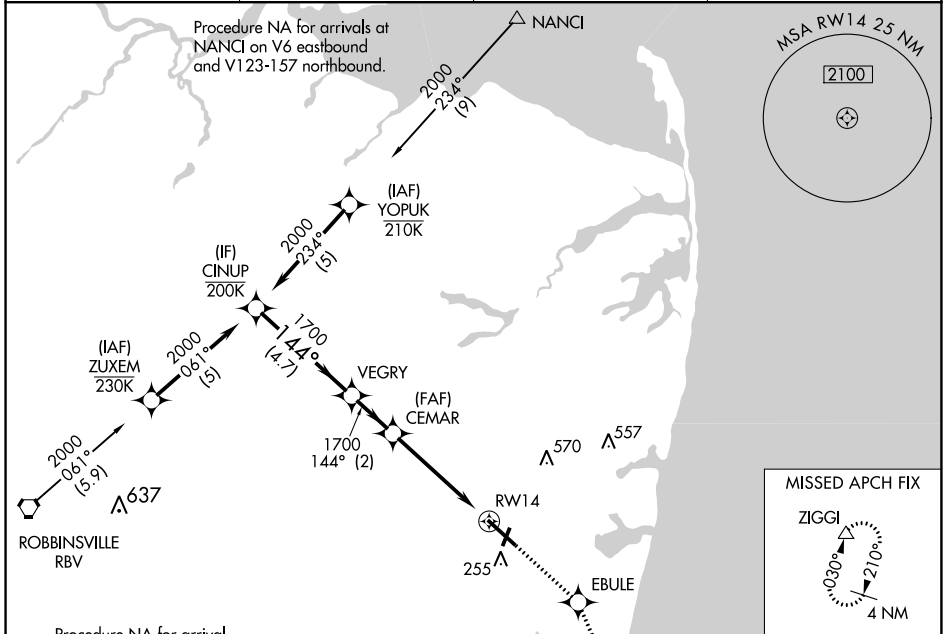
MONMOUTH EXEC (BLM)

RNP APCH - GPS.

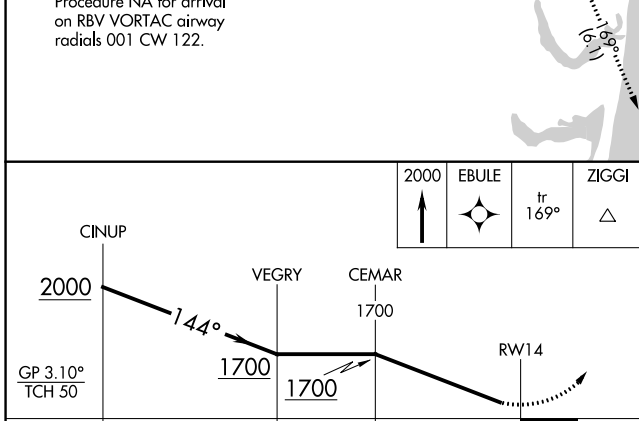
▼ For uncompensated Baro-VNAV systems, LNAV/VNAV NA below -15°C or above 54°C. Rwy 14 helicopter visibility reduction below 3/4 SM NA. When local altimeter setting not received, use Lakehurst altimeter setting and increase all DA by 39 feet. Baro-VNAV NA when using Lakehurst altimeter setting.

MISSED APPROACH:  
Climb to 2000 direct  
EBULE, track 169° to  
ZIGGI and hold.

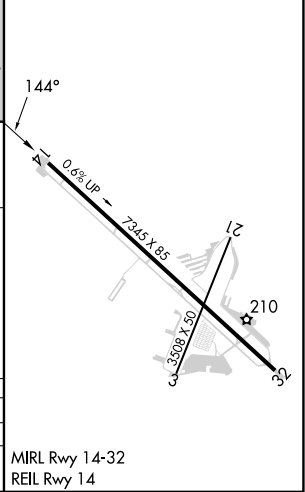
AWOS-3PT <b>121.625</b>	MC GUIRE APP CON <b>126.475 363.8</b>	CLNC DEL <b>126.15</b>	UNICOM <b>123.0</b> (CTAF)
----------------------------	--	---------------------------	-------------------------------



ELEV 153	TDZE 119
----------	----------



CATEGORY	A	B	C	D
LPV DA	369-1 250 (300-1) 250 (300-1)			
LNAV/VNAV DA	369-1	250 (300-1)	372-1 253 (300-1)	383-1 264 (300-1)



NE-2, 05 SEP 2024 to 03 OCT 2024

NE-2, 05 SEP 2024 to 03 OCT 2024