

WAAS CH <b>78572</b> <b>W32A</b>	APP CRS <b>324°</b>	Rwy Idg <b>7345</b> TDZE <b>153</b> Apt Elev <b>153</b>
--	------------------------	---

# RNAV (GPS) Z RWY 32

MONMOUTH EXEC (BLM)

RNP APCH - GPS.

**⚠** For uncompensated Baro-VNAV systems, LNAV/VNAV NA below -15°C or above 54°C.  
**⚠** Rwy 32 helicopter visibility reduction below 3/4 SM NA. When local altimeter setting not received, use Lakehurst altimeter setting and increase LPV DA to 442 feet, increase LNAV/VNAV DA to 442 feet. Baro-VNAV NA when using Lakehurst altimeter setting.

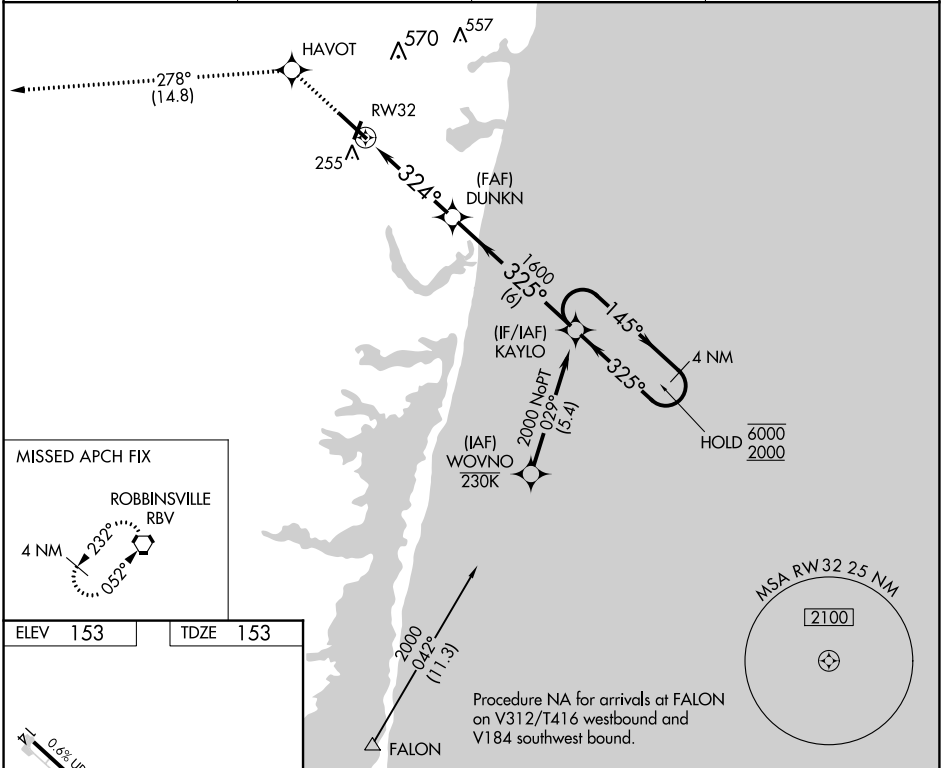
**MISSED APPROACH:**  
 Climb to 2000 direct HAVOT, track 278° to RBV VORTAC and hold.

AWOS-3PT  
**121.625**

MC GUIRE APP CON  
**126.475 363.8**

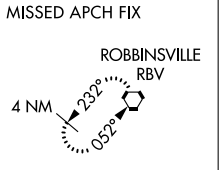
CLNC DEL  
**126.15**

UNICOM  
**123.0 (CTAF)**

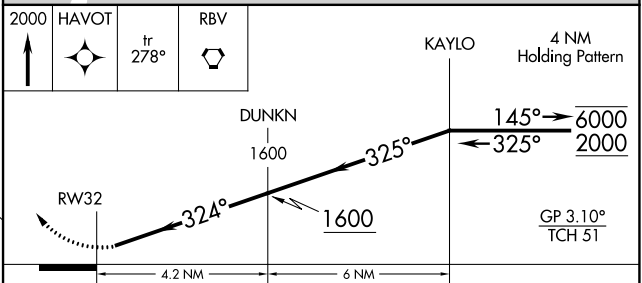
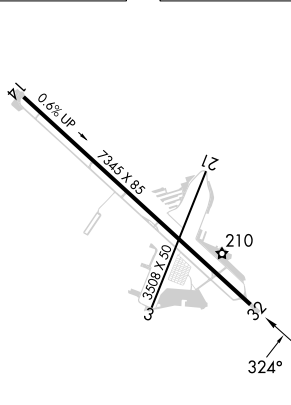


NE-2, 05 SEP 2024 to 03 OCT 2024

NE-2, 05 SEP 2024 to 03 OCT 2024



ELEV 153	TDZE 153
----------	----------



CATEGORY	A	B	C	D
LPV DA		403-1	250 (300-1)	
LNAV/VNAV DA		403-1	250 (300-1)	

MIRL Rwy 14-32  
 REIL Rwy 14