

WAAS CH 99417 W17A	APP CRS 173°	Rwy Idg TDZE 1553 Apt Elev 1563
--	------------------------	---

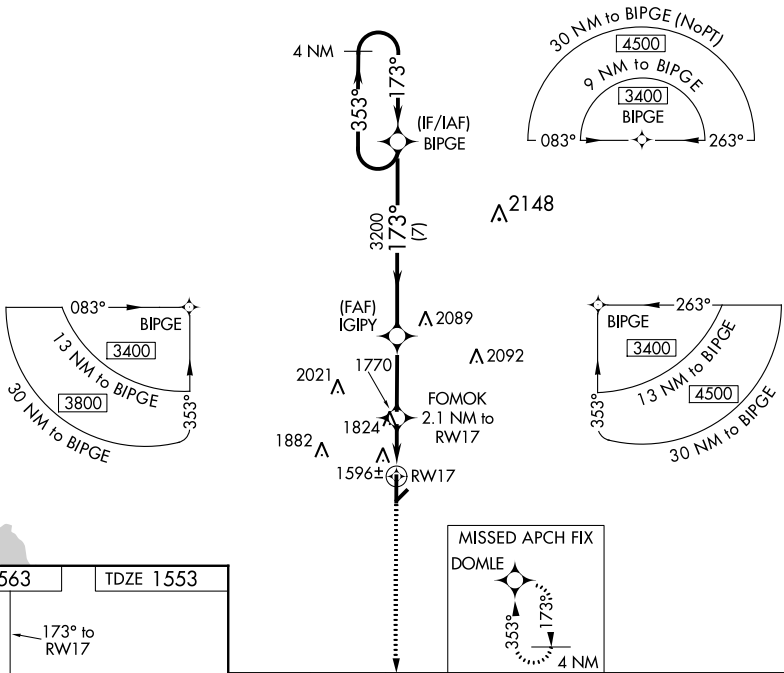
RNAV (GPS) RWY 17

HOBART RGNL (HBR)

⚠ For uncompensated Baro-VNAV systems, LNAV/VNAV NA below -18°C (0°F) or above 45°C (113°F). DME/DME RNP-0.3 NA. When local altimeter setting not received, use Altus/Quartz Mountain Rgnl altimeter setting and increase all DA 71 feet and all MDA 80 feet, increase LPV and LNAV/VNAV all Cats, LNAV Cats C and D and Circling Cat C visibility ¼ mile. Baro-VNAV NA when using Altus/Quartz Mountain altimeter setting. VDP NA with Altus/Quartz Mountain altimeter setting.

MISSED APPROACH: Climb to 4000 direct DOMLE and hold.

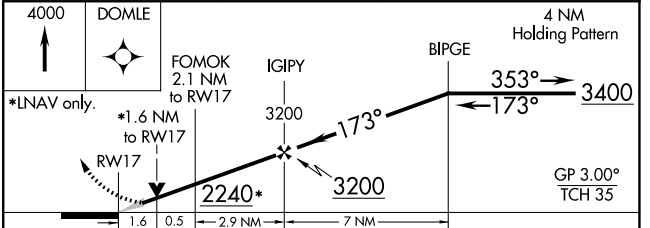
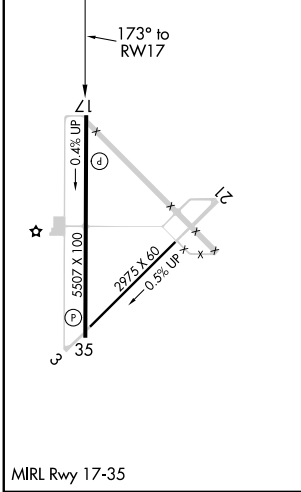
ASOS 133.325	ALTUS APP CON * 125.1 353.7	UNICOM 122.8 (CTAF)
------------------------	---------------------------------------	-------------------------------



SC-1, 05 SEP 2024 to 03 OCT 2024

SC-1, 05 SEP 2024 to 03 OCT 2024

ELEV 1563	TDZE 1553
------------------	------------------



CATEGORY	A	B	C	D
LPV DA		1803-1	250 (300-1)	
LNAV/VNAV DA		1900-1¼	347 (400-1¼)	
LNAV MDA	2080-1	527 (600-1)	2080-1½ 527 (600-1½)	2080-1¾ 527 (600-1¾)
CIRCLING	2080-1	517 (600-1)	2320-2¼ 757 (800-2¼)	2460-3 897 (900-3)