

HI-TACAN Z RWY 23L/R

AL-934 [USN]

OCEANA NAS (APOLLO SOUCEK FLD) (KNTU)

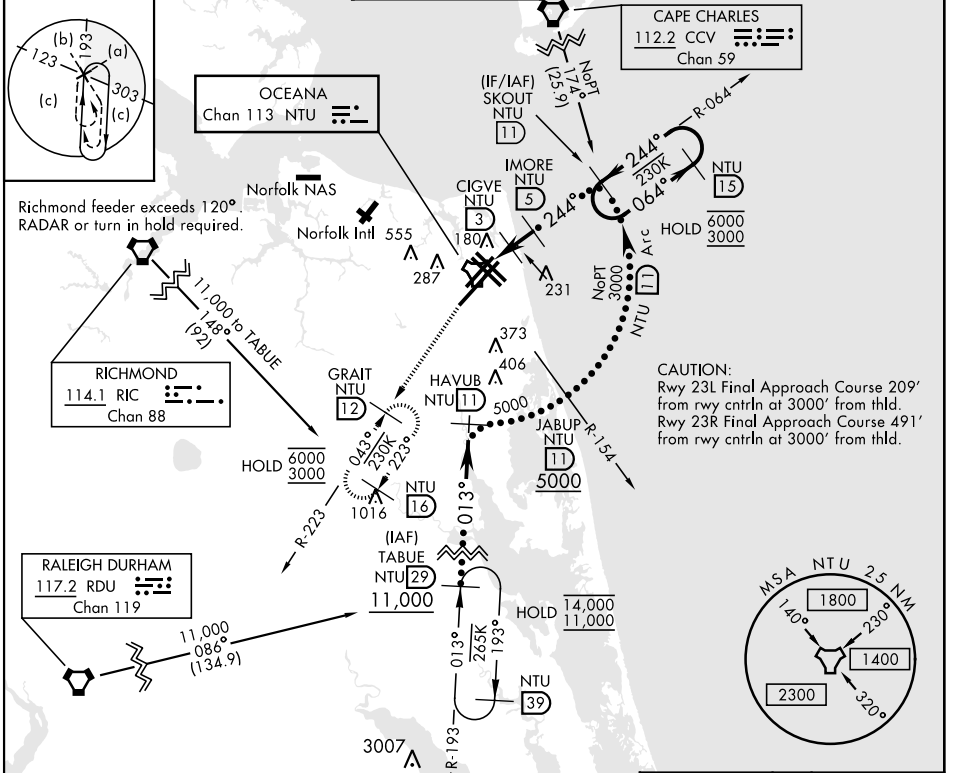
TACAN NTU Chan 113	APCH CRS 244°	Rwy Idg 23L 12,001 23R 8000	TDZE 23L 21 23R 20	Arprt Elev 22
-----------------------	------------------	--------------------------------	-----------------------	------------------

ALSF-1

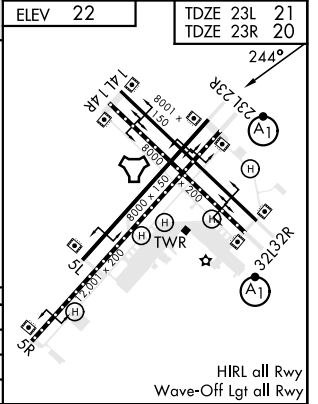
* When ALS inop, increase CAT CDE vis to 1½ miles

MISSED APPROACH: Climb to 3000 via R-064 to NTU TACAN, and via R-223 to GRAIT and hold.

ATIS 317.6	APP/DEP CON 123.9 266.8	TOWER 127.075 360.2	GND CON 119.6 336.4	CLNC DEL 254.4	ASR/ PAR
---------------	----------------------------	------------------------	------------------------	-------------------	-------------



3000	NTU R-064	NTU	NTU R-223
TACAN	WENID 1.3	1.8	CIGVE 3
IMORE 5	1600	244°	SKOUT 11
1.7 NM	2 NM	840	1600
3000	3000	6000	3000
3.39° TCH 55	3.38° TCH 55	Rwy 23L	Rwy 23R
CATEGORY	C	D	E
S-23L*	440-¾	419 (500-¾)	
S-23R	440-1½	420 (500-1½)	
CIRCLING	600-1½ 578 (600-1½)	600-2 578 (600-2)	900-3 878 (900-3)



HI-TACAN Z RWY 23L/R

NE-3, 05 SEP 2024 to 03 OCT 2024

NE-3, 05 SEP 2024 to 03 OCT 2024