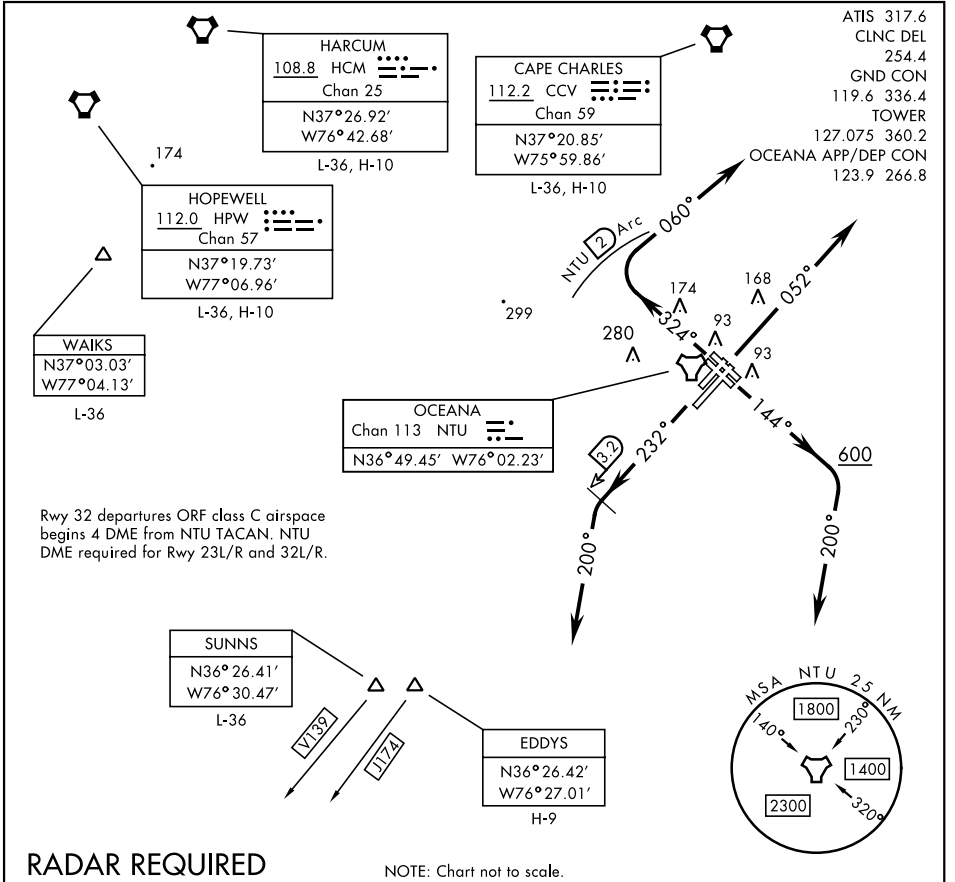


OCEANA-FIVE DEPARTURE (NTU5•NTU)

OCEANA NAS (APOLLO SOUCEK FLD) (KNTU)

AL-934 [USN]

VIRGINIA BEACH, VIRGINIA



NE-3, 05 SEP 2024 to 03 OCT 2024

NE-3, 05 SEP 2024 to 03 OCT 2024

RADAR REQUIRED

DEPARTURE ROUTE DESCRIPTION

- TAKE-OFF RWY 5L/R:** Climb heading 052°. Thence...
- TAKE-OFF RWY 14L/R:** Climb heading 144° to 600 then climbing right turn heading 200°. Thence...
- TAKE-OFF RWY 23L/R:** Climb heading 232°, crossing NTU TACAN 3.2 DME, turn left heading 200°. Thence...
- TAKE-OFF RWY 32L/R:** Climb heading 324° to assigned altitude, turn right heading 060° within NTU TACAN 2 DME. Thence...
...maintain 4000 or assigned lower altitude.

- CAPE CHARLES TRANSITION (NTU5.CCV):** Via RADAR vectors to CCV VORTAC.
- EDDYS TRANSITION (NTU5.EDDYS):** Via RADAR vectors to EDDYS.
- HARCUM TRANSITION (NTU5.HCM):** Via RADAR vectors to HCM VORTAC.
- HOPEWELL TRANSITION (NTU5.HPW):** Via RADAR vectors to HPW VORTAC.
(At or below 17,000 only).
- SUNNS TRANSITION (NTU5.SUNNS):** Via RADAR vectors to SUNNS.
(At or below 17,000 only).
- WAIKS TRANSITION (NTU5.WAIKS):** Via RADAR vectors to WAIKS.

OCEANA-FIVE DEPARTURE (NTU5•NTU)

VIRGINIA BEACH, VIRGINIA

OCEANA NAS (APOLLO SOUCEK FLD) (KNTU)