

RNAV (GPS) RWY 32L/R

AL-934 (USN) OCEANA NAS (APOLLO SOUCEK FLD) (KNTU)

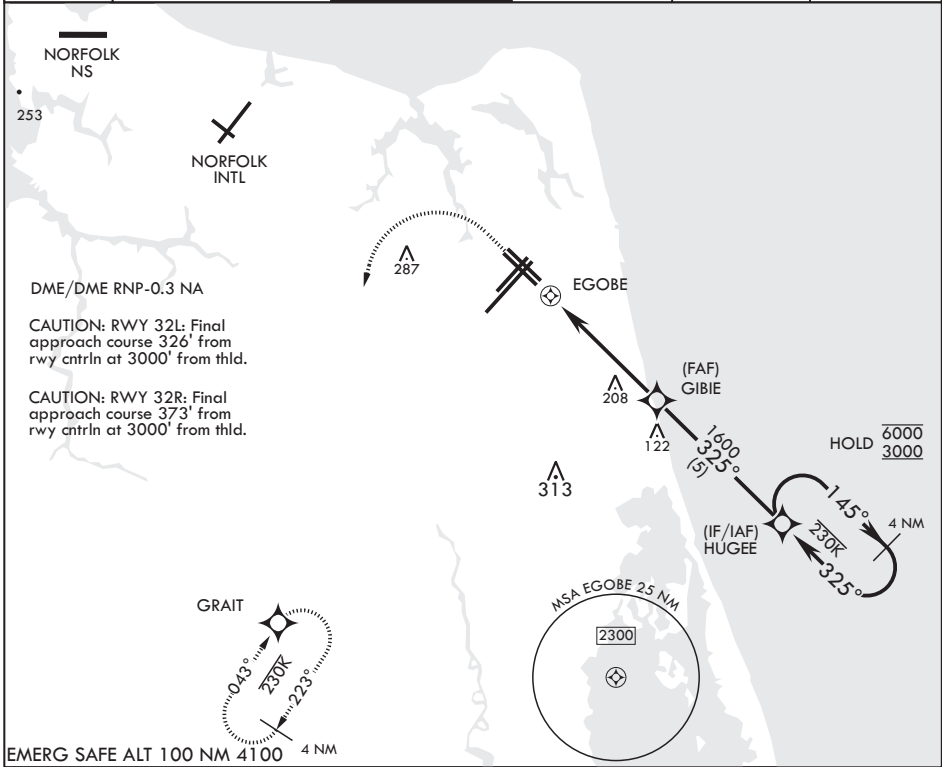
APCH CRS 325°	Rwy Idg	32L	32R
	TDZE	8000	8001
	Arprt Elev	22	20

V * When ALS inop increase CAT AB vis to 1 mile, CAT CD vis to 1 1/8 miles.

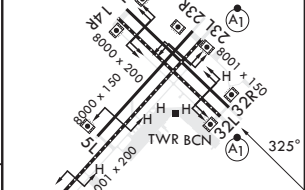
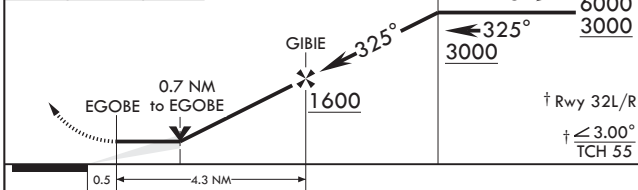
Rwy 32L
ALSF-1

MISSED APPROACH: Climbing 1100 then climbing left turn to 3000 direct GRAIT and hold.

ATIS 317.6	APP CON/DEP CON 123.9 266.8	TOWER 127.075 360.2	GND CON 119.6 336.4	CLNC DEL 254.4	ASR/PAR
---------------	--------------------------------	------------------------	------------------------	-------------------	---------



1100	3000	GRAIT	RNAV TCH not coincident with PAR TCH (50ft).	4 NM Holding Pattern	ELEV 22	TDZE 32L 22	TDZE 32R 20
------	------	-------	--	----------------------	---------	-------------	-------------



CATEGORY	A	B	C	D
LNAV MDA	460-1	440 (500-1)	460-1¼	440 (500-1¼)
LNAV MDA*	460-½	438 (500-½)	460-¾	438 (500-¾)
C CIRCLING	500-1	478 (500-1)	600-1½	600-2
			578 (600-1½)	578 (600-2)

HIRL all Rwys
Wave-Off Lights all Rwys

RNAV (GPS) RWY 32L/R

NE-3, 05 SEP 2024 to 03 OCT 2024

NE-3, 05 SEP 2024 to 03 OCT 2024