

# WYNNS-FOUR DEPARTURE (WYNNS4•WYNNS)

OCEANA NAS (APOLLO SOUCEK FLD) (KNTU)  
VIRGINIA BEACH, VIRGINIA

ATIS 317.6  
CLNC DEL  
254.4  
GND CON  
119.6 336.4  
TOWER  
127.075 360.2  
DEP CON  
123.9 266.8

AL-934 [USN]

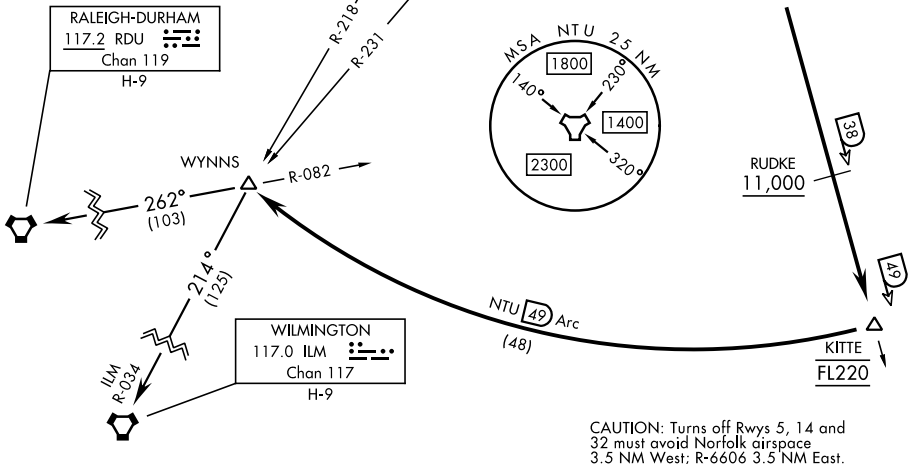
NORFOLK  
116.9 ORF  
Chan 116

OCEANA  
Chan 113 NTU

Rwy	Knots	60	120	180	240	300	360
All	V/V(fpm)	500	1000	1500	2000	2500	3000

ATC Minimum Climb Rate to FL220

## NTU TACAN REQUIRED



CAUTION: Turns off Rws 5, 14 and 32 must avoid Norfolk airspace 3.5 NM West; R-6606 3.5 NM East.

NE-3, 05 SEP 2024 to 03 OCT 2024

NE-3, 05 SEP 2024 to 03 OCT 2024

**DEPARTURE ROUTE DESCRIPTION**

**TAKEOFF RWY 5L/R or 14L/R:** Climbing right turn to intercept NTU TACAN R-175 to CANOB. Thence...

**TAKEOFF RWY 23L/R:** Climbing left turn to intercept NTU TACAN R-175 to CANOB. Thence...

**TAKEOFF RWY 32L/R:** Climbing left turn within NTU TACAN 2 DME to intercept NTU R-175. Thence...

...via NTU R-175 to KITTE, arc south of NTU via the 49 mile arc to WYNNNS. Cross RUDKE at or above 11,000. Cross KITTE at FL220, or as assigned. Thence...

**RALEIGH-DURHAM TRANSITION (WYNNS4-RDU):** ...via RDU VORTAC R-082 to RDU.

**WILMINGTON TRANSITION (WYNNS4-ILM):** ...via ILM VORTAC R-034 to ILM.

# WYNNS-FOUR DEPARTURE (WYNNS4•WYNNS)

OCEANA NAS (APOLLO SOUCEK FLD) (KNTU)  
VIRGINIA BEACH, VIRGINIA