

WAAS CH 69217 W04A	APP CRS 044°	Rwy Idg TDZE Apt Elev	7701 889 913
--	------------------------	-----------------------------	---

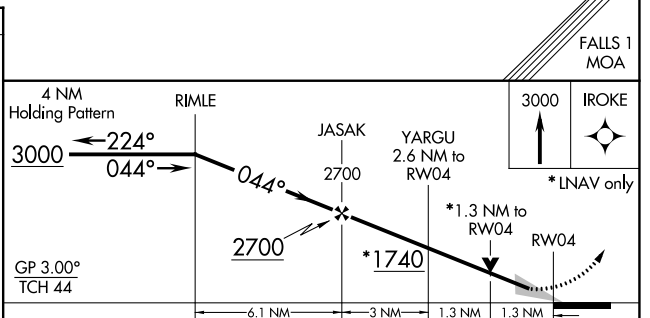
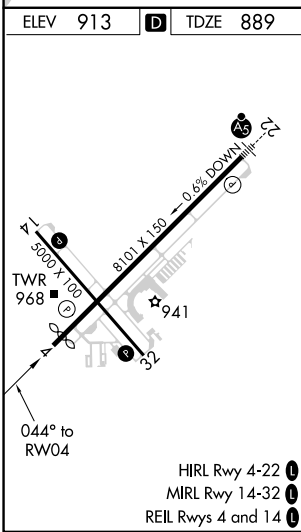
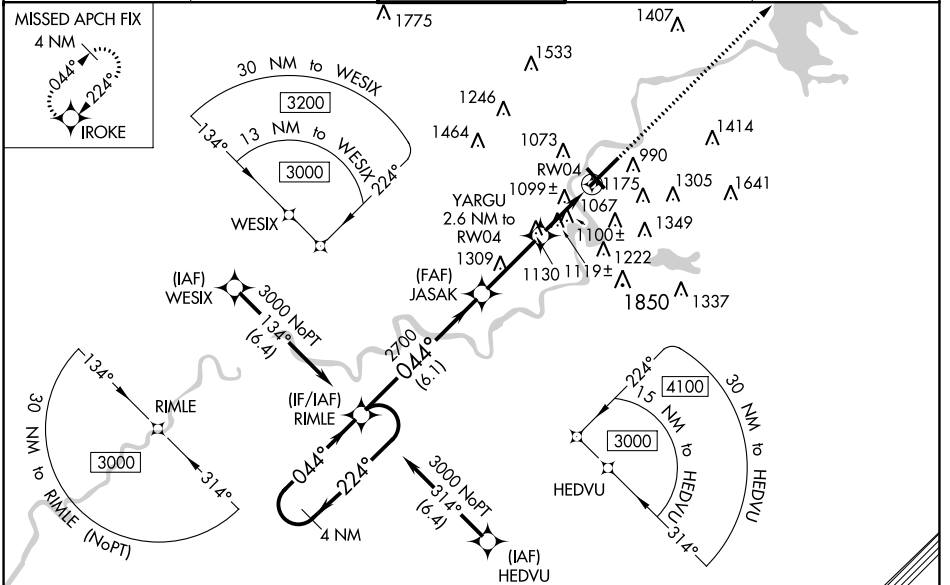
RNAV (GPS) RWY 4

CHIPPEWA VALLEY RGNL (EAU)

⚠ For uncompensated Baro-VNAV systems, LNAV/VNAV NA below -21°C (-5°F) or above 54°C (130°F). Baro-VNAV and VDP NA when using Rice Lake Rgnl/Carl's Fld altimeter setting. DME/DME RNP-0.3 NA. When local altimeter setting not received, use Rice Lake Rgnl/Carl's Fld altimeter setting and increase LPV DA to 1199, LNAV/VNAV DA to 1489 and all visibilities ¾ SM. Increase all MDA 120 feet and LNAV Cat C/D and Circling Cat C visibility ¼ SM. Circling Rwy 32 NA at night.

MISSED APPROACH:
Climb to 3000 direct IROKE and hold.

ATIS 126.025	MINNEAPOLIS CENTER 125.3 335.6	EAU CLAIRE TOWER* 118.575 (CTAF) 0	GND CON 120.925	UNICOM 122.95
------------------------	--	--	---------------------------	-------------------------



CATEGORY	A	B	C	D
LPV DA		1089-¾	200 (200-¾)	
LNAV/VNAV DA		1379-1½	490 (500-1½)	
LNAV MDA	1360-1	471 (500-1)	1360-1¾	471 (500-1¾)
CIRCLING	1480-1 567 (600-1)	1540-1 627 (700-1)	1660-2¼ 747 (800-2¼)	2200-3 1287 (1300-3)

EC-3, 05 SEP 2024 to 03 OCT 2024

EC-3, 05 SEP 2024 to 03 OCT 2024