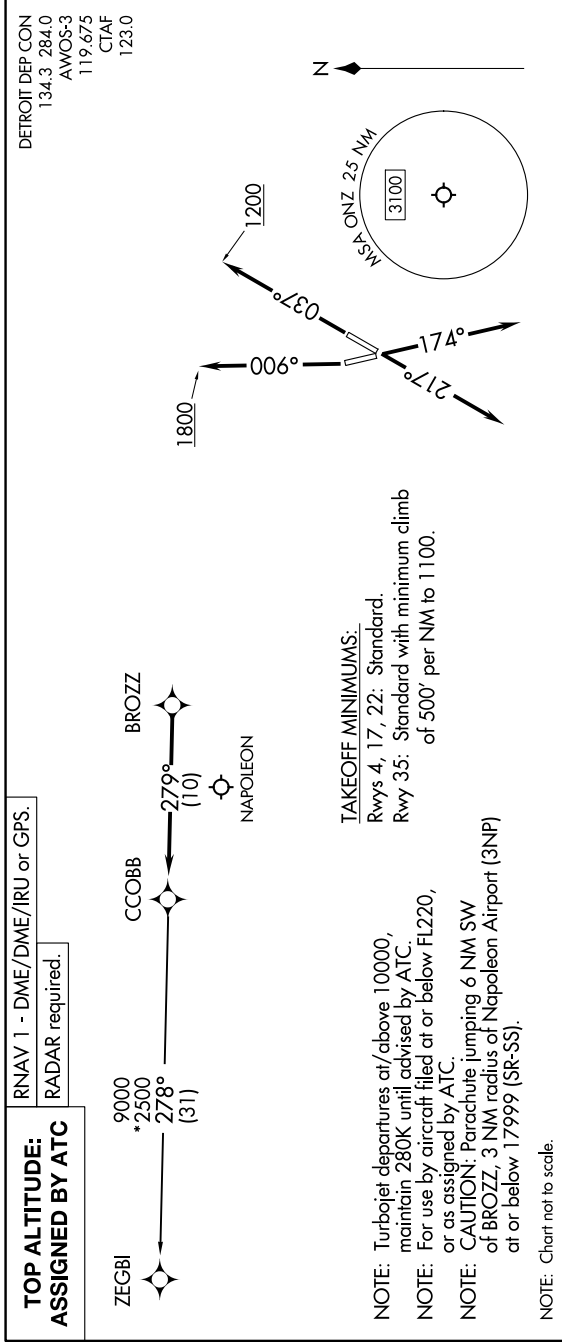


EC-1, 05 SEP 2024 to 03 OCT 2024



DEPARTURE ROUTE DESCRIPTION

**TAKEOFF RUNWAY 4:** Climb on heading 037° to 1200 then as assigned by ATC, thence....  
**TAKEOFF RUNWAY 17:** Climb on heading 174° or as assigned by ATC, thence....  
**TAKEOFF RUNWAY 22:** Climb on heading 217° or as assigned by ATC, thence....  
**TAKEOFF RUNWAY 35:** Climb on heading 006° to 1800 then as assigned by ATC, thence....

....for RADAR vectors to BROZZ, then on track 279° to CCOBB, then on (transition).  
 Maintain ATC assigned altitude, expect filed altitude 10 minutes after departure.

ZEGBI TRANSITION (CCOBB3\_ZEGBI):

EC-1, 05 SEP 2024 to 03 OCT 2024