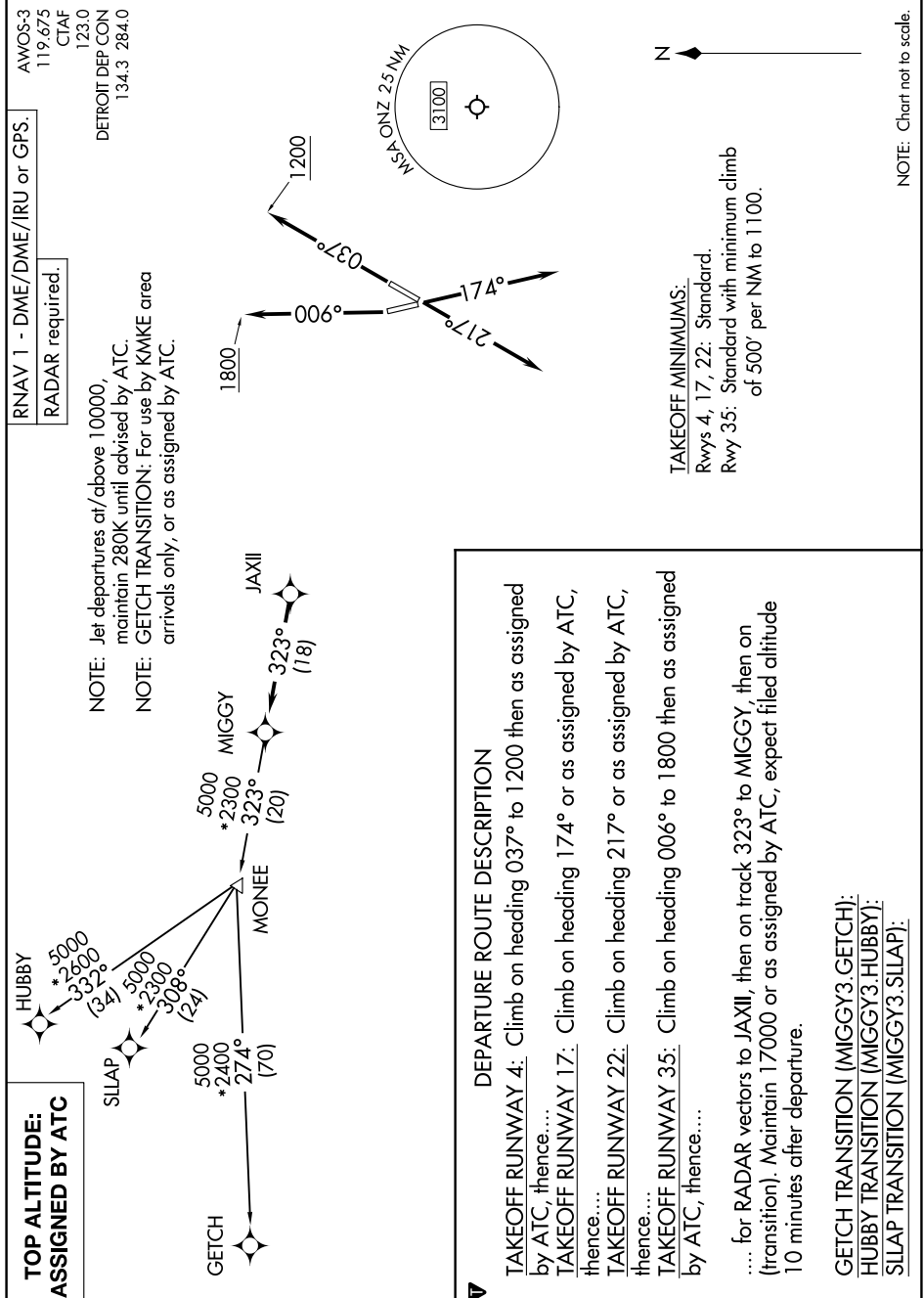


EC-1, 05 SEP 2024 to 03 OCT 2024



EC-1, 05 SEP 2024 to 03 OCT 2024

**DEPARTURE ROUTE DESCRIPTION**

**TAKEOFF RUNWAY 4:** Climb on heading 037° to 1200 then as assigned by ATC, thence....

**TAKEOFF RUNWAY 17:** Climb on heading 174° or as assigned by ATC, thence....

**TAKEOFF RUNWAY 22:** Climb on heading 217° or as assigned by ATC, thence....

**TAKEOFF RUNWAY 35:** Climb on heading 006° to 1800 then as assigned by ATC, thence....

.... for RADAR vectors to JAXII, then on track 323° to MIGGY, then on (transition). Maintain 17000 or as assigned by ATC, expect filed altitude 10 minutes after departure.

**GETCH TRANSITION (MIGGY3.GETCH):**  
**HUBBY TRANSITION (MIGGY3.HUBBY):**  
**SLLAP TRANSITION (MIGGY3.SLLAP):**