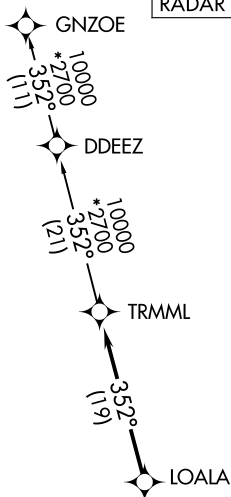


**TOP ALTITUDE:
ASSIGNED BY ATC**

RNAV 1 - DME/DME/IRU or GPS.
RADAR required.

DETROIT DEP CON
134.3 284.0
AWOS-3
119.675
CTAF
123.0

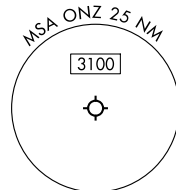
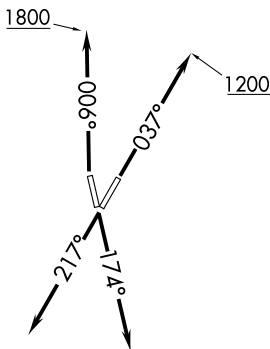


TAKEOFF MINIMUMS:

Rwys 4, 17, 22: Standard.

Rwy 35: Standard with minimum climb
of 500' per NM to 1100.

NOTE: Turbojet departures at/above 10000,
maintain 280K until advised by ATC.



NOTE: Chart not to scale.

DEPARTURE ROUTE DESCRIPTION

TAKEOFF RUNWAY 4: Climb on heading 037° to 1200 then as assigned by ATC,
thence....

TAKEOFF RUNWAY 17: Climb on heading 174° or as assigned by ATC,
thence....

TAKEOFF RUNWAY 22: Climb on heading 217° or as assigned by ATC,
thence....

TAKEOFF RUNWAY 35: Climb on heading 006° to 1800 then as assigned by ATC,
thence....

....for RADAR vectors to LOALA, then on track 352° to TRMML, then on (transition).
Maintain ATC assigned altitude, expect filed altitude 10 minutes after departure.

GNZOE TRANSITION (TRMML4.GNZOE):