

LOC/DME I-ALO 111.7 Chan 54	APP CRS 308°	Rwy Idg TDZE Apt Elev	8399 868 873
---	------------------------	-----------------------------	---

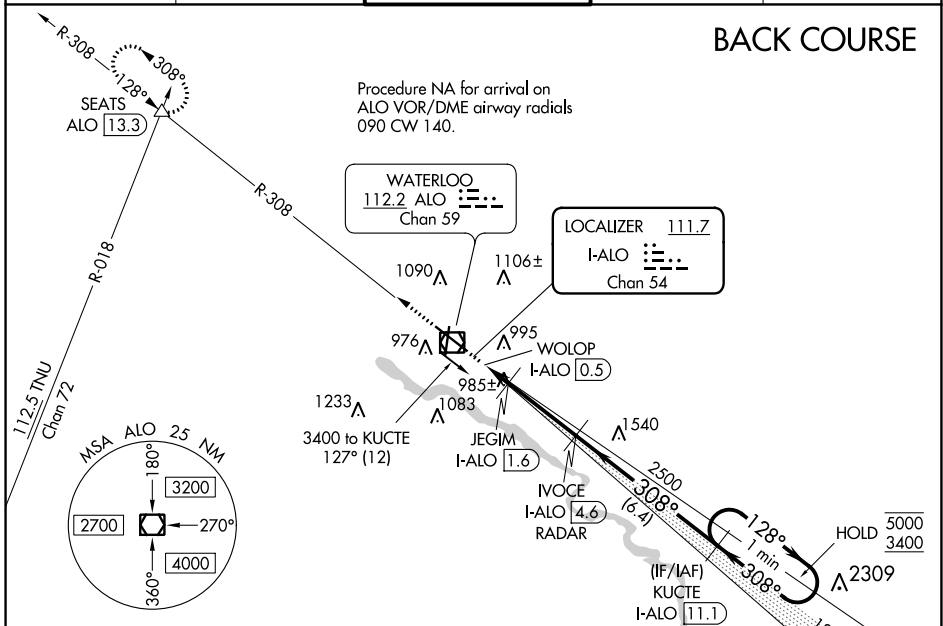
LOC BC RWY 30

WATERLOO RGNL (A.LO)

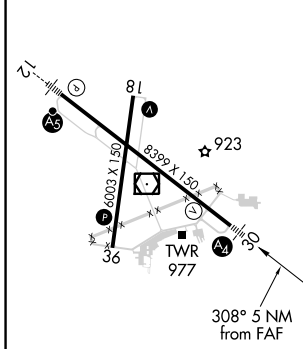
DME required.		MALS	MISSED APPROACH: Climb to 3500 on ALO VOR/DME R-308 to SEATS INT/ALO 13.3 DME and hold.	

ATIS 120.65	WATERLOO APP CON* 118.9 251.15	WATERLOO TOWER* 125.075 (CTAF) 257.8	GND CON 121.9 269.1	UNICOM 122.95
-----------------------	--	--	-------------------------------	-------------------------

BACK COURSE



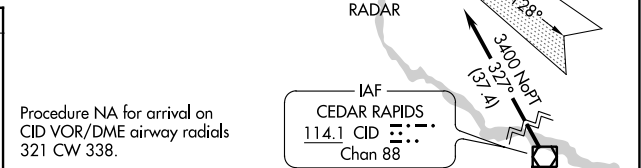
ELEV 873	D	TDZE 868
----------	----------	----------



HIRL Rwy 12-30
MIRL Rwy 18-36
REIL Rwy 18 and 36

FAF to MAP 4.1 NM

Knots	60	90	120	150	180
Min:Sec	4:06	2:44	2:03	1:38	1:22



3500	SEATS	Disregard glide slope indications.		KUCTE	One Minute Holding Pattern
ALO R-308		IVOCE	I-ALO 4.6	I-ALO 11.1	
I-ALO DME ANTENNA	JEGIM	WOLOP	TCH 52	RADAR	
	I-ALO 1.6	I-ALO 0.5	3.00°		
			2500		
			308°	128°	5000
				308°	3400
					Use I-ALO DME when on the localizer course.

CATEGORY	A	B	C	D
S-LOC 30		1240-¾	372 (400-¾)	
C CIRCLING	1360-1 487 (500-1)	1400-1 527 (600-1)	1480-1¾ 607 (700-1¾)	1600-2¼ 727 (800-2¼)