

# RNAV (GPS) RWY 12

WATERLOO RGNL (A.L.O)

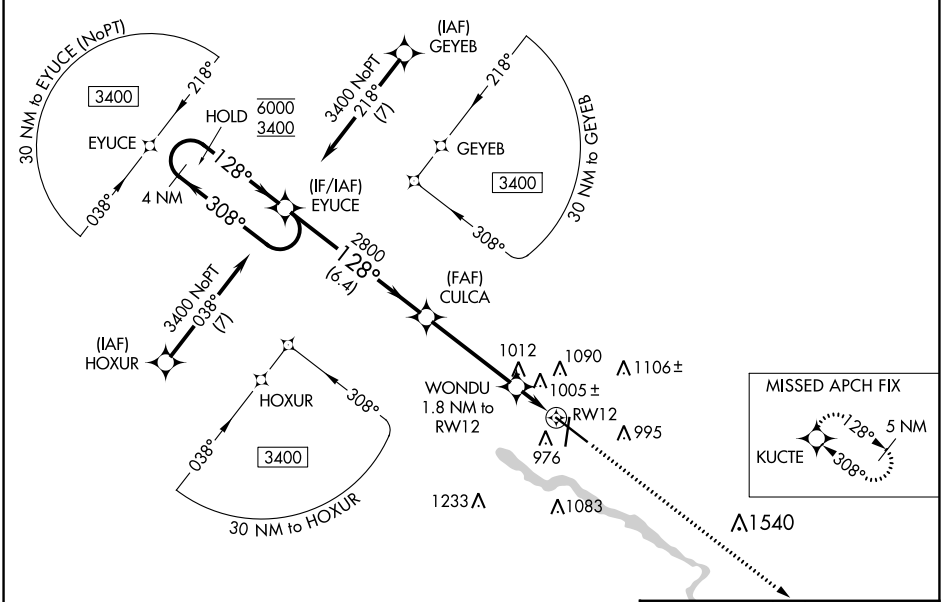
WAAS CH <b>72801</b> <b>W12A</b>	APP CRS <b>128°</b>	Rwy Idg TDZE Apt Elev	<b>8399</b> <b>873</b> <b>873</b>
--	------------------------	-----------------------------	---

RNP APCH.

**⚠** For uncompensated Baro-VNAV systems, LNAV/VNAV NA below -19°C or above 54°C. For inop ALS, increase LNAV/VNAV all Cats to RVR 5500.  
# RVR 1800 authorized with use of FD or AP or HUD to DA.

MALSR MISSED APPROACH: Climb to 3400 direct KUCTE and hold.

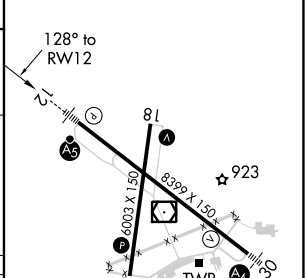
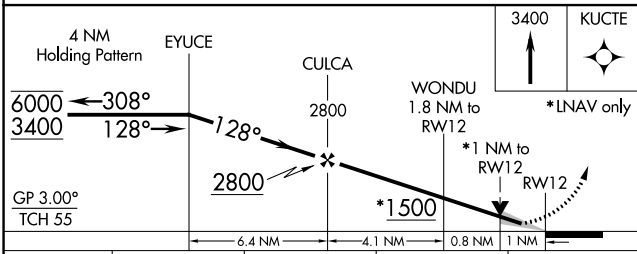
ATIS <b>120.65</b>	WATERLOO APP CON* <b>118.9 251.15</b>	WATERLOO TOWER* <b>125.075 (CTAF) 0 257.8</b>	GND CON <b>121.9 269.1</b>	UNICOM <b>122.95</b>
-----------------------	--	--	-------------------------------	-------------------------



NC-3, 05 SEP 2024 to 03 OCT 2024

NC-3, 05 SEP 2024 to 03 OCT 2024

ELEV 873	<b>D</b> TDZE 873
----------	-------------------



CATEGORY	A	B	C	D
LPV DA#	1073/24 200 (200-½)			
LNAV/VNAV DA	1252/30 379 (400-¾)			
LNAV MDA	1260/24 387 (400-½)	1260/35 387 (400-¾)		
<b>C</b> CIRCLING	1360-1 487 (500-1)	1400-1 527 (600-1)	1480-1¾ 607 (700-1¾)	1600-2¼ 727 (800-2¼)

HIRL Rwy 12-30   
MIRL Rwy 18-36   
REIL Rwy 18 and 36