

WAAS CH <b>97704</b> W01A	APP CRS <b>007°</b>	Rwy Idg TDZE Apt Elev	<b>5005</b> <b>1208</b> <b>1208</b>
---------------------------------	------------------------	-----------------------------	---

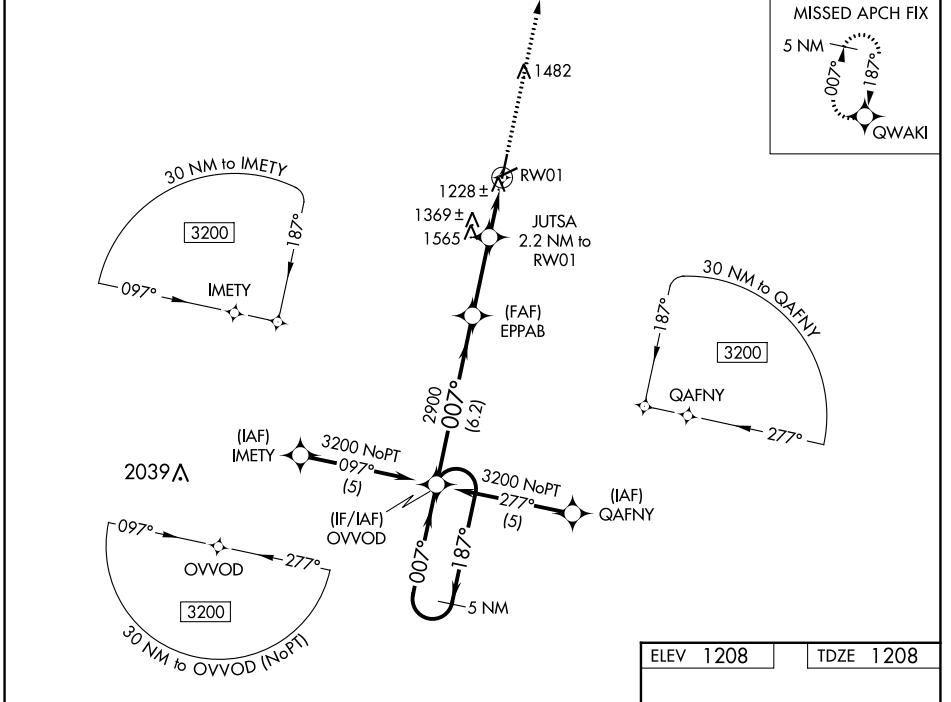
# RNAV (GPS) RWY 1

EMPORIA MUNI (EMP)

RNP APCH-GPS.  
 ▼ For uncompensated Baro-VNAV systems, LNAV/VNAV NA below -17°C or above 54°C. Circling NA to Rwys 6 and 24.

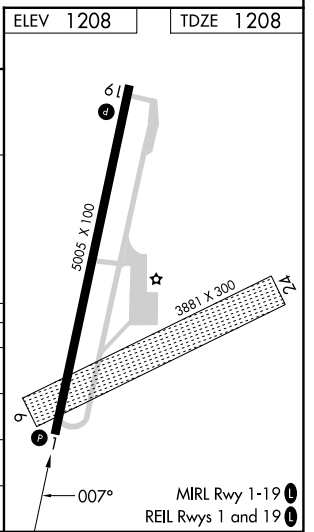
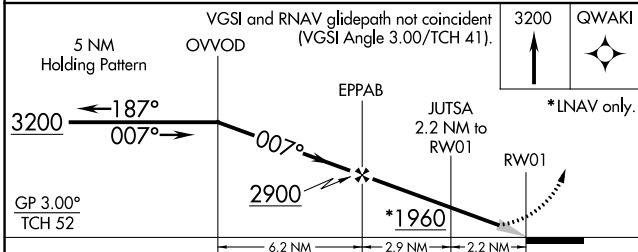
MISSED APPROACH: Climb to 3200 direct QWAKI and hold.

ASOS <b>126.125</b>	KANSAS CITY CENTER <b>127.725 270.25</b>	UNICOM <b>122.8</b> (CTAF) <b>1</b>
------------------------	---	--



NC-2, 05 SEP 2024 to 03 OCT 2024

NC-2, 05 SEP 2024 to 03 OCT 2024



CATEGORY	A	B	C	D
LPV DA	1458-3/4		250 (300-3/4)	NA
LNAV/VNAV DA	1642-1 1/4		434 (500-1 1/4)	NA
LNAV MDA	1800-1	592 (600-1)	1800-1 3/4 592 (600-1 3/4)	NA
CIRCLING	1800-1	592 (600-1)	1880-2 672 (700-2)	NA