


WAAS CH <b>45505</b> <b>W26A</b>	APP CRS <b>264°</b>	Rwy Idg TDZE Apt Elev	<b>5500</b> <b>671</b> <b>672</b>
--	------------------------	-----------------------------	---

# RNAV (GPS) RWY 26

KEOKUK MUNI (EOK)

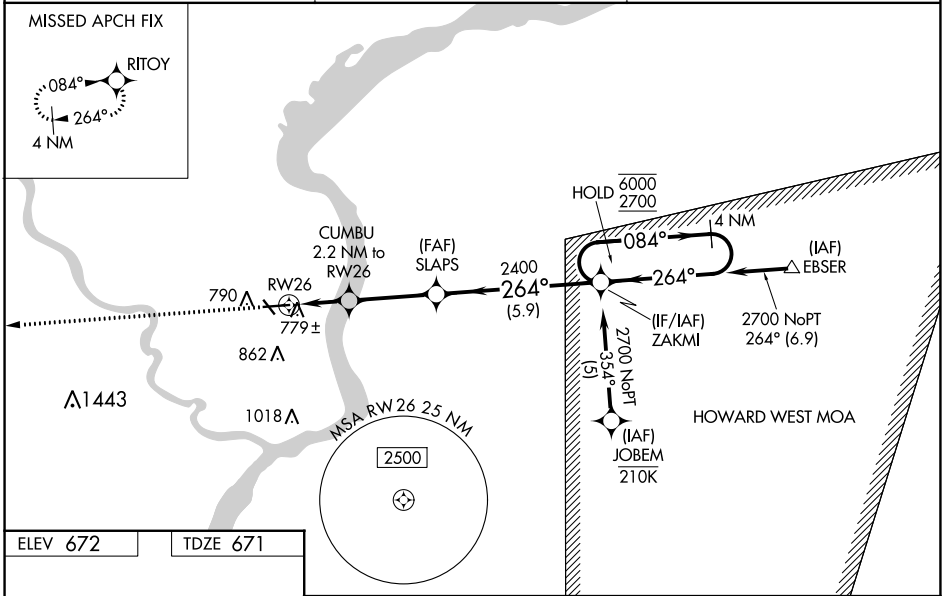
**RNP APCH - GPS.**

**⚠** Circling Rwy 32 NA at night. Baro-VNAV and VDP NA when using Burlington altimeter setting. Inop table does not apply to LPV. For uncompensated Baro-VNAV systems, LNAV/VNAV NA below -21°C or above 54°C. When local altimeter setting not received, use Burlington altimeter setting and increase LPV DA to 927 feet, increase LNAV/VNAV DA to 1005 feet, increase all MDAs 60 feet, and Circling visibility Cat C ¼ SM. For inop ALS, increase LNAV/VNAV all Cats visibility to ¾ SM and LNAV all Cats visibility to 1 SM. For inop ALS, when using Burlington altimeter setting, increase LNAV/VNAV all Cats and LNAV Cats A and B visibility to 1 SM.

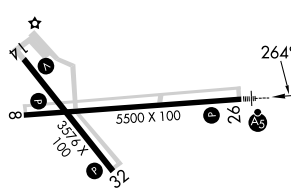
**MALSR**  


**MISSED APPROACH:**  
Climb to 2700 direct RIT0Y and hold.

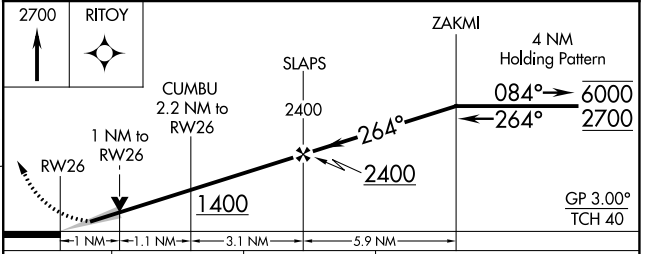
<b>AWOS-3</b> <b>118.375</b>	<b>KANSAS CITY CENTER</b> <b>126.225 317.775</b>	<b>UNICOM</b> <b>122.8 (CTAF) 0</b>
---------------------------------	---	--



**ELEV 672** | **TDZE 671**



REIL Rwy 8, 14, and 32 **0**  
MIRL Rwy 8-26 and 14-32 **0**



	A	B	C	D
LPV DA	871-¾	200 (200-¾)		NA
LNAV/VNAV DA	949-¾	278 (300-¾)		NA
LNAV MDA	1040-¾	369 (400-¾)		NA
CIRCLING	1180-1 508 (600-1)	1220-1 548 (600-1)	1220-1½ 548 (600-1½)	NA

NC-3, 05 SEP 2024 to 03 OCT 2024

NC-3, 05 SEP 2024 to 03 OCT 2024