

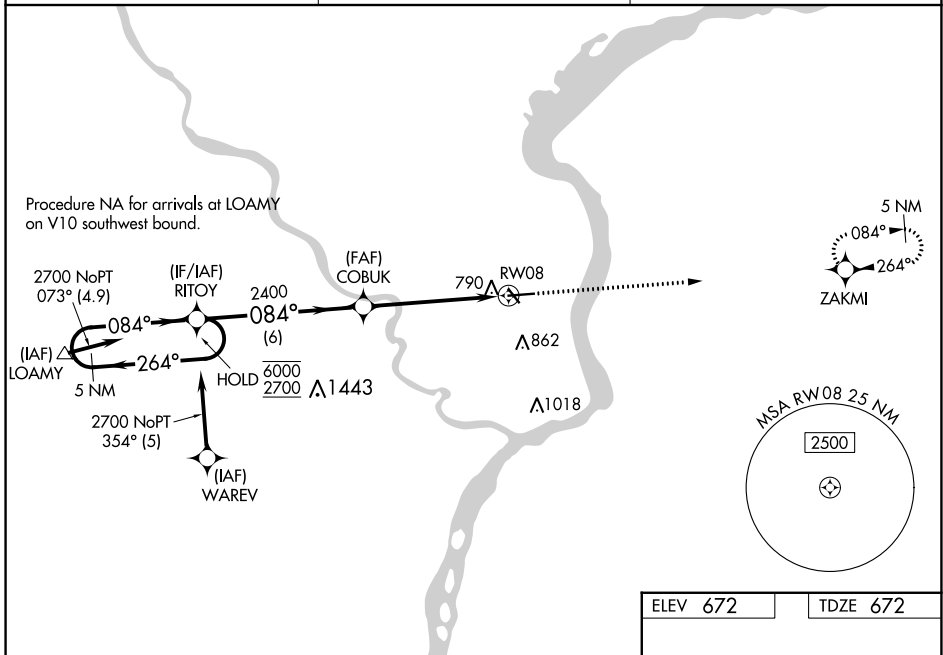
| | | |
|--|------------------------|---|
| WAAS CH 97304 W08A | APP CRS 084° | Rwy Idg TDZE 672 Apt Elev 672 |
|--|------------------------|---|

RNAV (GPS) RWY 8

KEOKUK MUNI (EOK)

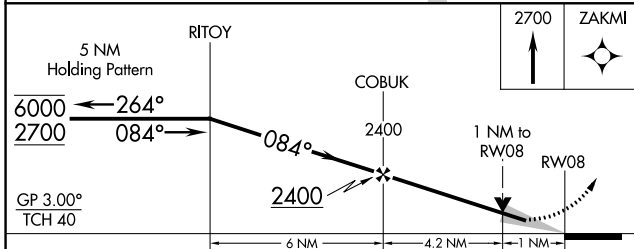
| | |
|---|---|
| RNP APCH - GPS. | MISSED APPROACH: Climb to 2700 direct ZAKMI and hold. |
| <p>⚠ Circling to Rwy 32 NA at night. Baro-VNAV and VDP NA when using Burlington altimeter setting. For uncompensated Baro-VNAV systems, LNAV/VNAV NA below -16°C or above 54°C. When local altimeter setting not received, use Burlington altimeter setting: increase LPV DA to 978 feet; LNAV/VNAV DA to 1116; increase all MDAs 60 feet and visibility Cat C ¼ SM.</p> | |

| | | |
|--------------------------|--|---------------------------------|
| AWOS-3 118.375 | KANSAS CITY CENTER 126.225 317.775 | UNICOM 122.8 (CTAF) 0 |
|--------------------------|--|---------------------------------|

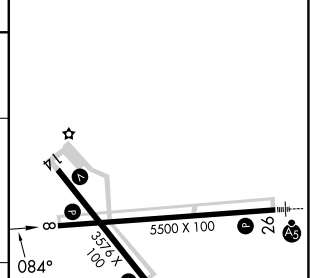


NC-3, 05 SEP 2024 to 03 OCT 2024

NC-3, 05 SEP 2024 to 03 OCT 2024



| | |
|----------|----------|
| ELEV 672 | TDZE 672 |
|----------|----------|



| CATEGORY | A | B | C | D |
|--------------|-----------------------|-----------------------|-------------------------|----|
| LPV DA | 922-1 250 (300-1) | | | NA |
| LNAV/VNAV DA | 1060-1½ 388 (400-1½) | | | NA |
| LNAV MDA | 1040-1 368 (400-1) | | | NA |
| CIRCLING | 1180-1 508 (600-1) | 1220-1 548 (600-1) | 1220-1½ 548 (600-1½) | NA |

| |
|---------------------------|
| REIL Rwy 8, 14, and 32 0 |
| MIRL Rwy 8-26 and 14-32 0 |