

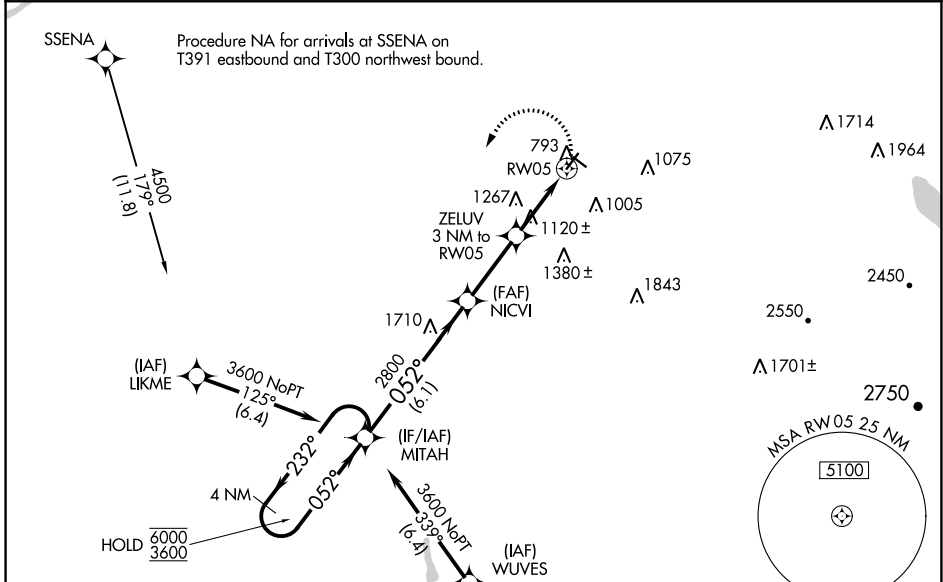
WAAS CH <b>93729</b> <b>W05A</b>	APP CRS <b>052°</b>	Rwy Idg TDZE Apt Elev	<b>3994</b> <b>771</b> <b>790</b>
--	------------------------	-----------------------------	---

# RNAV (GPS) RWY 5

MALONE-DUFORT (MAL)

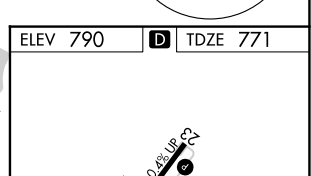
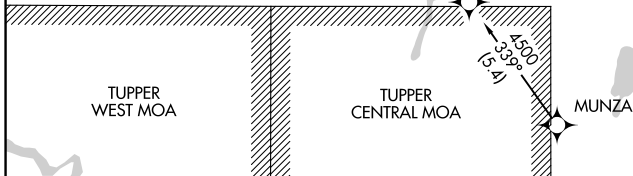
RNP APCH.	Rwy 5 helicopter visibility reduction below 1 SM NA. Use Massena Intl-Richards fld altimeter setting; when not received, use Adirondack Rgnl altimeter setting and increase all MDA 60 feet and increase LP Cat C visibility ½ SM and Circling Cat A and C visibility ¼ SM. Straight-in and Circling Rwy 5 NA at night.	MISSED APPROACH: Climbing left turn to 3600 direct MITAH and hold.
-----------	---	---

AWOS-AV <b>122.8</b>	MSS ASOS <b>128.075</b>	BOSTON CENTER <b>135.25 377.1</b>	UNICOM <b>122.8 (CTAF)</b>
-------------------------	----------------------------	--------------------------------------	-------------------------------



NE-2, 05 SEP 2024 to 03 OCT 2024

NE-2, 05 SEP 2024 to 03 OCT 2024



4 NM Holding Pattern	MITAH	NICVI	ZELUV 3 NM to RWY 5	3600 MITAH
6000 ← 232°	052° →	052°	3.15° TCH 42	
3600		2800	1820	
		6.1 NM	2.9 NM	3 NM

CATEGORY	A	B	C	D
LP MDA	1520-1 749 (800-1)	1520-1¼ 749 (800-1¼)	1520-2 749 (800-2)	NA
LNAV MDA	1580-1 809 (800-1)	1580-1¼ 809 (800-1¼)	1580-2½ 809 (800-2½)	NA
CIRCLING	1580-1 790 (800-1)	1580-1¼ 790 (800-1¼)	1720-2¾ 930 (1000-2¾)	NA

ELEV 790	TDZE 771
REIL Rwy 5 and 23 MIRL Rwy 5-23 and 14-32	