

LOC I-OFK 111.5	APP CRS 014°	Rwy Idg 5801	TDZE 1573
		Apt Elev 1573	

ILS or LOC RWY 2

NORFOLK RGNL/KARL STEFAN MEML FLD (OFK)

⚠ For inop ALS, increase S-LOC 2 Cat C/D visibility to 1½ SM.

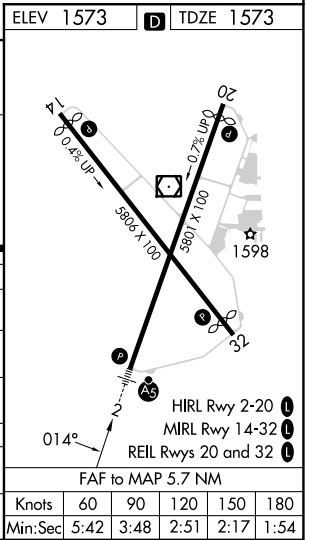
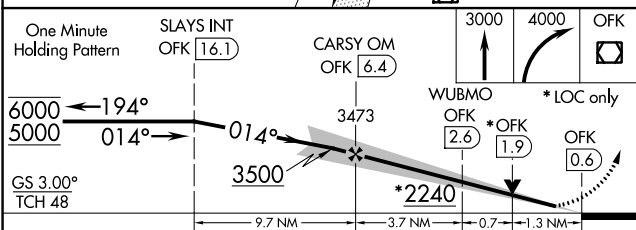
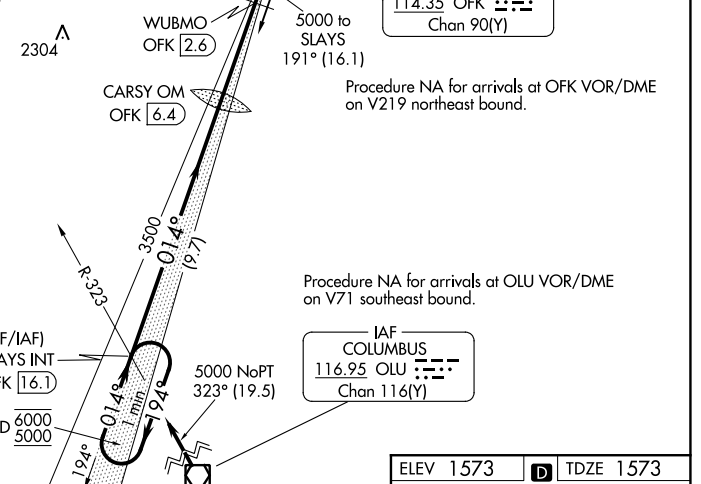
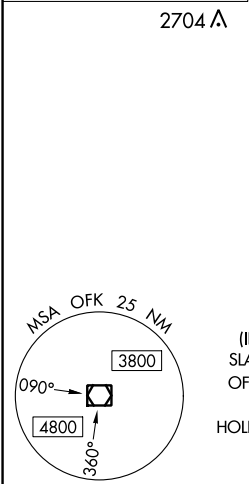
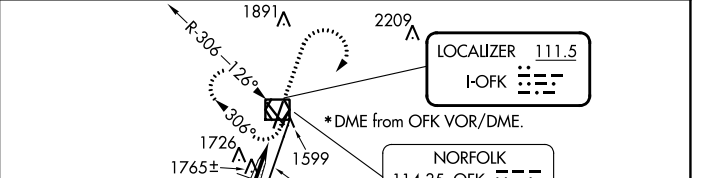
MALSRL

MISSED APPROACH: Climb to 3000 then climbing right turn to 4000 direct OFK VOR/DME and hold.

ASOS 119.025	MINNEAPOLIS CENTER 125.025 235.625	UNICOM 122.7 (CTAF) 1
------------------------	--	---------------------------------

ALTERNATE MISSED APCH FIX

COLUMBUS OLU
116.95
Chan 116(Y)



CATEGORY	A	B	C	D
S-ILS 2	1773-½ 200 (200-½)			
S-LOC 2	2240-½	667 (700-½)	2240-1½	667 (700-1½)
CIRCLING	2240-1	667 (700-1)	2260-2	2360-2½
			687 (700-2)	787 (800-2½)
WUBMO FIX MINIMUMS (DME REQUIRED)				
S-LOC 2	2020-½	447 (500-½)	2020-7/8	447 (500-7/8)
CIRCLING	2080-1	2100-1	2260-2	2360-2½
	507 (600-1)	527 (600-1)	687 (700-2)	787 (800-2½)

ILS or LOC RWY 2

NC-2, 05 SEP 2024 to 03 OCT 2024

NC-2, 05 SEP 2024 to 03 OCT 2024