

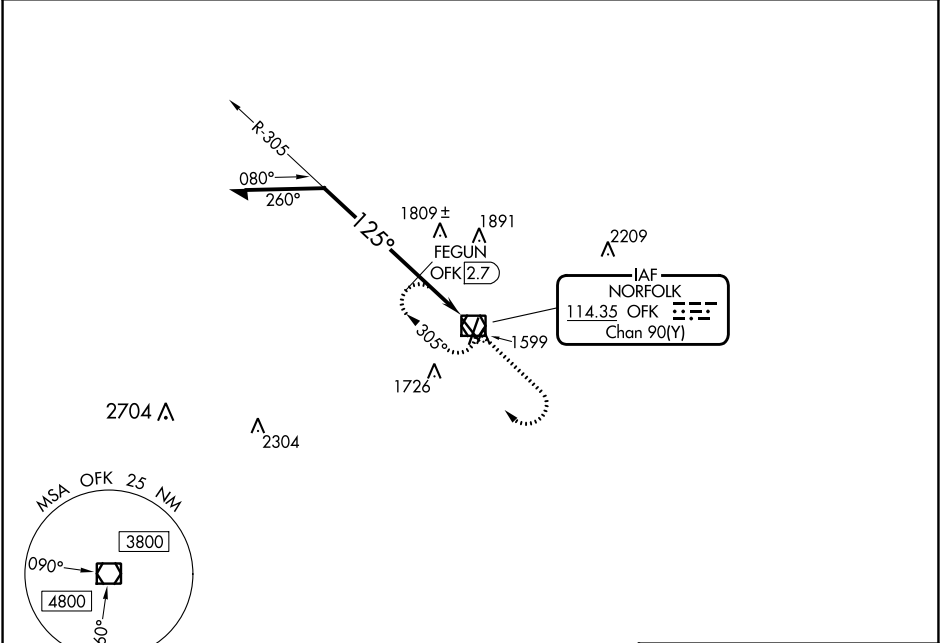
VOR/DME OFK 114.35 Chan 90(Y)	APP CRS 125°	Rwy Idg TDZE Apt Elev	5160 1543 1573
---	------------------------	-----------------------------	---

VOR RWY 14

NORFOLK RGNL/KARL STEFAN MEML FLD (OFK)

<p>▽ Rwy 14 helicopter visibility reduction below 3/4 SM NA.</p>	<p>MISSED APPROACH: Climb to 3400 then right turn direct OFK VOR/DME and hold.</p>
---	--

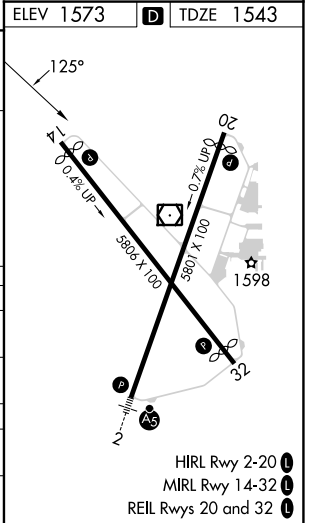
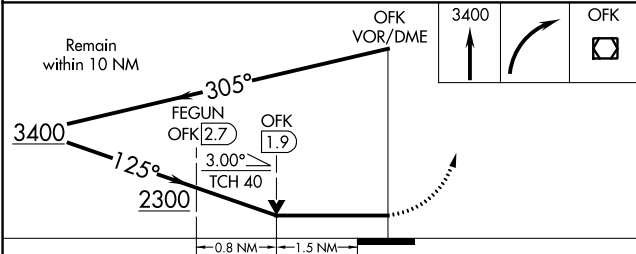
<p>ASOS 119.025</p>	<p>MINNEAPOLIS CENTER 125.025 235.625</p>	<p>UNICOM 122.7 (CTAF) 0</p>
--------------------------------	--	---



NC-2, 05 SEP 2024 to 03 OCT 2024

NC-2, 05 SEP 2024 to 03 OCT 2024

ELEV 1573	D	TDZE 1543
-----------	----------	-----------



CATEGORY	A	B	C	D
S-14	2300-1 757 (800-1)	2300-1¼ 757 (800-1¼)	2300-2	757 (800-2)
C CIRCLING	2300-1 727 (800-1)	2300-1¼ 727 (800-1¼)	2300-2	2360-2½ 787 (800-2½)
FEGUN FIX MINIMUMS (DME REQUIRED)				
S-14	2060-1	517 (500-1)	2060-1⅓	517 (500-1⅓)
C CIRCLING	2060-1 487 (500-1)	2100-1 527 (600-1)	2260-2 687 (700-2)	2360-2½ 787 (800-2½)

VOR RWY 14

HIRL Rwy 2-20 0
MIRL Rwy 14-32 0
REIL Rwys 20 and 32 0