

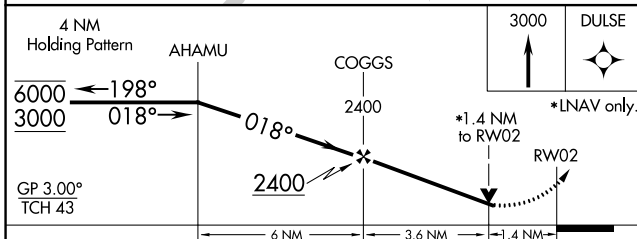
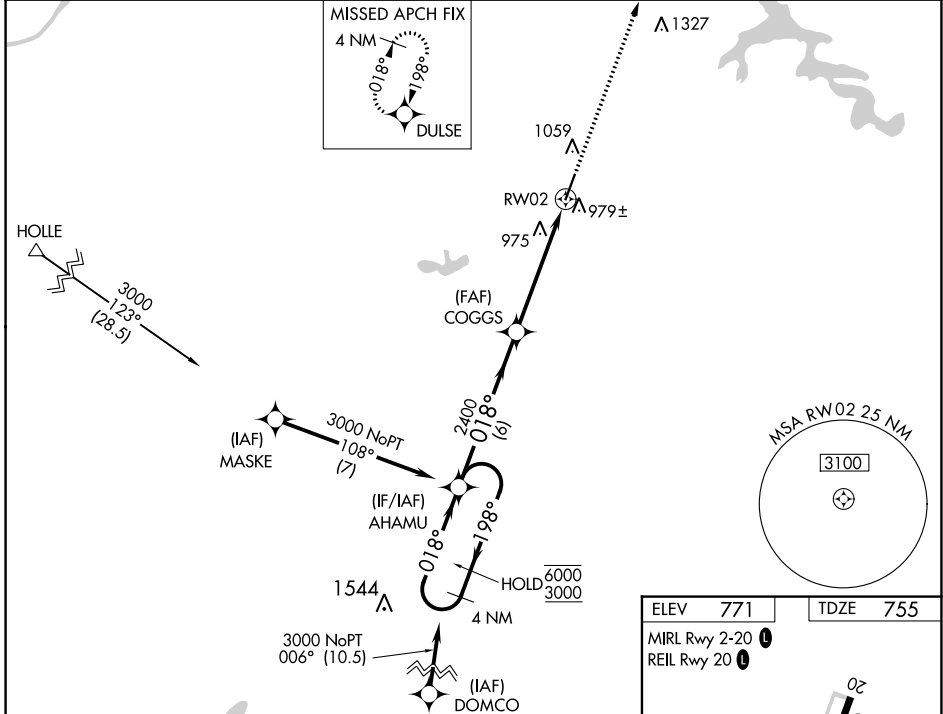
WAAS CH <b>50201</b> <b>W02A</b>	APP CRS <b>018°</b>	Rwy ldg <b>5602</b> TDZE <b>755</b> Apt Elev <b>771</b>
--	------------------------	---

# RNAV (GPS) RWY 2

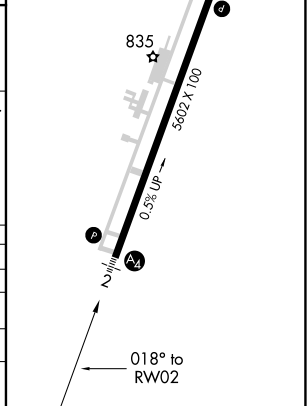
MC ALESTER RGNL (MLC)

RNP APCH.	MALS	MISSED APPROACH: Climb to 3000 direct DULSE and hold.
<p>▼ Rwy 2 helicopter visibility reduction below 3/4 SM NA.</p> <p>▲ For uncompensated Baro-VNAV systems, LNAV/VNAV NA below -13°C or above 54°C.</p>		

ASOS <b>120.425</b>	FORT WORTH CENTER <b>132.2 338.35</b>	UNICOM <b>122.95 (CTAF) ①</b>
------------------------	--	----------------------------------



ELEV <b>771</b>	TDZE <b>755</b>
MIRL Rwy 2-20 ①	REIL Rwy 20 ①



CATEGORY	A	B	C	D
LPV DA		1227-1 1/8	472 (500-1 1/8)	
LNAV/VNAV DA		1292-1 1/4	537 (600-1 1/4)	
LNAV MDA	1240-3/4	485 (500-3/4)	1240-1 1/8	485 (500-1 1/8)
① CIRCLING	1360-1	589 (600-1)	1360-1 1/2	1420-2 649 (700-2)

SC-1, 05 SEP 2024 to 03 OCT 2024

SC-1, 05 SEP 2024 to 03 OCT 2024