

LOC/DME I-MVP <b>111.55</b> Chan <b>52 (Y)</b>	APP CRS <b>196°</b>	Rwy ldg <b>7302</b> TDZE <b>1320</b> Apt Elev <b>1333</b>
--	------------------------	---

# ILS or LOC RWY 19L

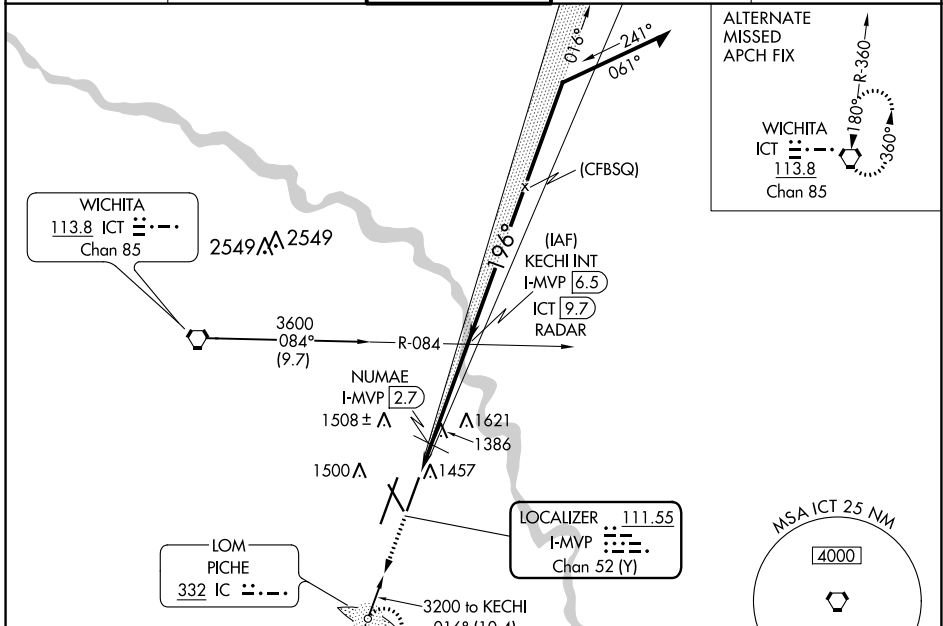
WICHITA DWIGHT D EISENHOWER NTL (ICT)

**⚠** ADF required. Simultaneous approach authorized with ILS or LOC RWY 19R. For inoperative MALSRL, increase S-ILS 19L Cat E visibility to ¾ mile, S-LOC 19L Cat E visibility to 1 ½ mile, NUMAE fix minimums: S-LOC 19L Cat C/D/E visibility to 1 mile.

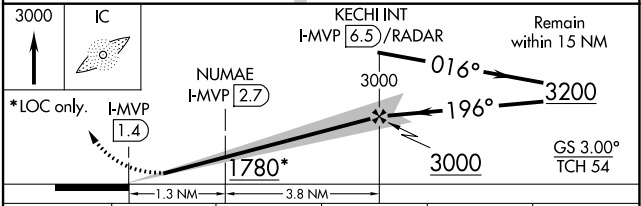
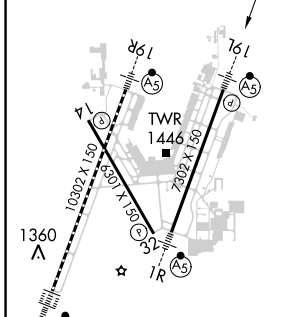
**MALSRL**

**MISSED APPROACH:** Climb to 3000 direct PICHE LOM and hold.

ATIS <b>125.15</b>	WICHITA APP CON <b>126.7 353.5</b>	WICHITA TOWER <b>118.2 257.8</b>	GND CON <b>121.9 348.6</b>	CLNC DEL <b>125.7</b>
-----------------------	---------------------------------------	-------------------------------------	-------------------------------	--------------------------



ELEV 1333	<b>D</b> TDZE 1320
-----------	--------------------



CATEGORY	A	B	C	D	E
S-ILS 19L	1520-½ 200 (200-½)				
S-LOC 19L	1780-½ 460 (500-½)	1780-⅞ 460 (500-⅞)			
<b>C</b> CIRCLING	1800-1 467 (500-1)	1980-1¾ 647 (700-1¾)	1980-2 647 (700-2)	2000-2¼ 667 (700-2¼)	2000-2¼ 667 (700-2¼)
NUMAE FIX MINIMUMS (DME REQUIRED)					
S-LOC 19L	1700-½ 380 (400-½)	1700-⅝ 380 (400-⅝)			
<b>C</b> CIRCLING	1800-1 467 (500-1)	1980-1¾ 647 (700-1¾)	1980-2 647 (700-2)	2000-2¼ 667 (700-2¼)	2000-2¼ 667 (700-2¼)

FAF to MAP 5.1 NM

Knots	60	90	120	150	180
Min:Sec	5:06	3:24	2:33	2:02	1:42

NC-2, 05 SEP 2024 to 03 OCT 2024

NC-2, 05 SEP 2024 to 03 OCT 2024