

VOR/DME GDM 116.95 Chan 116 (Y)	APP CRS 292°	Rwy Idg TDZE Apt Elev N/A N/A 556
---	------------------------	---

VOR-A

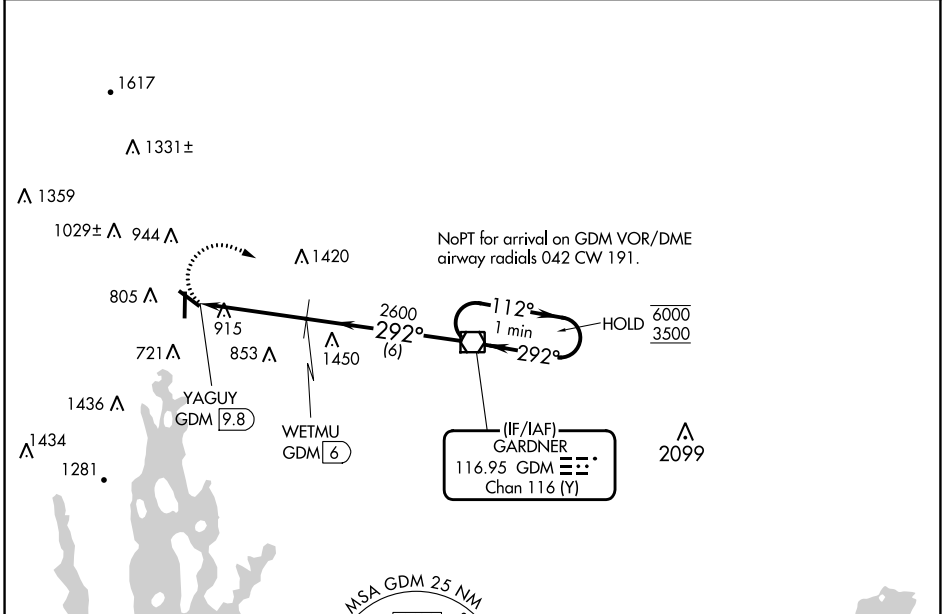
ORANGE MUNI(OR)E

DME required.

▼ Rwy 1, 19 helicopter visibility reduction below 1 SM NA. When local altimeter setting not received, use Keene altimeter setting and increase all MDAs 60 feet and Cat B visibility ¼ SM. Circling NA for Cats C/D to Rwys 14 and 32. Circling Rwy 1, 19 NA at night.

MISSED APPROACH: Climbing right turn to 3500 direct GDM VOR/DME and hold, continue climb-in-hold to 3500.

ASOS 135.675	BOSTON CENTER 123.75 338.2	UNICOM 122.8 (CTAF) 0
------------------------	--------------------------------------	---------------------------------



NE-1, 05 SEP 2024 to 03 OCT 2024

NE-1, 05 SEP 2024 to 03 OCT 2024

