

WAAS CH 93941 W26A	APP CRS 239°	Rwy Idg 7534 TDZE 32 Apt Elev 79
--	------------------------	---

RNAV (GPS) RWY 26

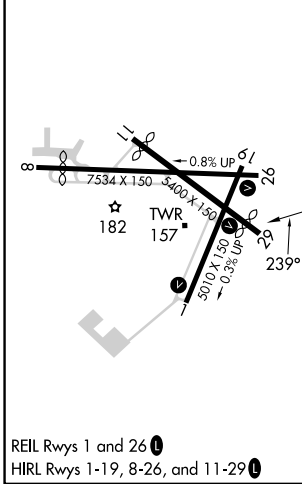
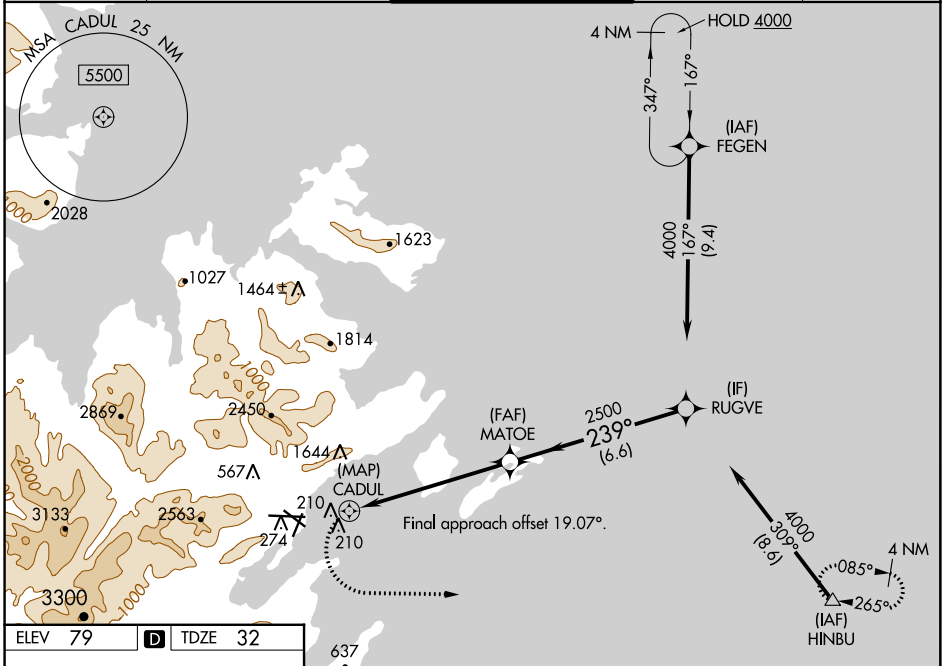
KODIAK (ADQ)(PADQ)

RNP APCH.

▼ Circling NA north of Rwy 8-26 and west of Rwy 1-19.
▲ Procedure NA at night. Circling to Rwy 8, 11 and 19 NA.
 Rapidly rising terrain north, west, and south of airport.

MISSED APPROACH: (Do not exceed 210K until HINBU)
 Climbing left turn to 4000 direct HINBU and hold, continue climb-in-hold to 4000. *Missed approach requires minimum climb of 357 feet per NM to 1500.

ATIS 134.45	ANCHORAGE CENTER 125.1 281.4	KODIAK TOWER * 119.8 (CTAF) 239.0	GND CON 121.9	UNICOM 122.8
-----------------------	--	---	-------------------------	------------------------



4000 HINBU	VGSi and descent angles not coincident (VGSi Angle 2.05/TCH 54).			
CADUL		MATOE	RUGVE	
1.6 NM		6 NM	6.6 NM	
2500	239°		4000	
≤ 3.03° TCH 38				
CATEGORY	A	B	C	D
LP MDA	560-1 $\frac{7}{8}$		528 (500-1 $\frac{7}{8}$)	
LNAV MDA*	560-1 $\frac{7}{8}$		528 (500-1 $\frac{7}{8}$)	
LNAV MDA	940-1 $\frac{7}{8}$	908 (900-1 $\frac{7}{8}$)	940-2 $\frac{1}{2}$	908 (900-2 $\frac{1}{2}$)
C CIRCLING	940-1 $\frac{7}{8}$	861 (900-1 $\frac{7}{8}$)	1140-3 1060 (1100-3)	2020-3 1941 (2000-3)

AK, 05 SEP 2024 to 31 OCT 2024

AK, 05 SEP 2024 to 31 OCT 2024