

# ILS or LOC RWY 7L

TED STEVENS ANCHORAGE INTL (ANC)(PANC)

LOC/DME I-TGN <b>109.9</b> Chan <b>36</b>	APP CRS <b>074°</b>	Rwy Idg <b>10600</b> TDZE <b>128</b> Apt Elev <b>151</b>
---	------------------------	--

DME required.

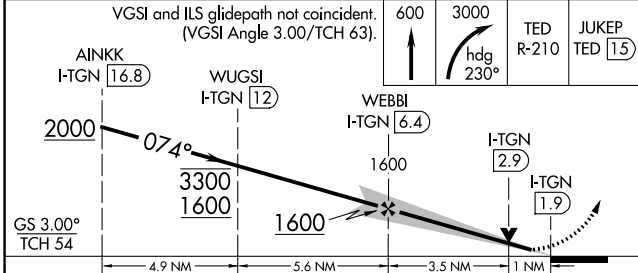
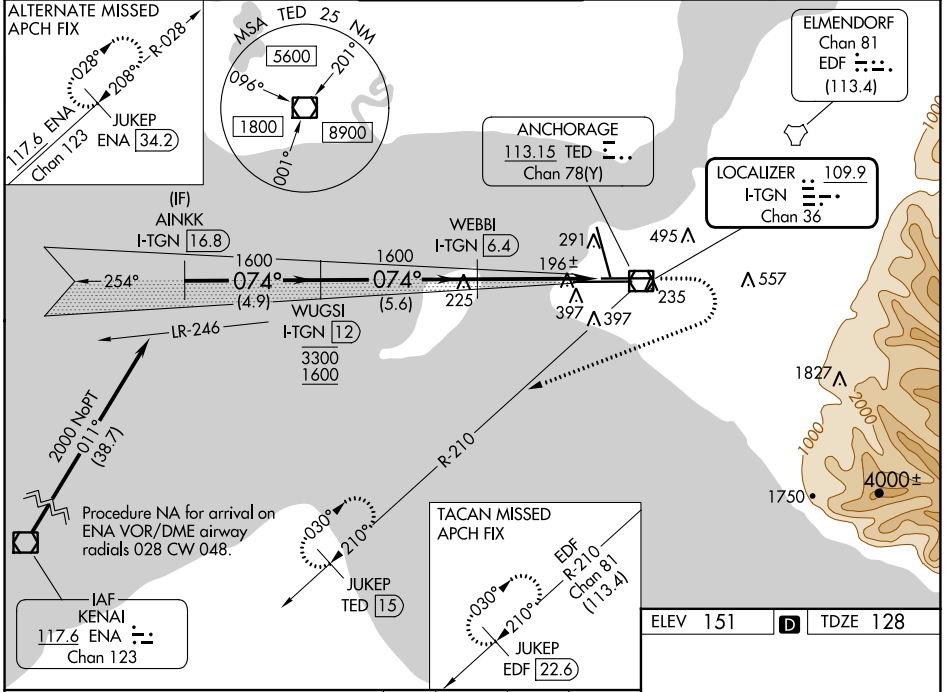
**⚠** For inop ALS, increase S-ILS 7L Cat E visibility to RVR 4000, S-LOC 7L Cats C, D and E visibility to RVR 5500.

**❄** -21°C

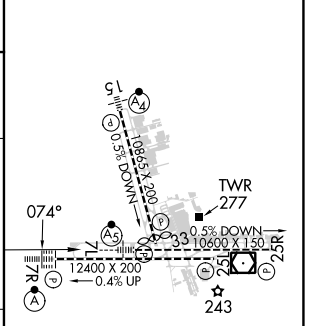
**MALSR**

**MISSED APPROACH:** Climb to 600 then climbing right turn to 3000 on heading 230° and TED VOR/DME R-210 to JUKEP/TED 15 DME and hold. (TACAN aircraft climb to 600 then climbing right turn to 3000 on heading 230° on EDF TACAN R-210 to JUKEP/EDF 22.6 DME and hold).

D-ATIS <b>135.5</b>	ANCHORAGE APP CON <b>118.6 290.5</b>	ANCHORAGE TOWER <b>118.3 257.8</b>	GND CON <b>121.9 338.25</b>	CLNC DEL <b>119.4 323.1</b>
------------------------	---	---------------------------------------	--------------------------------	--------------------------------



ELEV 151	<b>D</b>	TDZE 128
----------	----------	----------



CATEGORY	A	B	C	D	E
S-ILS 7L	328/18 200 (200-½)				
S-LOC 7L	500/24	372 (400-½)	500/30 372 (400-¾)		
<b>C</b> CIRCLING	700-1	549 (600-1)	800-1¾ 649 (700-1¾)	920-2½ 769 (800-2½)	920-2¾ 769 (800-2¾)

REIL Rwy 33  
TDZ/CL Rwys 7L and 7R  
HIRL all Rwys

# ILS or LOC RWY 7L

AK, 05 SEP 2024 to 31 OCT 2024

AK, 05 SEP 2024 to 31 OCT 2024