

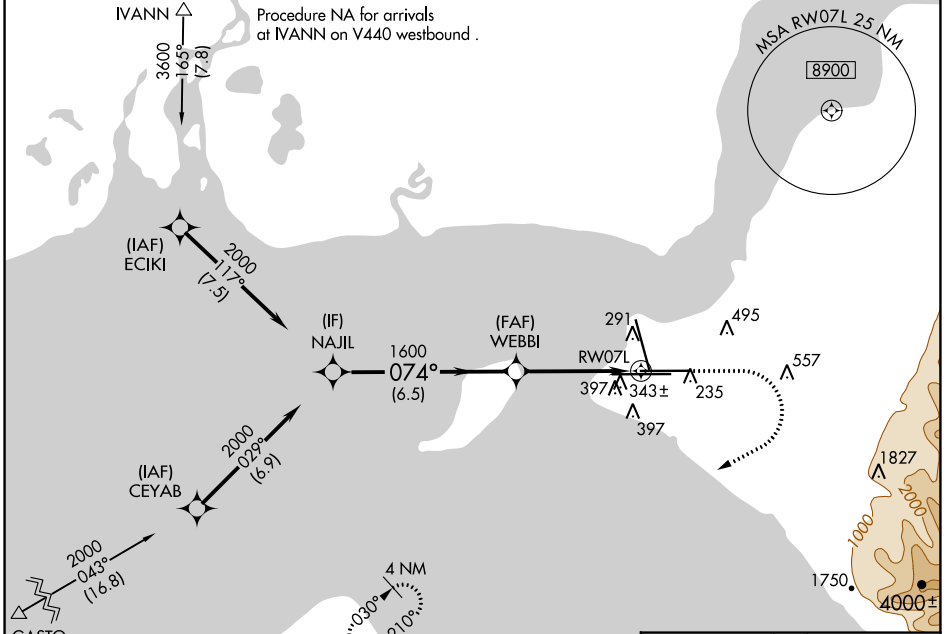
WAAS CH 86215 W07B	APP CRS 074°	Rwy Idg 10600 TDZE 128 Apt Elev 151
--	------------------------	--

RNAV (GPS) RWY 7L

TED STEVENS ANCHORAGE INTL (ANC) (PANC)

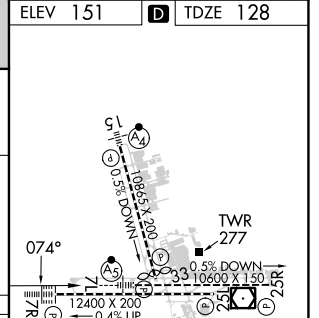
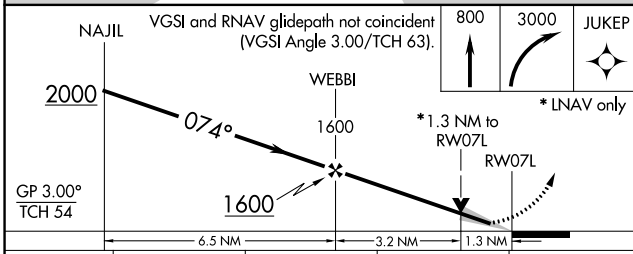
RNP APCH. ▼ ▲ -21°C	For uncompensated Baro-VNAV systems, LNAV/VNAV NA below -18°C or above 54°C. For inop ALS, increase LNAV/VNAV all Cats and LNAV Cat C/D visibility to 1 3/8 SM.	MALSR Ⓜ Ⓜ	MISSED APPROACH: Climb to 800 then climbing right turn to 3000 direct JUKEP and hold.
------------------------------	---	-----------------	---

D-ATIS 135.5	ANCHORAGE APP CON 118.6 290.5	ANCHORAGE TOWER 118.3 257.8	GND CON 121.9 338.25	CLNC DEL 119.4 323.1
------------------------	---	---------------------------------------	--------------------------------	--------------------------------



Procedure NA for arrivals at IVANN on V440 westbound.

Procedure NA for arrivals at GASTO on V462 southwest bound.



CATEGORY	A	B	C	D
LPV DA	328/18		200 (200-1/2)	
LNAV/VNAV DA	595/50		467 (500-1)	
LNAV MDA	600/24 472 (500-1/2)		600/50 472 (500-1)	
CIRCLING	700-1 549 (600-1)		800-1 3/4 649 (700-1 3/4) 920-2 1/2 769 (800-2 1/2)	

REIL Rwy 33
TDZ/CL Rwsy 7L and 7R
HIRL all Rwsy

AK, 05 SEP 2024 to 31 OCT 2024

AK, 05 SEP 2024 to 31 OCT 2024