

FAIRBANKS, ALASKA

ILS Z or LOC/DME Z RWY 32

LOC I-EAF 109.9	APCH CRS 320°	Rwy Idg 14, 530 TDZE 548 Arprt Elev 548
---------------------------	-------------------------	--

AL-1729 [USAF]

EIELSON AFB (PAEI)

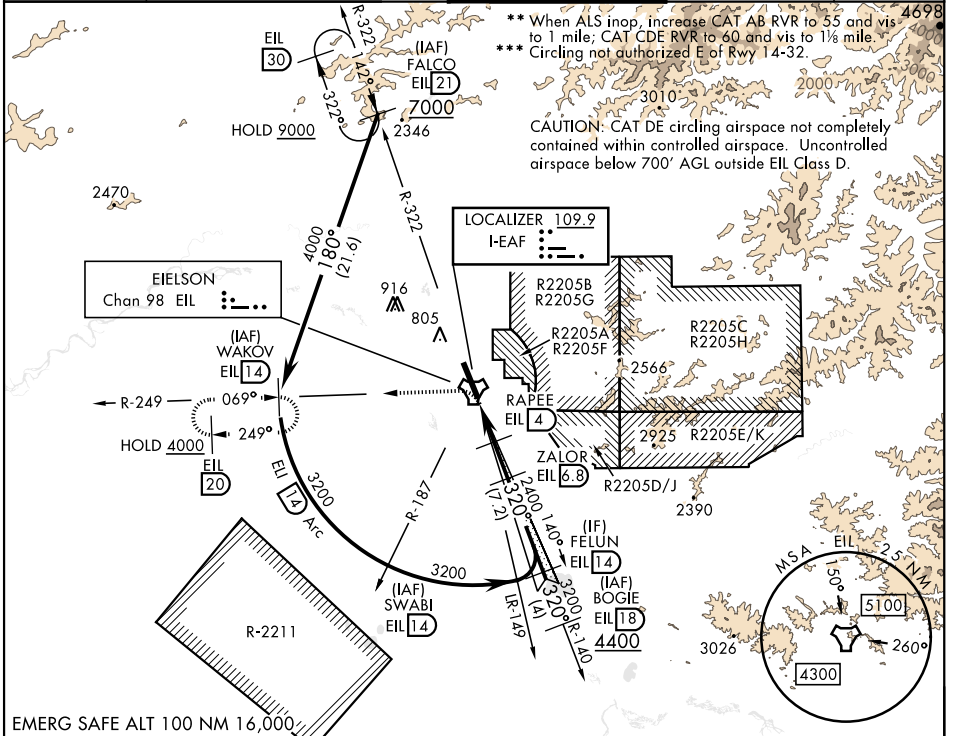
DME or RADAR required. RADAR required between FALCO-WAKOV



MISSED APPROACH: Climbing left turn on EIL R-249 to 4000 to WAKOV and hold. Continue climb in hold.

▼ * When ALS inop, increase RVR to 40 and vis to 3/8 mile.

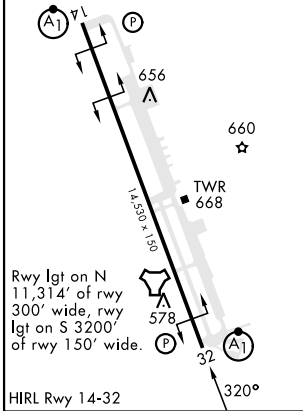
ATIS ★ 119.9 273.5	FAIRBANKS APP CON 127.1 251.1 360° - 179° 125.35 363.2 180° - 359°	TOWER ★ 127.2 352.05	GND CON 121.8 275.8	CLNC DEL 343.7
------------------------------	--	--------------------------------	-------------------------------	--------------------------



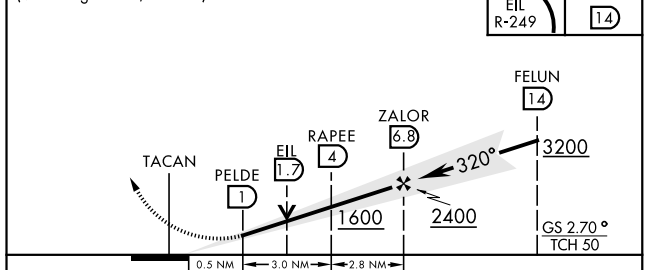
AK, 05 SEP 2024 to 31 OCT 2024

AK, 05 SEP 2024 to 31 OCT 2024

EMERG SAFE ALT 100 NM 16,000



VGSI and ILS glidepath not coincident (VGSI angle 2.70/TCH 44)



CATEGORY	A	B	C	D	E
S-ILS 32*	748/24 200 (200-1/2)				
S-LOC 32**	960/24	412 (500-1/2)	960/40	412 (500-3/4)	
CIRCLING***	1000-1 452 (500-1)	1040-1 492 (500-1)	1040-1 1/2 492 (500-1 1/2)	1280-2 1/4 732 (800-2 1/4)	1280-2 1/2 732 (800-2 1/2)

FAIRBANKS, ALASKA

64° 40' N - 147° 06' W

EIELSON AFB (PAEI)

Orig 15JUN23

ILS Z or LOC/DME Z RWY 32