

FAIRBANKS, ALASKA

RNAV (GPS) RWY 14

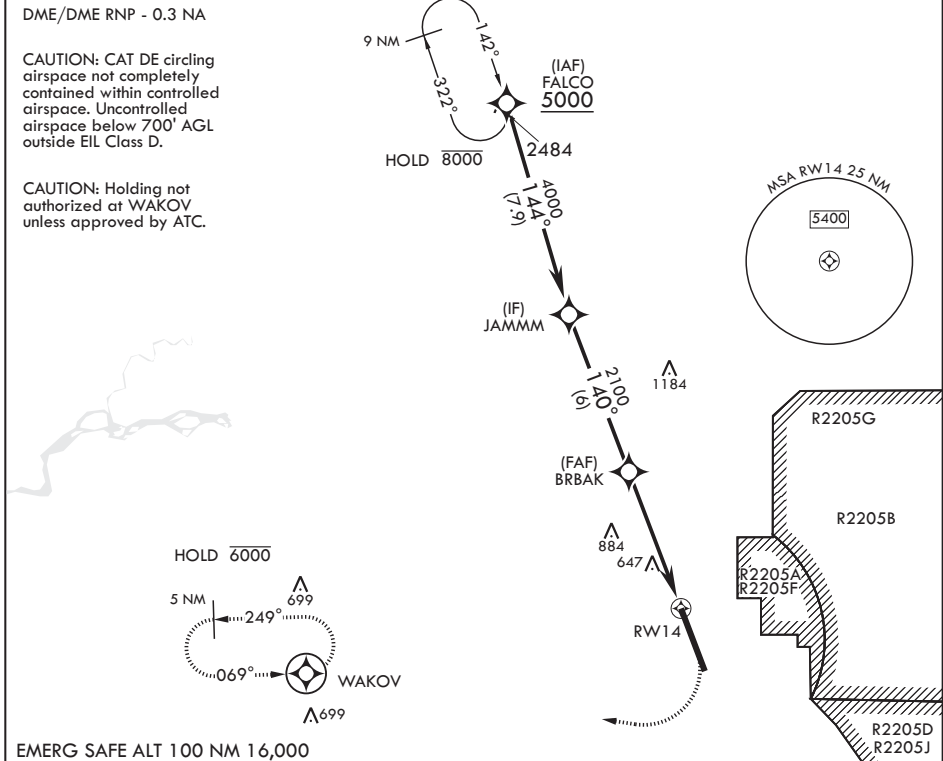
APCH CRS	Rwy Idg	14,530
140°	TDZE	537
	Arpt Elev	548

AL-1729 (USAF)

EIELSON AFB (PAEI)

<p>▼ * When ALS inop, increase RVR to 55 and vis to 1 mile. ** Circling not authorized E Rwy 14-32.</p>	<p>ALSF-1</p>	<p>MISSED APPROACH: Climb to 1100 then climbing right turn to 4000 direct WAKOV and hold, continue climb-in-hold to 4000.</p>

<p>ATIS*</p> <p>119.9 273.5</p>	<p>FAIRBANKS APP CON</p> <p>125.35 363.2 180°-359°</p> <p>127.1 251.1 360°-179°</p>	<p>TOWER*</p> <p>127.2 352.05</p>	<p>GND CON</p> <p>121.8 275.8</p>	<p>CLNC DEL</p> <p>343.7</p>
---------------------------------	---	-----------------------------------	-----------------------------------	------------------------------



<p>FALCO</p> <p>5000</p>	<p>JAMMM</p> <p>4000</p>	<p>BRBAK</p> <p>2100</p>	<p>1.4 NM to RWY14</p> <p>2.73' ≥ TCH 54</p> <p>5.2 NM</p>	<p>RWY14</p>	<p>1100</p> <p>4000</p> <p>WAKOV</p> <p>ELEV 548</p> <p>TDZE 537</p>
<p>140° to RWY14</p> <p>Rwy lgt on S 3200' of rwy 150' wide.</p> <p>Rwy lgt on N 11,314' of rwy 300' wide.</p> <p>BCN 660</p> <p>TWR 668</p>					<p>140° to RWY14</p> <p>14,530 x 150</p> <p>32</p> <p>728</p> <p>659</p> <p>HIRL all Rwys</p>
<p>CATEGORY</p>	A	B	C	D	E
<p>LNAV MDA*</p>	1000/24	463 (500-½)	1000/50	463	(500-1)
<p>☐ CIRCLING**</p>	1000-1 452 (500-1)	1040-1 492 (500-1)	1040-1½ 492 (500-1½)	1280-2¼ 732 (800-2¼)	1280-2½ 732 (800-2½)

FAIRBANKS, ALASKA
Amdt 6 17JUN21
TERPS

64°40'N - 147°06'W

EIELSON AFB (PAEI)

RNAV (GPS) RWY 14

AK, 05 SEP 2024 to 31 OCT 2024

AK, 05 SEP 2024 to 31 OCT 2024