

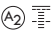
YIGO, GUAM I, GUAM

RNAV (GPS) RWY 24L

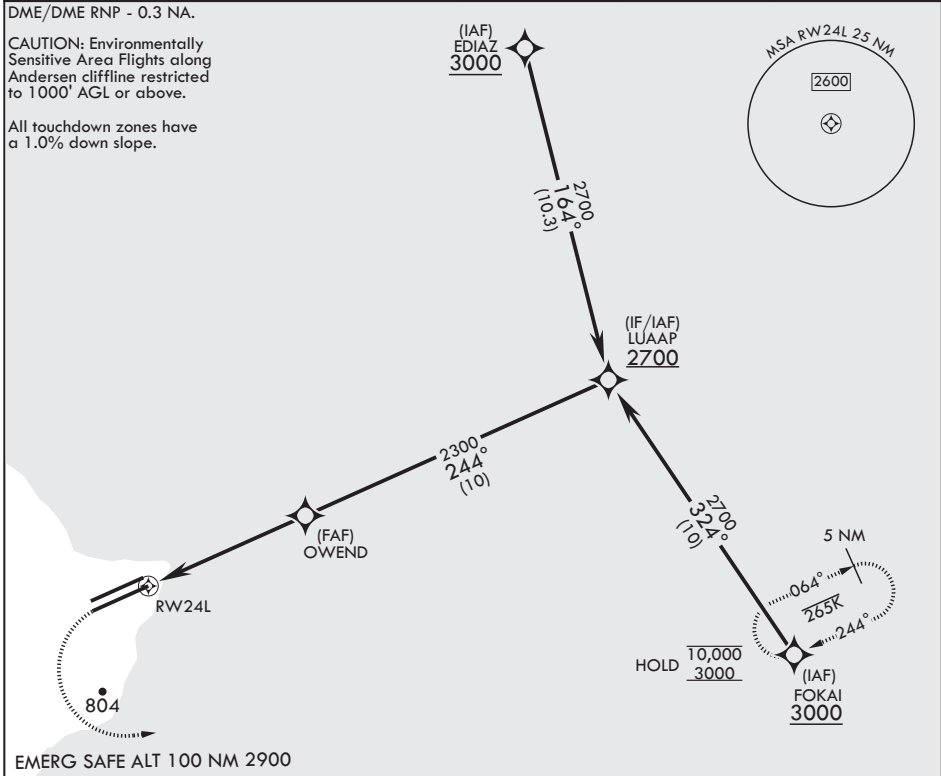
APCH CRS 244°	Rwy Idg TDZE Arprt Elev	11,200 607 617
-------------------------	-------------------------------	---



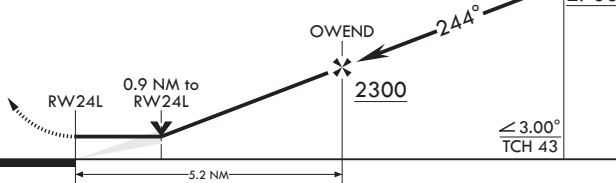
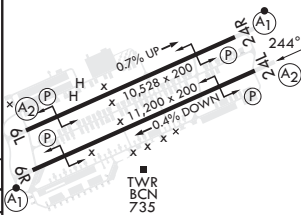

- (USAF)

ANDERSEN AFB (PGUA)

RNP APCH	SALS 	MISSED APPROACH: Climb to 1200, then climbing left turn to 3000 direct FOKAI and hold.
<p>▼ * When ALS inop, increase CAT AB RVR to 55, vis to 1 mile; CAT CDE RVR to 50, vis to 1 mile. ** Circling not authorized NW of Rwy 06L-24R.</p>		

ATIS 118.175 254.325	GUAM APP CON/DEP CON 119.8 269.0	TOWER 126.2 233.7	GND CON 121.7 275.8	CLNC DEL 126.725 256.7
--------------------------------	--	-----------------------------	-------------------------------	----------------------------------



 	LUAAP 2700		ELEV 617	TDZE 607	
	OWEND 2300				
CATEGORY	A	B	C	D	E
LNAV MDA*	940/40	333 (400-¾)	940/45	333	(400-¾)
 CIRCLING**	1060-1 443 (500-1)	1080-1 463 (500-1)	1240-1¾ 623 (700-1¾)	1240-2 623 (700-2)	1240-2¼ 623 (700-2¼)
HIRL all Rwys					

YIGO, GUAM I, GUAM

13°35'N - 144°56'E

ANDERSEN AFB (PGUA)

Amdt 1 17JUN21
TERPS

RNAV (GPS) RWY 24L

PAC, 05 SEP 2024 to 31 OCT 2024

PAC, 05 SEP 2024 to 31 OCT 2024