

YIGO, GUAM I, GUAM

# RNAV (GPS) RWY 06R

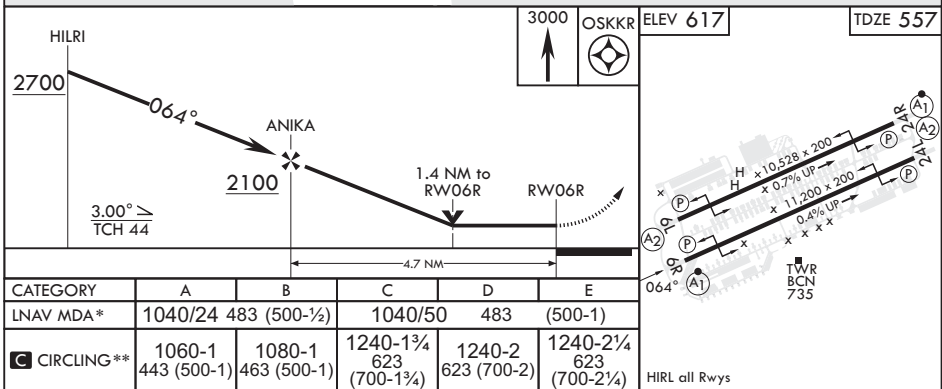
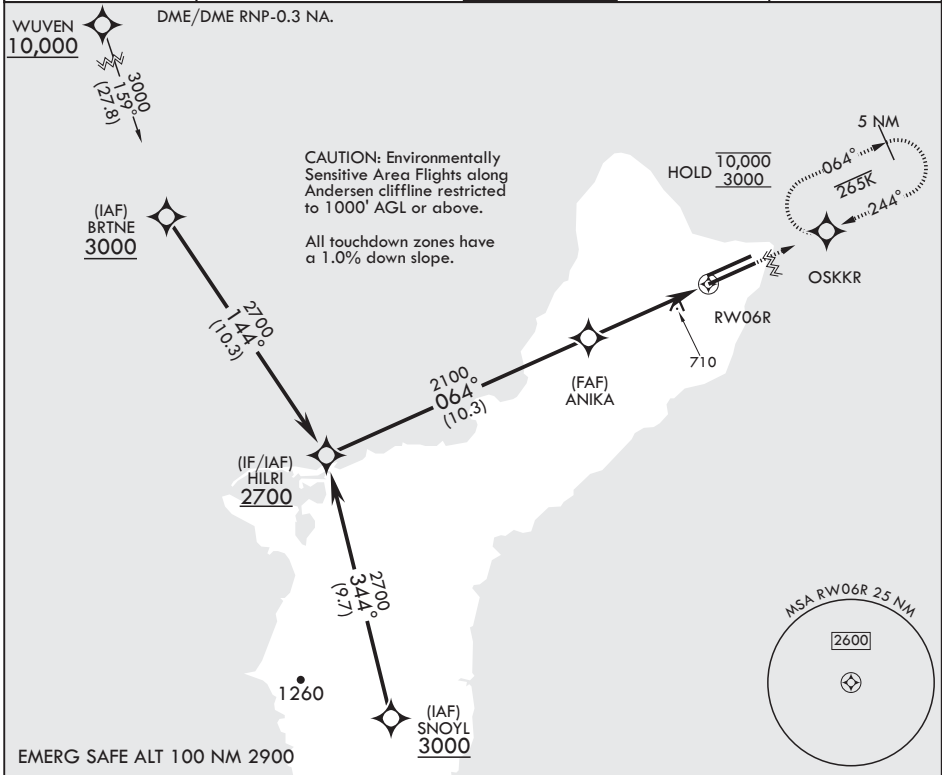
APCH CRS	Rwy Idg	11,200
064°	TDZE	557
	Arprt Elev	617

- (USAF)

ANDERSEN AFB (PGUA)

RNP APCH	ALSIF-1	MISSED APPROACH: Climb to 3000 direct OSKKR and hold.
<p>▼ * When ALS inop, increase CAT AB RVR to 55, vis to 1 mile; CAT CDE vis to 1 3/8 miles. ** Circling not authorized NW of Rwy 6L-24R.</p>		

ATIS	GUAM APP CON/DEP CON	TOWER	GND CON	CLNC DEL
118.175 254.325	119.8 269.0	126.2 233.7	121.7 275.8	126.725 256.7



YIGO, GUAM I, GUAM

13°35'N - 144°56'E

ANDERSEN AFB (PGUA)

Amdt 1 17JUN21  
TERPS

# RNAV (GPS) RWY 06R

PAC, 05 SEP 2024 to 31 OCT 2024

PAC, 05 SEP 2024 to 31 OCT 2024