

YIGO, GUAM I, GUAM

TACAN Y RWY 24R

VORTAC UNZ 115.8 Chan T05	APCH CRS 234°	Rwy ldg 10,528 TDZE 617 Arprt Elev 617
---	-------------------------	---

- (USAF)

ANDERSEN AFB (PGUA)

RNAV or RADAR required for missed approach

ALSF-1

MISSED APPROACH: Climb to 1100, then climbing left turn to intercept UNZ R-054 to MDBUG and hold.

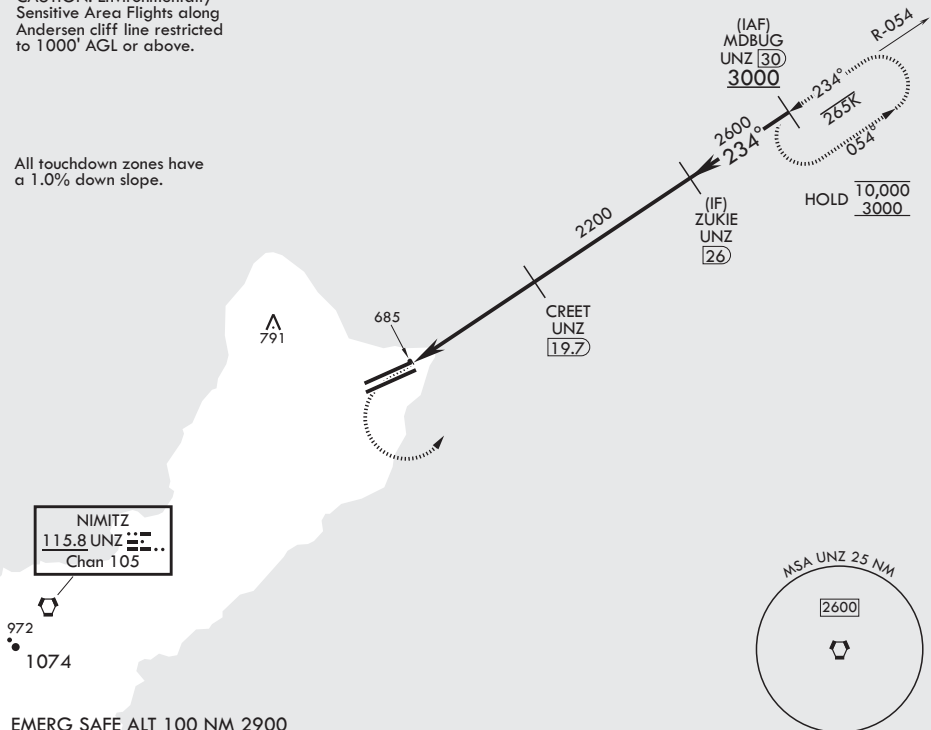
▼ * When ALS inop increase CAT AB RVR to 55, vis to 1 mile; CAT CDE RVR to 50, vis to 1 mile.
 ** Circling not authorized NW of Rwy 06L-24R.



ATIS 118.175 254.325	GUAM APP CON/DEP CON 119.8 269.0	TOWER 126.2 233.7	GND CON 121.7 275.8	CLNC DEL 126.725 256.7
--------------------------------	--	-----------------------------	-------------------------------	----------------------------------

CAUTION: Environmentally Sensitive Area Flights along Andersen cliff line restricted to 1000' AGL or above.

All touchdown zones have a 1.0% down slope.

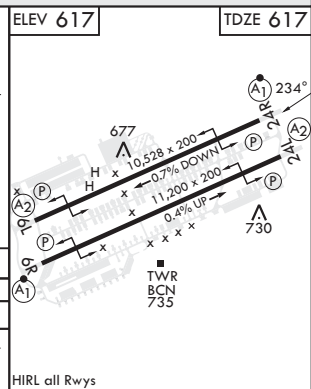
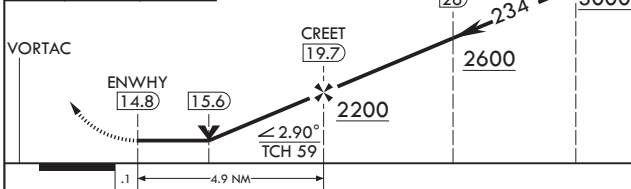


PAC, 05 SEP 2024 to 31 OCT 2024

PAC, 05 SEP 2024 to 31 OCT 2024

EMERG SAFE ALT 100 NM 2900

1100	3000	MDBUG UNZ 30	ELEV 617	TDZE 617
------	------	--------------	----------	----------



CATEGORY	A	B	C	D	E
S-24R*	940/24 323 (400-½)		940/40 323 (400-¾)		
CIRCLING**	1060-1 443 (500-1)	1080-1 463 (500-1)	1240-1¾ 623 (700-1¾)	1240-2 623 (700-2)	1240-2¼ 623 (700-2¼)

HIRL all Rwy's

YIGO, GUAM I, GUAM

13°35'N - 144°56'E

ANDERSEN AFB (PGUA)

Amdt 3 10AUG23
TERPS

TACAN Y RWY 24R