

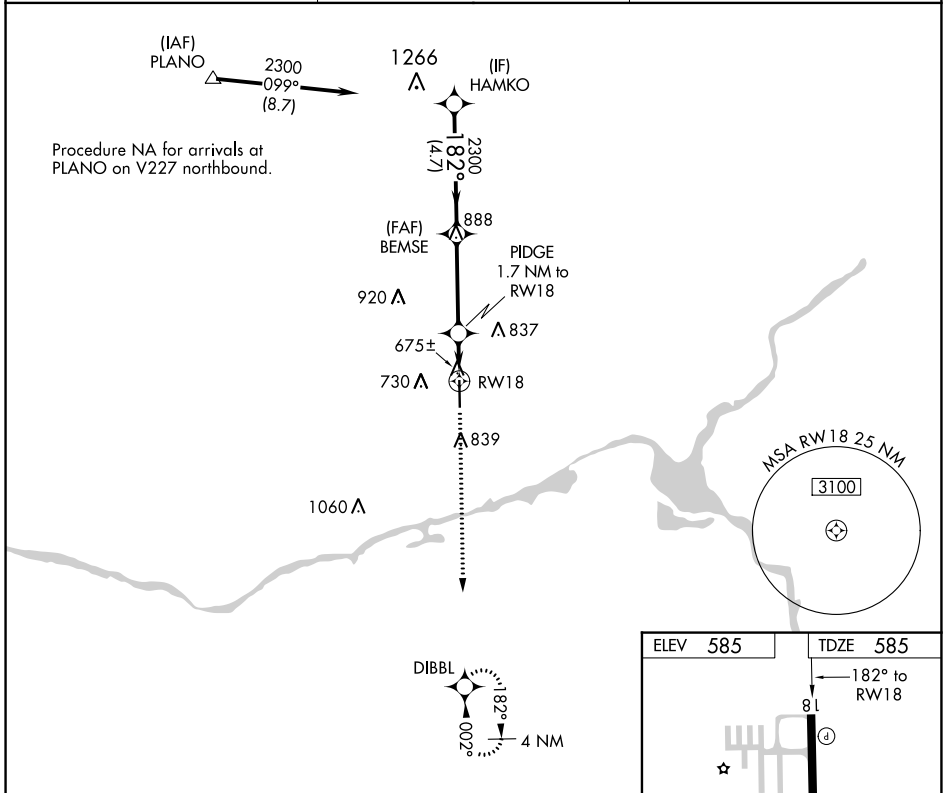
APP CRS	Rwy Idg	5501
182°	TDZE	585
	Apt Elev	585

RNAV (GPS) RWY 18

MORRIS MUNI-JAMES R WASHBURN FLD (C09)

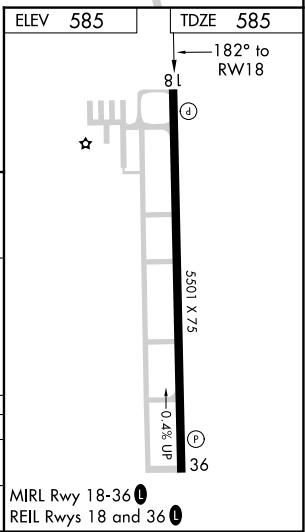
RNP APCH.	Rwy 18 helicopter visibility reduction below 1 SM NA. When local altimeter setting not received, use Joliet altimeter setting and increase all MDA 40 feet, and increase LNAV Cat C visibility 1/8 mile. Straight-in, Circling Rwy 18 NA at night.	MISSED APPROACH: Climb to 2200 direct DIBBL and hold.
-----------	--	---

AWOS-3 118.175	CHICAGO APP CON 119.35 354.075	UNICOM 122.8 (CTAF) 0
--------------------------	--	---------------------------------



VGSI and descent angles not coincident (VGSI Angle 3.00/TCH 44).

	HAMKO	BEMSE	PIDGE 1.7 NM to RW18	RW18
	2300	2300	1160	
	4.7 NM	3.6 NM	1.7 NM	
CATEGORY	A	B	C	D
LNAV MDA	940-1 355 (400-1)			NA
C CIRCLING	980-1 395 (400-1)	1140-1 555 (600-1)	1140-1 1/2 555 (600-1 1/2)	NA



EC-3, 05 SEP 2024 to 03 OCT 2024

EC-3, 05 SEP 2024 to 03 OCT 2024