

LOC I-FKL <b>110.5</b>	APP CRS <b>207°</b>	Rwy ldg TDZE <b>5200</b> <b>1540</b>	Apt Elev <b>1540</b>
---------------------------	------------------------	--	-------------------------

# ILS or LOC RWY 21

VENANGO RGNL (F'KL)

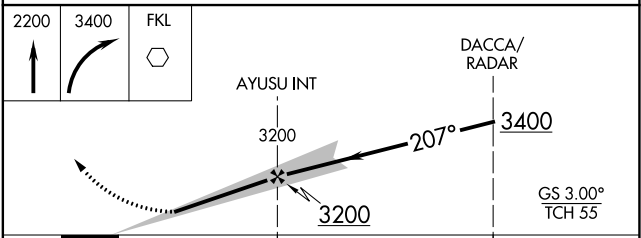
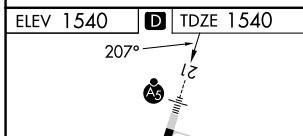
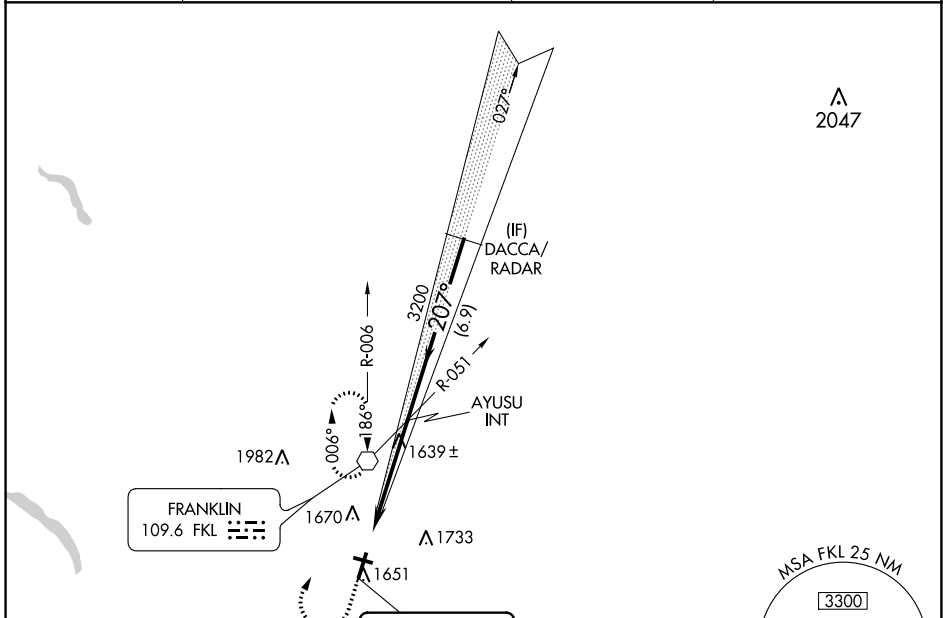
RADAR required to define DACCA.  
RADAR required for procedure entry.

**MALS**  
AS

MISSED APPROACH: Climb to 2200 then climbing right turn to 3400 direct FKL VOR and hold, continue climb-in-hold to 3400.

**⚠** For inop ALS, increase S-LOC 21 Cat C/D visibility to 1 SM.  
**⚠** Circling Rwy 12 NA at night.

AWOS-3PT <b>118.175</b>	YOUNGSTOWN APP CON ★ <b>126.25 322.3</b>	CLNC DEL <b>126.25</b>	UNICOM <b>122.7 (CTAF)</b> <b>⓪</b>
----------------------------	---	---------------------------	--



ELEV 1540	<b>D</b>	TDZE 1540			
MIRL Rwy 12-30 <b>⓪</b> HIRL Rwy 3-21 <b>⓪</b>					
FAF to MAP 5 NM					
Knots	60	90	120	150	180
Min:Sec	5:00	3:20	2:30	2:00	1:40

CATEGORY	A	B	C	D
S-ILS-21	1740-½ 200 (200-½)			
S-LOC-21	1900-½ 360 (400-½)	1900-⅝ 360 (400-⅝)		
CIRCLING	1960-1 420 (500-1)	2000-1 460 (500-1)	2040-1½ 500 (500-1½)	2100-2 560 (600-2)

NE-4, 05 SEP 2024 to 03 OCT 2024

NE-4, 05 SEP 2024 to 03 OCT 2024