

# RNAV (GPS) RWY 3

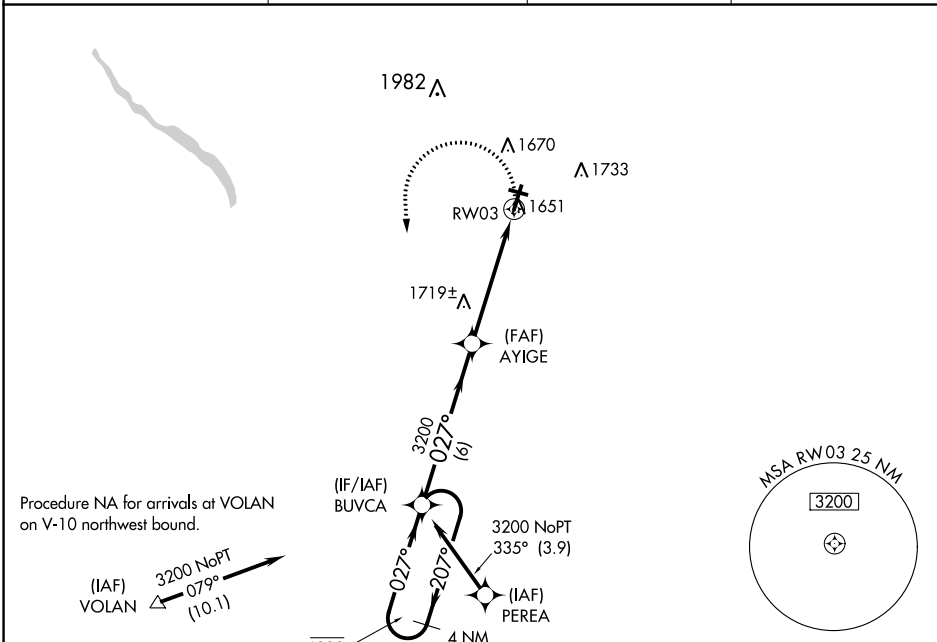
VENANGO RGNL (FKL)

APP CRS <b>027°</b>	Rwy Idg <b>5200</b>
	TDZE <b>1539</b>
	Apt Elev <b>1540</b>

RNP APCH.  
 ▼ Rwy 3 helicopter visibility reduction below 3/4 SM NA.  
 ▲ Circling Rwy 12 NA at night.

MISSED APPROACH: Climbing left turn to 3200 direct BUVCA and hold.

AWOS-3PT <b>118.175</b>	YOUNGSTOWN APP CON ★ <b>126.25 322.3</b>	CLNC DEL <b>126.25</b>	UNICOM <b>122.7</b> (CTAF) <b>1</b>
----------------------------	---	---------------------------	--



NE-4, 05 SEP 2024 to 03 OCT 2024

NE-4, 05 SEP 2024 to 03 OCT 2024

4 NM Holding Pattern		Visual Segment-Obstacles.		3200	BUVCA
CATEGORY	A	B	C	D	
LNAV MDA	1980-1	441 (500-1)	1980-1 3/8	441 (500-1 3/8)	
CIRCLING	1980-1 440 (500-1)	2000-1 460 (500-1)	2040-1 1/2 500 (500-1 1/2)	2100-2 560 (600-2)	

