

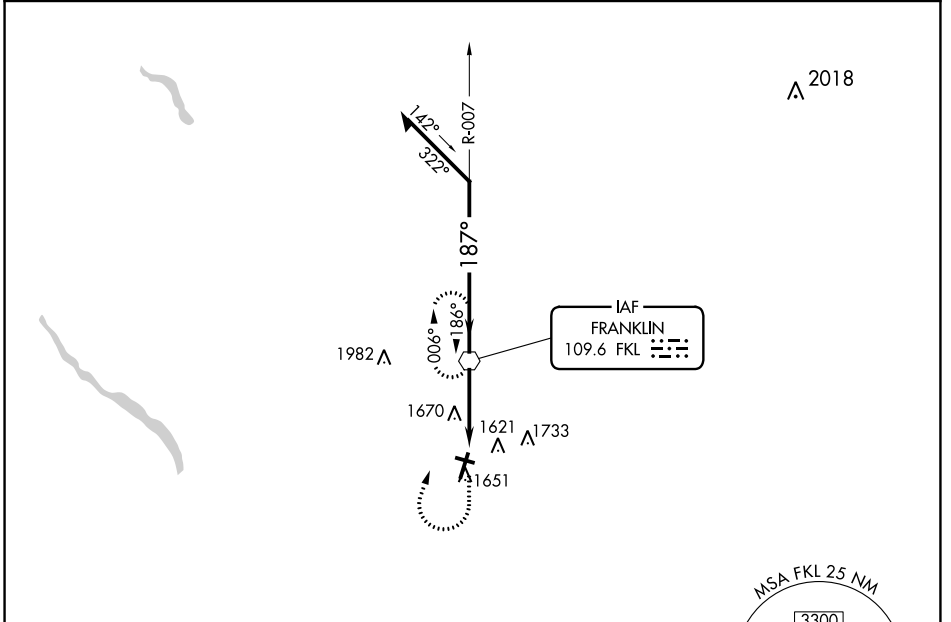
VOR FKL 109.6	APP CRS 187°	Rwy ldg TDZE 1540 Apt Elev 1540
-------------------------	------------------------	---

VOR RWY 21

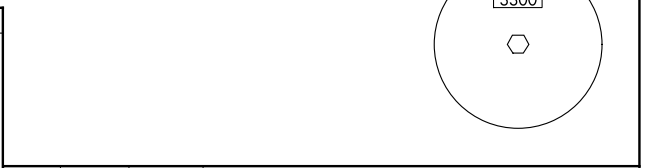
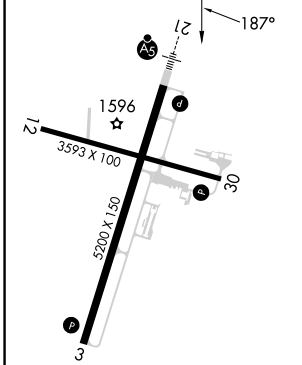
VENANGO RGNL (F'KL)

<p>Inop table does not apply. When local altimeter setting not received, use Port Meadville altimeter setting and increase all MDA 80 feet and S-21 Cats C/D visibility 3/8 mile. Circling Rwy 12 NA at night. Rwy 12 helicopter visibility reduction below 1 SM NA.</p>	<p>MALS R</p>	<p>MISSED APPROACH: Climb to 2200, then climbing right turn to 3300 direct FKL VOR and hold.</p>	
			<p>AWOS-3PT 118.175</p>

AWOS-3PT 118.175	YOUNGSTOWN APP CON ★ 126.25 322.3	CLNC DEL 126.25	UNICOM 122.7 (CTAF)
----------------------------	---	---------------------------	-------------------------------



ELEV 1540		TDZE 1540
-----------	--	-----------



2200	3300	FKL	Remain within 10 NM			
			FKL VOR	007°	187°	3200
				3.13°	TCH 57	2700
			3.3 NM			
CATEGORY	A	B	C	D		
S-21	1920-1 380 (400-1)					
CIRCLING	1960-1 420 (500-1)	2000-1 460 (500-1)	2040-1½ 500 (500-1½)	2100-2 560 (600-2)		

FAF to MAP 3.3 NM					
Knots	60	90	120	150	180
Min:Sec	3:18	2:12	1:39	1:19	1:06

MIRL Rwy 12-30
HIRL Rwy 3-21

NE-4, 05 SEP 2024 to 03 OCT 2024

NE-4, 05 SEP 2024 to 03 OCT 2024