

| | | | |
|--|------------------------|-----------------------------|---|
| WAAS CH 62803 W10A | APP CRS 096° | Rwy Idg TDZE Apt Elev | 4199 673 673 |
|--|------------------------|-----------------------------|---|

RNAV (GPS) RWY 10

WOOD COUNTY (1G4)

RNP APCH.

- Circling Rwy 36 NA at night. VDP NA when using Toledo Express altimeter setting.
- NA When local altimeter setting not received, use Toledo Express altimeter setting; increase DA to 974 feet; increase all MDA 40 feet and LNAV Cat C visibility 1/4 SM, Circling Cat C/D visibility 1/4 SM.

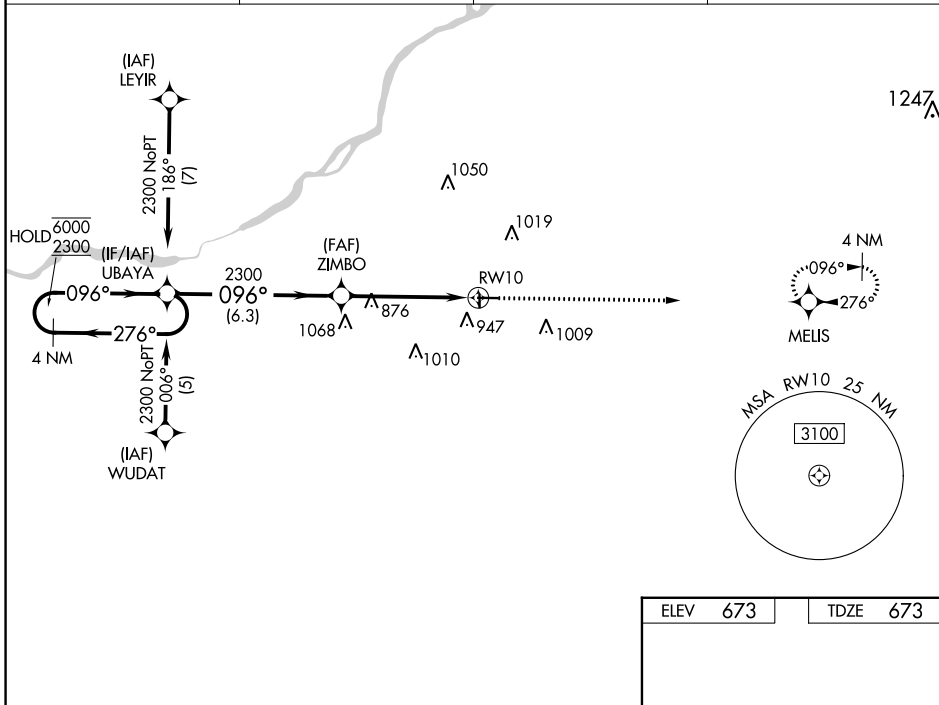
MISSED APPROACH:
Climb to 2300 direct
MELIS and hold.

AWOS-3
120.725

TOLEDO APP CON
126.1 317.55

CLNC DEL
125.6

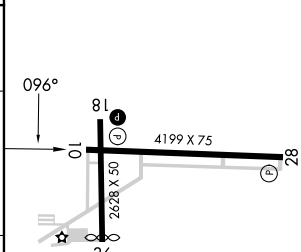
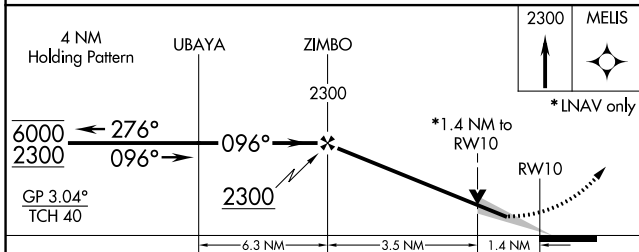
UNICOM
122.975 (CTAF)



EC-2, 05 SEP 2024 to 03 OCT 2024

EC-2, 05 SEP 2024 to 03 OCT 2024

| | | | |
|------|-----|------|-----|
| ELEV | 673 | TDZE | 673 |
|------|-----|------|-----|



| CATEGORY | A | B | C | D |
|----------|--------|-------------|-------------------------------|-------------------------------|
| LPV DA | 939-1 | | 266 (300-1) | |
| LNAV MDA | 1160-1 | 487 (500-1) | 1160-1 3/8 487 (500-1 3/8) | 1160-1 1/2 487 (500-1 1/2) |
| CIRCLING | 1300-1 | 627 (700-1) | 1320-1 3/4 647 (700-1 3/4) | 1320-2 647 (700-2) |

REIL Rwys 10, 18, and 28
MRL Rwys 10-28 and 18-36