

LOC I-ANB 111.5	APP CRS 052°	Rwy Idg 7000
		TDZE 595
		Apt Elev 612

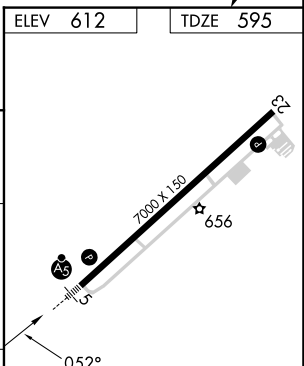
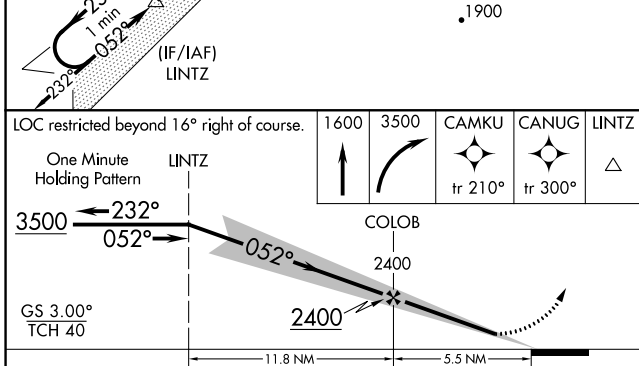
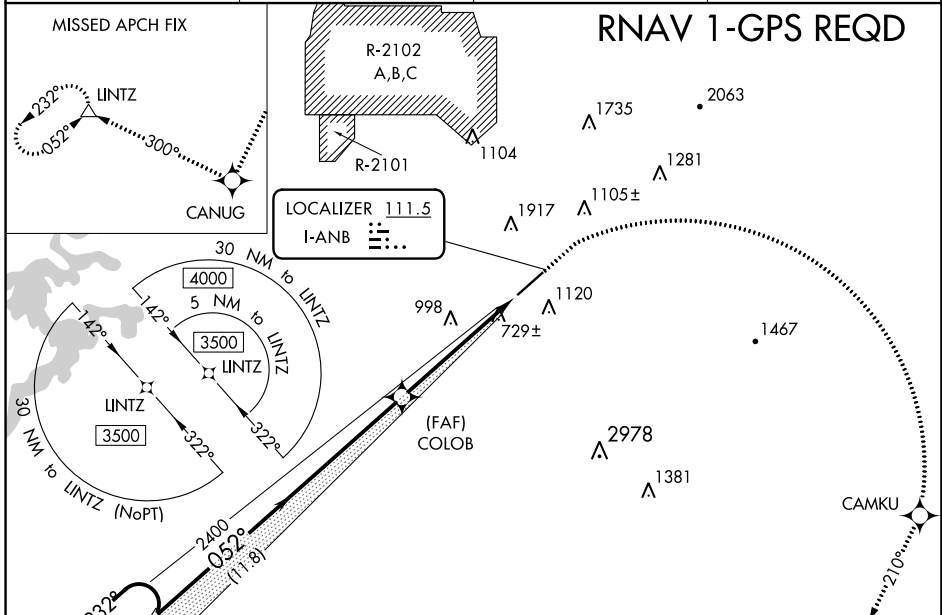
ILS Y or LOC Y RWY 5

ANNISTON RGNL (ANB)

⚠ Circling NA north of Rwy 5-23. RNAV 1-GPS required. For inop ALS, increase S-ILS 5 all Cats visibility to 1 SM. When local altimeter setting not received, use Gadsden altimeter setting: increase DA to 975 and all visibilities ¼ SM; increase all MDAs 80 feet, and S-LOC 5 Cat C/D, and Circling Cat C visibilities ½ SM. For inop ALS when using Gadsden altimeter setting: increase S-ILS 5 all Cats to 1 ¼ SM.

MALSR
 MISSED APPROACH: Climb to 1600 then climbing right turn to 3500 direct CAMKU then on track 210° to CANUG and on track 300° to LINTZ and hold.

ASOS 119.675	BIRMINGHAM APP CON 132.15 285.45	CTAF 123.60	UNICOM 123.0
------------------------	--	-----------------------	------------------------



CATEGORY	A	B	C	D
S-ILS 5	909-1/2 314 (300-1/2)			
S-LOC 5	1120-1/2	525 (600-1/2)	1120-1	525 (600-1)
CIRCLING	1420-1	808 (900-1)	1420-2 1/4 808 (900-2 1/4)	1820-3 1208 (1300-3)

REIL Rwy 23	
HIRL Rwy 5-23	
FAF to MAP 5.5 NM	
Knots	60 90 120 150 180
Min:Sec	5:30 3:40 2:45 2:12 1:50

SE-4, 05 SEP 2024 to 03 OCT 2024

SE-4, 05 SEP 2024 to 03 OCT 2024